

NTP Nonneoplastic Lesion Atlas

Stomach, Glandular Stomach – Foreign body

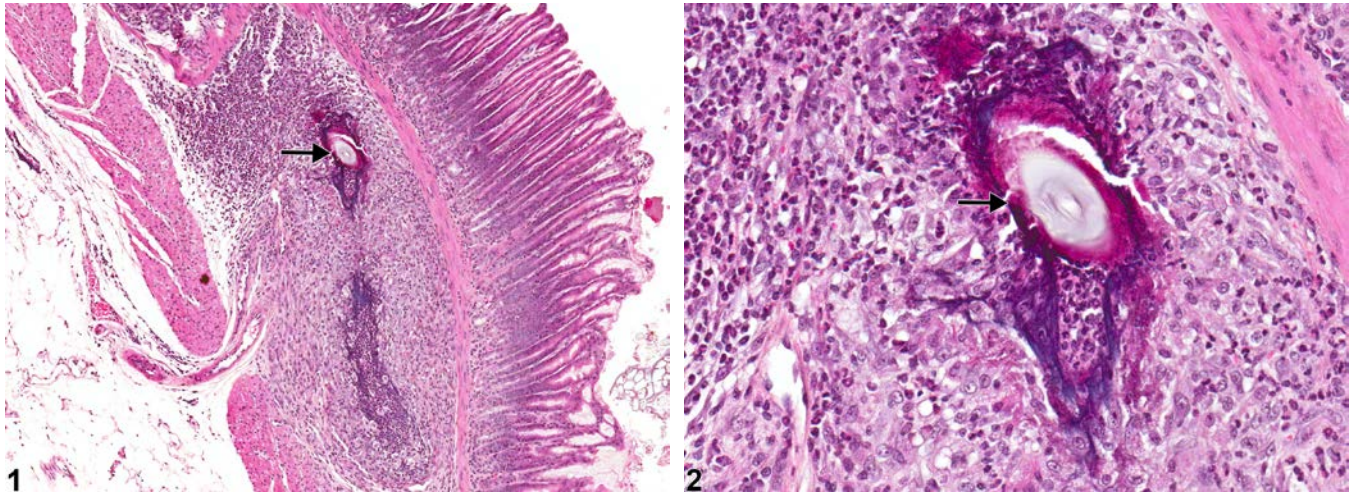


Figure Legend: **Figure 1** Stomach, Glandular stomach - Foreign body in a male B6C3F1 mouse from a chronic study. There is a foreign body (arrow) in the submucosa with secondary inflammation. **Figure 2** Stomach, Glandular stomach - Foreign body in a male B6C3F1 mouse from a chronic study (higher magnification of Figure 1). There is a foreign body (arrow) in the submucosa with secondary inflammation.

Comment: Hair (Figure 1 and Figure 2, arrows) or feed material can become embedded in the wall of the glandular stomach secondary to injury from a gavage procedure or ulceration from xenobiotics. The process of ulceration exposes the underlying propria and muscular wall to gastric contents and allows hair and food material to penetrate into the granulation tissue, which forms beneath the ulcer.

Recommendation: A primary foreign body should be diagnosed but not graded. If a foreign body causing a significant inflammatory response, then both the foreign body and inflammation are diagnosed. In the case illustrated above, both the foreign body (hair) and the inflammation (granulomatous) should be diagnosed. A foreign body such as hair or feed material that is passively adhered to an ulcerated surface should not be diagnosed separately; it can be described in the narrative.

References:

Brown HR, Hardisty JF. 1990. Oral cavity, esophagus and stomach. In: Pathology of the Fischer Rat (Boorman GA, Montgomery CA, MacKenzie WF, eds). Academic Press, San Diego, CA, 9-30.
Abstract: <http://www.ncbi.nlm.nih.gov/nlmcatalog/9002563>



NTP Nonneoplastic Lesion Atlas

Stomach, Glandular Stomach – Foreign body

References:

Deardorff TL, Kliks MM, Desowitz RS. 1983. Histopathology induced by larval *Terranova* (type HA) (Nematoda: Anisakinae) in experimentally infected rats. *J Parasitol* 69:191-195.

Abstract: <http://www.ncbi.nlm.nih.gov/pubmed/6827436>

Leininger JR, Jokinen MP, Dangler CA, Whiteley LO. 1999. Oral cavity, esophagus, and stomach. In: *Pathology of the Mouse* (Maronpot RR, ed). Cache River Press, St Louis, MO, 29-48.

Abstract: <http://www.cacheriverpress.com/books/pathmouse.htm>

Authors:

Linda H. Kooistra, DVM, PhD, DACVP
Pathologist
Charles River Laboratories, Inc.
Research Triangle Park, NC

Abraham Nyska, DVM, Diplomate ECVP, Fellow IATP
Expert in Toxicologic Pathology
Visiting Full Professor of Pathology
Sackler School of Medicine, Tel Aviv University
Timrat Israel