

NTP Nonneoplastic Lesion Atlas

Ovary, Epithelium – Hyperplasia

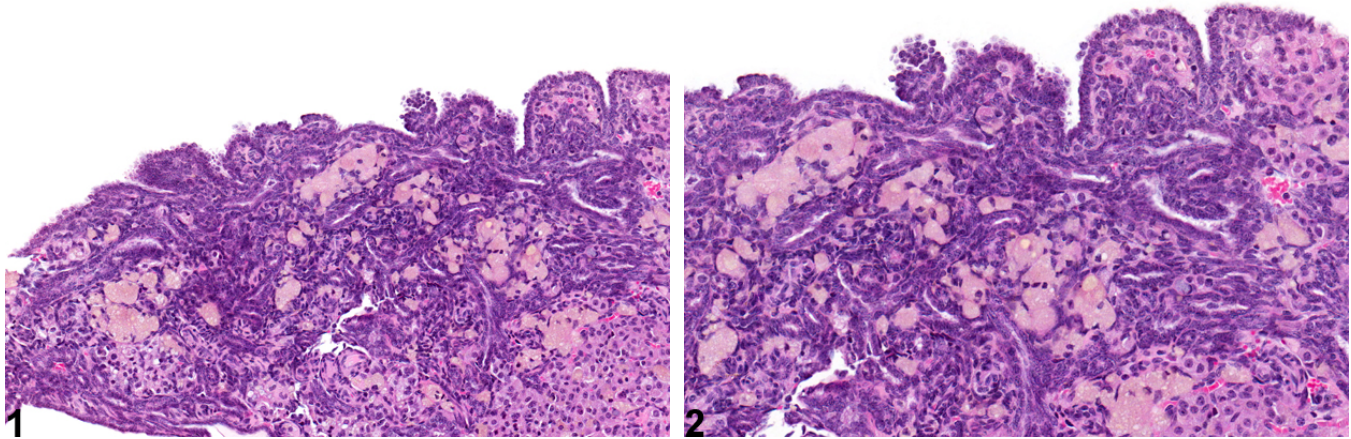


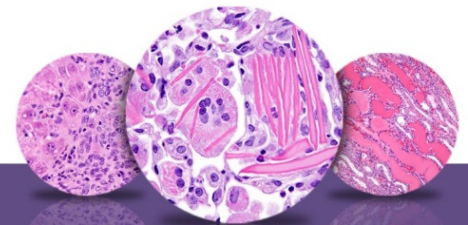
Figure Legend: **Figure 1** Ovary, Epithelium - Hyperplasia, in a female F344/N rat from a chronic study. There is proliferation of the surface epithelium of the ovary. **Figure 2** Ovary, Epithelium - Hyperplasia in a female F344/N rat from a chronic study (higher magnification of Figure 1). There is proliferation of the surface epithelium of the ovary.

Comment: Proliferation of the epithelium lining the surface of the ovary appears as small polypoid projections from the epithelial surface and as downgrowths of cords of cuboidal epithelial cells with basophilic cytoplasm (Figure 1 and Figure 2). Epithelial cell hyperplasia is thought to be derived from the mesothelium lining the ovarian surface. In the past, this has been referred to as germinal epithelium but the term “germinal epithelium” is misleading, because the epithelium covering the surface of the ovary is a continuation of the peritoneum. Epithelial cell hyperplasia must be distinguished from adenoma, cystadenoma, and tubulostromal neoplasms and from tubular (Sertoliform) hyperplasia, which consists of tubules lined by columnar cells with indistinct cytoplasmic borders and basal nuclei.

Recommendation: Ovary, Epithelium - Hyperplasia should always be diagnosed and given a severity grade.

References:

Alison RH, Morgan KT, Montgomery CA. 1990. Ovary. In: Pathology of the Fischer Rat: Reference and Atlas (Boorman GA, Eustis SL, Elwell MR, Montgomery CA, MacKenzie WF, eds). Academic Press, San Diego, CA, 429-442.



NTP Nonneoplastic Lesion Atlas

Ovary, Epithelium – Hyperplasia

References:

Davis BJ, Dixon D, Herbert RA. 1999. Ovary, oviduct, uterus, cervix and vagina. In: Pathology of the Mouse: Reference and Atlas (Maronpot RR, Boorman GA, Gaul BW, eds). Cache River Press, Vienna, IL, 409-444.

Lewis DJ, Gopinath C. 1998. The female reproductive system. In: Target Organ Pathology: A Basic Text (Turton T, Hooson J, eds). Taylor and Francis, London, 407-428.

Maekawa A, Maita K, Harleman JH. 1996. Changes in the ovary. In: Pathobiology of the Aging Mouse (Mohr U, Dungworth DL, Capen CC, Carlton WW, Sundberg JP, Ward JM, eds). ILSI Press, Washington, DC, 451-467.

Montgomery CA, Alison RH. 1987. Non-neoplastic lesions of the ovary in Fischer 344 rats and B6C3F1 mice. Environ Health Perspect 73:53-75.

Abstract: <http://www.ncbi.nlm.nih.gov/pmc/articles/PMC1474552/>

National Toxicology Program. 1989. NTP TR-362. Toxicology and Carcinogenesis Studies of 4-Vinyl-1-cyclohexene Diepoxide (CAS No. 106-87-6) in F344/N Rats and B6C3F₁ Mice (Dermal Studies). NTP, Research Triangle Park, NC.

Abstract: <http://ntp.niehs.nih.gov/go/6985>

National Toxicology Program. 1993. NTP TR-434. Toxicology and Carcinogenesis Studies of 1,3-Butadiene (CAS No. 106-99-0) in B6C3F₁ Mice (Inhalation Studies). NTP, Research Triangle Park, NC.

Abstract: <http://ntp.niehs.nih.gov/go/6012>

Peluso JJ, Gordon LR. 1992. Nonneoplastic and neoplastic changes in the ovary. In: Pathobiology of the Aging Rat (Mohr U, Dungworth DL, Capen CC, eds). ILSI Press, Washington, DC, 351-364.

Young B. 2014. Female reproductive system. In: Wheater's Functional Histology: A Text and Colour Atlas. (Young B, Woodford P, O'David G, eds). Elsevier, Philadelphia, PA, 351-382.

Authors:

Gabrielle Willson, BVMS, DipRCPath, FRCPath, MRCVS
Senior Pathologist
Experimental Pathology Laboratories, Inc.
Research Triangle Park, NC

Karen Y. Cimon, DVM, MS
Senior Pathologist
Experimental Pathology Laboratories, Inc.
Research Triangle Park, NC