



NTP Nonneoplastic Lesion Atlas

Lymph Node – Erythrophagocytosis

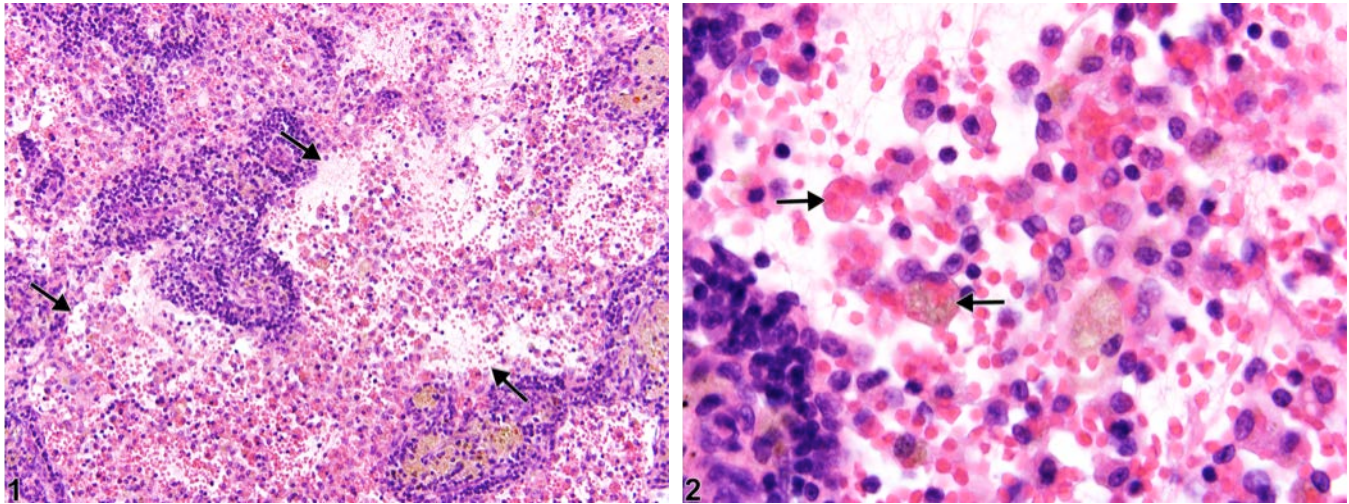


Figure Legend: **Figure 1** Lymph node - Erythrophagocytosis in a female F344/N rat from a chronic study. Numerous macrophages with intracytoplasmic erythrocytes (arrows) and extravasated erythrocytes fill the medullary sinus of this lymph node. **Figure 2** Lymph node - Erythrophagocytosis in a female F344/N rat from a chronic study (higher magnification of Figure 1). Macrophages within the medullary sinus contain variable numbers of erythrocytes and/or pigment within their cytoplasm (arrows).

Comment: Erythrophagocytosis in lymph nodes consists of macrophages within sinuses that phagocytize extravasated, old, and/or damaged erythrocytes (Figure 1 and Figure 2, arrows). Erythrophagocytosis does not occur under normal conditions and is most often associated with lymph node hemorrhage, congestion, sinus erythrocytosis, and autoimmune and other immunopathologic conditions.

Recommendation: When erythrophagocytosis is present within lymph nodes, it should be diagnosed and graded.



NTP Nonneoplastic Lesion Atlas

Lymph Node – Erythrophagocytosis

References:

Frith CH, Ward JM, Chandra M, Losco PE. 2000. Non-proliferative lesions of the hematopoietic system in rats. In: Guides for Toxicologic Pathology. STP/ARP/AFIP, Washington, DC.
Full Text: <https://www.toxpath.org/ssdnc/HematopoieticNonprolifRat.pdf>

National Toxicology Program. 2011. NTP TR-561. Toxicology and Carcinogenesis Studies of Tetralin (CAS No. 119-64-2) in F344/N Rats and B6C3F1 Mice (Inhalation Studies). NTP, Research Triangle Park, NC.

Abstract: <http://ntp.niehs.nih.gov/go/33575>

Authors:

Kristen Hobbie, DVM, PhD
Principal Pathologist
Huntingdon Life Sciences
Peterborough, UK

Susan A. Elmore, MS, DVM, DACVP, DABT, FIATP
Staff Scientist, NTP Pathologist
NTP Pathology Group
National Toxicology Program
National Institute of Environmental Health Sciences
Research Triangle Park, NC

Holly M. Kolenda-Roberts, DVM, PhD, DACVP
Veterinary Pathologist
SNBL USA
Everett, WA