



NTP Nonneoplastic Lesion Atlas

Lymph Node – Hyperplasia, Plasma Cell

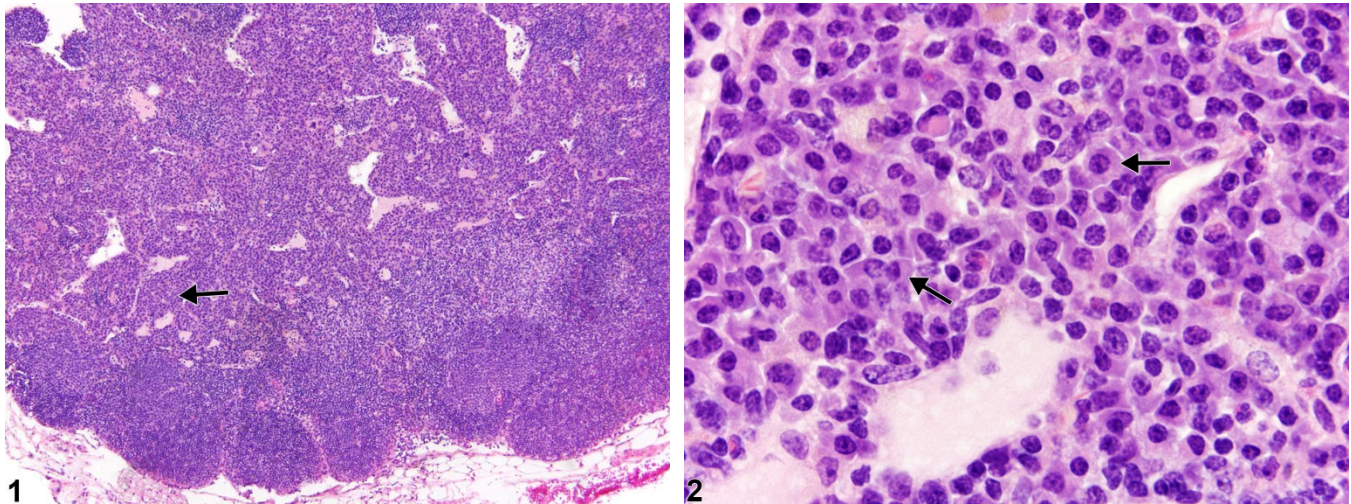


Figure Legend: **Figure 1** Lymph node - Hyperplasia, Plasma cell in a control female B6C3F1/N mouse from a chronic study. The medullary cords are markedly expanded by increased numbers of plasma cells (arrow). **Figure 2** Lymph node - Hyperplasia, Plasma cell in a control female B6C3F1/N mouse from a chronic study (higher magnification of Figure 1). Plasma cells (arrows) are present within the medullary cords.

Comment: Plasma cell hyperplasia is a common finding in the lymph nodes of rodents, particularly in the mandibular lymph nodes (Figure 1 and Figure 2), most often in response to exposure to dietary antigens. If not a background lesion, then plasma cell hyperplasia may be treatment related or associated with inflammatory, infectious, or neoplastic lesions in other organs. Plasma cells and their precursors are normally present in the medullary cords; therefore, these cords are the primary site of plasma cell hyperplasia (Figure 1). Plasma cells usually increase in response to antigenic stimulation requiring antibody production, so typically B-cell (lymphoid) hyperplasia is accompanied by plasma cell hyperplasia. Myeloid hyperplasia may also be present. Mature plasma cells have basophilic to eosinophilic cytoplasm, eccentrically located nuclei, a Golgi clear zone, and a cartwheel chromatin pattern (Figure 2, arrows). Depending on the degree and chronicity of antigenic stimulation, some Mott cells with Russell bodies may be present. With marked plasma cell hyperplasia, the lymph node may be greatly enlarged and composed mostly of plasma cells and may exhibit partial effacement of normal nodal architecture. Marked plasma cell hyperplasia may be differentiated from plasma cell neoplasia by



NTP Nonneoplastic Lesion Atlas

Lymph Node – Hyperplasia, Plasma Cell

the presence of plasma cell precursors, atypical plasma cells, capsular infiltration, and metastases in the latter.

Recommendation: Plasma cell hyperplasia in lymph nodes should be diagnosed and given a severity grade. However, if this lesion accompanies lymphocyte hyperplasia and/or neoplasia, it should not be diagnosed separately but should be described in the narrative.

References:

Elmore SA. 2006. Enhanced histopathology of the lymph nodes. *Toxicol Pathol* 34:634-647.

Abstract: <http://www.ncbi.nlm.nih.gov/pmc/articles/PMC1783683/>

Elmore SA. 2006. Histopathology of the lymph nodes. *Toxicol Pathol* 34:425-454.

Full Text: <http://www.ncbi.nlm.nih.gov/pmc/articles/PMC1892634/>

Frith CH, Ward JM, Chandra M, Losco PE. 2000. Non-proliferative lesions of the hematopoietic system in rats. In: *Guides for Toxicologic Pathology*. STP/ARP/AFIP, Washington, DC.

Full Text: <https://www.toxpath.org/ssdnc/HematopoieticNonprolifRat.pdf>

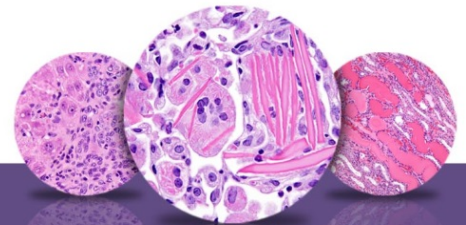
National Toxicology Program. 2004. NTP TR-511. Toxicology and Carcinogenesis Studies of Dipropylene Glycol (CAS No. 25265-71-8) in F344/N Rats and B6C3F1 Mice (Drinking Water Studies). NTP, Research Triangle Park, NC.

Abstract: <http://ntp.niehs.nih.gov/go/14900>

Ward JM, Mann PC, Morishima H, Frith CH. 1999. Thymus, spleen, and lymph nodes. In: *Pathology of the Mouse* (Maronpot RR, ed). Cache River Press, Vienna, IL, 333-360.

Ward JM, Rehg JE, Morse HC III. 2012. Differentiation of rodent immune and hematopoietic system reactive lesions from neoplasia. *Toxicol Pathol* 40:425-434.

Abstract: <http://www.ncbi.nlm.nih.gov/pubmed/22215512>



NTP Nonneoplastic Lesion Atlas

Lymph Node – Hyperplasia, Plasma Cell

Authors:

Kristen Hobbie, DVM, PhD
Principal Pathologist
Huntingdon Life Sciences
Peterborough, UK

Susan A. Elmore, MS, DVM, DACVP, DABT, FIATP
Staff Scientist, NTP Pathologist
NTP Pathology Group
National Toxicology Program
National Institute of Environmental Health Sciences
Research Triangle Park, NC

Holly M. Kolenda-Roberts, DVM, PhD, DACVP
Veterinary Pathologist
SNBL USA
Everett, WA