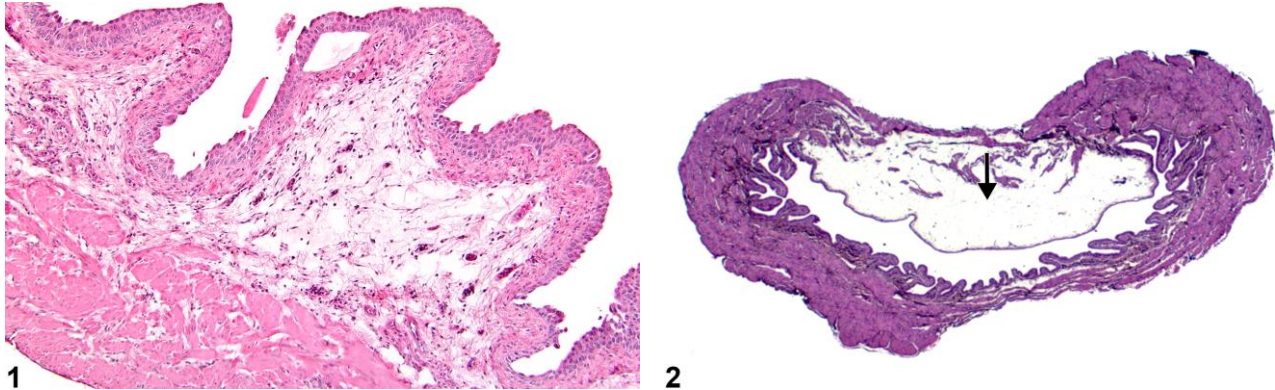


# NTP Nonneoplastic Lesion Atlas

## Urinary bladder – Edema



**Figure Legend:** **Figure 1** A focal area of edema in the urinary bladder submucosa in a female B6C3F1 mouse from a chronic study. **Figure 2** Artifactual edema-like change (arrow) from inflation of the bladder with fixative in a female F344/N rat from an acute study.

**Comment:** Edema is usually seen with other lesions, particularly inflammation, and is typically noted as an amorphous, slightly eosinophilic fluid in the subepithelial connective tissue (Figure 1). Edema has to be differentiated from artifacts produced by inflation of the urinary bladder with fixative solutions (Figure 2).

**Recommendation:** Since some edema is seen with inflammatory and/or vascular lesions, edema should not be diagnosed unless it is a major component of the lesion.

### Reference:

Hard GC, Alden CL, Bruner RH, Frith CH, Lewis RM, Owen RA, Krieg K, Durchfeld-Meyer B. 1999. Non-proliferative lesions of the kidney and lower urinary tract in rats. In: Guides for Toxicologic Pathology. STP/ARP/AFIP, Washington, DC, 1–32.

Full-Text: <http://www.toxpath.org/ssdnc/KidneyBladderNonprolifRat.pdf>



# NTP Nonneoplastic Lesion Atlas

## *Urinary bladder – Edema*

### **Authors:**

John Curtis Seely, DVM, DACVP  
Senior Pathologist  
Experimental Pathology Laboratories, Inc.  
Research Triangle Park, NC

Abraham Nyska, DVM, Diplomate ECVF, Fellow IATP  
Expert in Toxicologic Pathology  
Visiting Full Professor of Pathology  
Sackler School of Medicine, Tel Aviv University  
Timrat Israel