

Appendix B2

BG1Luc ER TA – Antagonist Protocol

This page intentionally left blank

**BG1Luc ER TA TEST METHOD
ANTAGONIST PROTOCOL**

**National Toxicology Program (NTP) Interagency Center for the Evaluation of
Alternative Toxicological Methods (NICEATM)**

List of Acronyms and Abbreviations

13 mm test tube	13 x 100 mm glass test tubes
DMEM	Dulbecco's Modification of Eagle's Medium
DMSO	Dimethyl Sulfoxide
DMSO Control	1% v/v dilution of DMSO in tissue culture media used as a vehicle control
E2	17 β -estradiol
E2 Control	2.5 x 10 ⁻⁵ μ g/mL E2 used as a control.
IC ₅₀ Value	Concentration that produces a half-maximal response as calculated using the four parameter Hill function.
ER	Estrogen Receptor
Estrogen-free DMEM	DMEM (phenol red free), supplemented with 1 % Penicillin/Streptomycin, 2 % L-Glutamine, and 5% Charcoal-dextran treated FBS
FBS	Fetal Bovine Serum
TAM/E2 Control	1.26 μ g/mL tamoxifen + 2.5 x 10 ⁻⁵ μ g/mL E2, used as a weak positive control.
G418	Gentamycin
Ral/E2 Reference Standard	Nine point dilution of raloxifene HCl + 2.5 x 10 ⁻⁵ 17 β -estradiol reference standard for the BG1Luc ER TA antagonist assay
RPMI	RPMI 1640 growth medium
TA	Transcriptional Activation
T25	25 cm ² tissue culture flask
T75	75 cm ² tissue culture flask
T150	150 cm ² tissue culture flask

1.0 Purpose

This protocol is designed to evaluate coded test substances for potential estrogen receptor (ER) antagonist activity using the BG1Luc ER TA test method.

2.0 Sponsor

(As Appropriate)

3.0 Definitions

- **Dosing Solution:** The test substance, control substance, or reference standard solution which is to be placed into the tissue culture wells for experimentation.
- **Raw Data:** Raw data includes information that has been collected but not formatted or analyzed, and consists of the following:
 - Data recorded in the Study Notebook
 - Computer printout of initial luminometer data
 - Other data collected as part of GLP compliance, e.g.:
 - Equipment logs and calibration records
 - Test substance and tissue culture media preparation logs
 - Cryogenic freezer inventory logs
- **Soluble:** Test substance exists in a clear solution without visible cloudiness or precipitate.
- **Study Notebook:** The study notebook contains recordings of all activities related to the conduct of the BG1Luc ER TA TA antagonist test method.
- **Test Substances:** Substances supplied to the testing laboratories that are coded and distributed such that only the Project Officer, Study Management Team (SMT), and the Substance Inventory and Distribution Management have knowledge of their true identity. The test substances will be purchased, aliquoted, coded, and distributed by the Supplier under the guidance of the NIEHS/NTP Project Officer and the SMT.

4.0 Testing Facility and Key Personnel

4.1 Testing Facility

(As Appropriate)

4.2 Key Personnel

- Study Director: (As Appropriate)
- Quality Assurance Director: (As Appropriate)

5.0 Identification of Reference Standard and Control Substances

5.1 Controls

Controls for the ER antagonist protocol are as follows:

Vehicle control (dimethyl sulfoxide [DMSO]): 1% v/v dilution of DMSO (CASRN 67-68-5) diluted in tissue culture media

E2 control: 17 β -estradiol, 2.5 x 10⁻⁵ μ g/mL E2 in tissue culture media used as a base line negative control

TAM/E2 Control: Tamoxifen (TAM), CASRN 10540-29-1, 1.26 µg/mL, with 2.5×10^{-5} µg/mL E2 in tissue culture media used as a weak positive control

5.2 Reference Standard

Ral/E2 reference standard for range finder testing: Three concentrations (1.56×10^{-3} , 3.91×10^{-4} , and 9.77×10^{-5} µg/mL) of raloxifene HCl (Ral), CASRN 84449-90-1, plus a fixed concentration (2.5×10^{-5} µg/mL) of 17β-estradiol (E2), CASRN: 50-28-2, in duplicate wells.

Ral/E2 reference standard for comprehensive testing: A serial dilution of Ral plus a fixed concentration (2.5×10^{-5} µg/mL) of E2 consisting of nine concentrations of Ral/E2 in duplicate wells.

6.0 Overview of General Procedures for Antagonist Testing

All experimental procedures are to be carried out under aseptic conditions and all solutions, glassware, plastic ware, pipettes, etc., shall be sterile. All methods and procedures shall be documented in the study notebook.

Antagonist range finder testing is conducted on 96-well plates using three concentrations of Ral/E2 (1.56×10^{-3} , 3.91×10^{-4} , and 9.77×10^{-5} µg/mL Ral) with 2.50×10^{-5} µg/mL E2 in duplicate as the reference standard, with three replicate wells for the E2 and DMSO controls.

Comprehensive testing is conducted on 96-well plates using nine concentrations of Ral/E2 in duplicate as the reference standard (**Table 6-1**). Four replicate wells for the DMSO control, TAM/E2 and E2 controls are included on each plate.

Table 6-1 Concentrations of Ral/E2 Reference Standard Used for Comprehensive Testing

Raloxifene Concentrations ¹	E2 Concentrations
1.25×10^{-2}	2.5×10^{-5}
6.25×10^{-3}	2.5×10^{-5}
3.13×10^{-3}	2.5×10^{-5}
1.56×10^{-3}	2.5×10^{-5}
7.81×10^{-4}	2.5×10^{-5}
3.91×10^{-4}	2.5×10^{-5}
1.95×10^{-4}	2.5×10^{-5}
9.77×10^{-5}	2.5×10^{-5}
4.88×10^{-5}	2.5×10^{-5}

¹ Concentrations are presented in µg/mL.

Visual observations for cell viability are conducted for all experimental plates just prior to luminescence measurements, as outlined in **Section 11.4**.

Luminescence data, measured in relative light units (RLUs), is corrected for background luminescence by subtracting the mean RLU value of the vehicle control (DMSO) wells from the RLU measurements for each of the other wells of the 96-well plate. Data is then transferred into Excel[®] data management spreadsheets and GraphPad PRISM[®] statistical software, graphed, and evaluated for a positive or negative response as follows:

- A response is considered positive for antagonist activity when the average adjusted RLU for a given concentration is less than the mean RLU value minus three times the standard deviation for the E2 control.

- Any luminescence at or above this threshold is considered a negative response.

For substances that are positive at one or more concentrations, the concentration of test substance that causes a half-maximal response (the relative IC₅₀) is calculated using a Hill function analysis. The Hill function is a four-parameter logistic mathematical model relating the substance concentration to the response (typically following a sigmoidal curve) using the equation below

$$Y = \text{Bottom} + \frac{\text{Top} - \text{Bottom}}{1 + 10^{(\log \text{IC}_{50} - X) \text{HillSlope}}}$$

where Y = response (i.e., relative light units); X = the logarithm of concentration; Bottom = the minimum response; Top = the maximum response; log IC₅₀ = the logarithm of X as the response midway between Top and Bottom; and HillSlope describes the steepness of the curve. The model calculates the best fit for the Top, Bottom, HillSlope, and IC₅₀ parameters. See **Section 13.6.5** for more details.

Acceptance or rejection of a test is based on evaluation of reference standard and control results from each experiment conducted on a 96-well plate. Results for these controls are compared to historical results compiled in the historical database, as seen in **Section 16.0**.

6.1 Range Finder Testing

Antagonist range finding for coded substances consists of a seven-point 1:10 serial dilution using duplicate wells per concentration. Concentrations for comprehensive testing are selected based on the response observed in range finder testing. If necessary, a second range finder test can be conducted to clarify the optimal concentration range to test (see **Section 14.0**).

6.2 Comprehensive Testing

Comprehensive antagonist testing for coded substances consists of 11-point serial dilutions, with each concentration tested in triplicate wells of the 96-well plate. Three separate experiments are conducted for comprehensive testing on three separate days, except during Phases III and IV of the validation effort, in which comprehensive testing experiments are conducted once (see **Section 15.0**).

7.0 Materials for BG1Luc ER TA Antagonist Testing

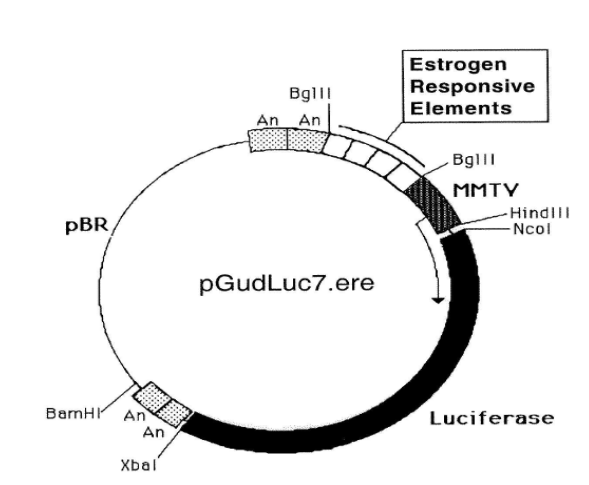
This section provides the materials needed to conduct BG1Luc ER TA testing, with associated brand names/vendors¹ in brackets.

7.1 BG1Luc4E2 Cells

Human ovarian cancer cell line stably transfected with a plasmid containing an estrogen response element (**Figure 7-1**). The BG1Luc4E2 cell line is available upon request from the University of California, Davis, California, USA, and is also available from Xenobiotic Detection Systems Inc., Durham, North Carolina, USA.

¹ Brand names and vendors should not be considered an endorsement by the U.S. Government or any member of the U.S. Government; such information is provided as an example.

Figure 7-1 pGudLuc7.ERE Plasmid



7.2 Technical Equipment:

All technical equipment may be obtained from Fisher Scientific International, Inc. (Liberty Lane Hampton, NH, USA 03842). Equivalent technical equipment from another commercial source can be used.

- Analytical balance (Cat. No. 01-910-320)
- Berthold Orion 1 Microplate Luminometer [Berthold CatNo.: Orion 1 MPL3] or equivalent and dedicated computer
- Biological safety hood, class II, and stand (Cat. No. 16-108-99)
- Centrifuge (low speed, tabletop with swinging bucket rotor) (Cat. No. 04-978-50 centrifuge, and 05-103B rotor)
- Combustion test kit (CO₂ monitoring) (Cat. No. 10-884-1)
- Drummond diaphragm pipetter (Cat. No. 13-681-15)
- Freezers, -20°C (Cat. No. 13-986-150), and -70°C (Cat. No. 13-990-86)
- Hand tally counter (Cat. No. 07905-6)
- Hemocytometer, cell counter (Cat. No. 02-671-5)
- Light microscope, inverted (Cat. No. 12-561-INV)
- Light microscope, upright (Cat. No. 12-561-3M)
- Liquid nitrogen flask (Cat. No. 11-675-92)
- Micropipetter, repeating (Cat. No. 21-380-9)
- Pipettors, air displacement, single channel (0.5 –10µL (Cat. No. 21-377-191), 2 –20 µL (Cat. No. 21-377-287), 20 – 200µL (Cat. No. 21-377-298), 200 - 1000µL (Cat. No. 21-377-195))
- Refrigerator/freezer (Cat. No. 13-986-106A)
- Shaker for 96-well plates (Cat. No. 14-271-9)
- Sodium hydroxide (Cat. No. 5318-500)
- Sonicating water bath (Cat. No. 15-335-30)
- Tissue culture incubator with CO₂ and temperature control (Cat. No. 11-689-4)
- Vacuum pump with liquid trap (side arm Erlenmeyer) (Cat. No. 01-092-29)
- Vortex mixer (Cat. No. 12-814)

Equipment should be maintained and calibrated as per GLP guidelines and individual laboratory SOPs.

7.3 Reference Standard, Controls, and Tissue Culture Supplies

All tissue culture reagents must be labeled to indicate source, identity, storage conditions and expiration dates. Tissue culture solutions must be labeled to indicate concentration, stability (where known), and preparation and expiration dates.

Equivalent tissue culture media and sera from another commercial source can be used, but must first be tested as described in **Section 17.0** to determine suitability for use in this test method.

The following are the necessary tissue culture reagents and possible sources based on their use in the pre-validation studies:

- BackSeal-96/384, white adhesive bottom seal for 96-well and 384-well microplate [Perkin-Elmer, Cat. No. 6005199]
- 17 β -estradiol (CAS RN: 50-28-2) [Sigma-Aldrich, Cat. No. E8875]
- CellTiter-Glo[®] Luminescent Cell Viability Assay [Promega Cat. No. G7572]
- Cryovial, 2 mL (Corning Costar) [Fisher Scientific Cat. No. 03-374-21]
- Culture tube 13 x 100mm (case) [Thomas Scientific Cat. No.: 10009186R38]²
- Culture tube, 50 mL conical (Corning Costar) [Fisher Scientific Cat. No. 05-526C]
- DMSO, U.S.P. analytical grade. [Sigma-Aldrich, Cat. No. 34869-100ML]
- Dulbecco's Modification of Eagle's Medium (DMEM), containing 4.5 g/L glucose, with sodium pyruvate, without phenol red or L-glutamine [Mediatech/Cellgro, Cat. No. 17-205-CV]
- Fetal Bovine Serum [Mediatech/Cellgro Cat. No. MT 35-010-CV]
- Fetal Bovine Serum, charcoal/dextran treated, triple 0.1 μ m sterile filtered [Hyclone, Cat. No. SH30068.03]
- Tamoxifen (CASRN: 10540-29-1) [Sigma-Aldrich, Cat. No. T5648]
- Gentamycin Sulfate (G418), 50 mg/mL [Mediatech/Cellgro Cat. No. 30-234-CR]
- L-glutamine, 29.2 mg/mL [Cellgro, Cat. No. 25005-CI]
- Luciferase Assay System (10-Pack) [Promega Cat. No. E1501]
- Lysis Solution 5X [Promega, Cat. No. E1531]
- Penicillin/streptomycin solution, 5000 I.U. penicillin, 5000 μ g/mL streptomycin [Cellgro, Cat. No. 30-001-CI].
- Phosphate buffered saline (PBS, 1X) without calcium and magnesium [Cellgro, Cat. No. 21-040-CV]
- Pipettes, serological: 2.0 mL [Sigma-Aldrich, Cat. No. P1736], 5.0 mL [Sigma-Aldrich, Cat. No. P1986], 25 mL [Sigma-Aldrich, Cat. No. P2486]
- Raloxifene (CASRN 84449-90-1) [Sigma-Aldrich Cat. No. R1402]
- RPMI 1640 medium, containing L-glutamine [Mediatech, Cat. No. 10-040-CV]
- Tissue culture flasks (Corning-Costar): 25 cm² (T25) [Fisher Cat. No. 10-126-28]; 75 cm² (T75) [Fisher Cat. No. 10-126-37]; and 150 cm² (T150) [Fisher Cat. No. 10-126-34]
- Tissue culture plates (Corning-Costar): 96-well [Thomas Scientific Cat. No. 6916A05]
- Trypsin (10X), 2.5% in Hank's balanced salt solution (HBSS), without calcium and magnesium, without phenol red [Cellgro, Cat. No. 25-054-CI].

All reagent lot numbers and expiration dates must be recorded in the study notebook.

8.0 Preparation of Tissue Culture Media and Solutions

All tissue culture media and media supplements must be quality tested before use in experiments (see **Section 15.0**).

² If glass tubes cannot be obtained from Thomas Scientific, the preference is for flint glass, then lime glass, then borosilicate glass.

8.1 RPMI 1640 Growth Medium (RPMI)

RPMI 1640 is supplemented with 0.9% Pen-Strep and 8.0% FBS to make RPMI growth medium (RPMI).

Procedure for one 549 mL bottle:

1. Remove FBS from -70°C freezer, and Pen-Strep from -20°C freezer and allow to equilibrate to room temperature.
2. Add 44 mL of FBS and 5 mL Pen-Strep to the bottle of RPMI 1640.
3. Label RPMI bottle as indicated in **Section 7.3**

Store at 2-8 °C for no longer than six months or until the shortest expiration date of any media component.

8.2 Estrogen-Free DMEM Medium

DMEM is supplemented to contain 4.5% charcoal/dextran treated FBS, 1.9% L-glutamine, 0.9% Pen-Strep.

Procedure for one 539 mL bottle:

1. Remove charcoal/dextran treated FBS from -70°C freezer, and L-glutamine and Pen-Strep from -20°C freezer and allow to equilibrate to room temperature.
2. Add 24 mL of charcoal/dextran treated FBS, 10 mL L-glutamine, and 5 mL Pen-Strep to one 500 mL bottle of DMEM.
3. Label estrogen-free DMEM bottle as indicated in **Section 7.3**

Store at 2-8 °C for no longer than six months or until the shortest expiration date of any media component.

8.3 1X Trypsin Solution

1X Trypsin solution is prepared by dilution from a 10X premixed stock solution. The 10X stock solution should be stored in 10 mL aliquots in a -20°C freezer.

Procedure for making 100 mL of 1X trypsin:

1. Remove a 10mL aliquot of 10X trypsin from -20°C freezer and allow to equilibrate to room temperature.
2. Aliquot 1 mL Trypsin (10X) along with 9 mL of 1X PBS into ten 15 mL centrifuge tubes.
3. Label 1X trypsin aliquots as indicated in **Section 7.3**

1X Trypsin should be stored at -20°C.

8.4 1X Lysis Solution

Lysis solution is prepared by dilution from a 5X premixed stock solution. Both the 5X and 1X solutions can be repeatedly freeze-thawed.

The procedure for making 10 mL of 1X lysis solution:

1. Thaw the 5X Promega Lysis solution and allow it to reach room temperature.
2. Remove 2 mL of 5X solution and place it in a 15 mL conical centrifuge tube.
3. Add 8 mL of distilled, de-ionized water to the conical tube.

4. Cap and shake gently until solutions are mixed.

Store at -20°C for no longer than 1 year from receipt.

8.5 Reconstituted Luciferase Reagent

Luciferase reagent consists of two components, luciferase buffer and lyophilized luciferase substrate.

For long-term storage, unopened containers of the luciferase buffer and lyophilized luciferase substrate can be stored at -70°C for up to six months.

To reconstitute luciferase reagent:

1. Remove luciferase buffer and luciferase substrate from -70°C freezer and allow them to equilibrate to room temperature.
2. Add 10 mL of luciferase buffer solution to luciferase substrate container and swirl or vortex to mix, the luciferase substrate should readily go into solution.
3. Luciferase substrate should readily go into solution.
4. After solutions are mixed aliquot to a 15mL centrifuge tube.
5. Store complete solution at -20°C .

Reconstituted luciferase reagent is stable for 1 month at -20°C .

9.0 Overview of Propagation and Experimental Plating of BG1Luc4E2 Cells

BG1Luc4E2 cells are based on a continuous ovarian carcinoma cell line (BG-1 cells) that endogenously express ER α and ER β and have been stably transfected with an ER responsive reporter gene (*luc*). Although the cell line has proved to be stable over long-term passage *in vitro*, careful handling and the use of quality cell culture materials is required to maintain the stability and integrity of the cell line. Procedures specified in the Guidance on Good Cell Culture Practice (Coecke 2005) should be followed to assure the quality of all materials and methods in order to maintain the integrity, validity, and reproducibility of any work conducted.

BG1Luc4E2 cells are stored in liquid nitrogen in 2 mL cryovials. BG-1 cells are grown as a monolayer in tissue culture flasks in a dedicated tissue culture incubator at $37^{\circ}\text{C} \pm 1^{\circ}\text{C}$, $90\% \pm 5\%$ humidity, and $5.0\% \pm 1\%$ CO₂/air. The cells should be examined on a daily basis during working days under an inverted phase contrast microscope, and any changes in morphology and adhesive properties must be noted in the study notebook.

Two T150 flasks containing cells at 80% to 90% confluence will usually yield a sufficient number of cells to fill three 96-well plates for use in experiments.

9.1 Procedures for Thawing Cells and Establishing Tissue Cultures

Warm all tissue culture media and solutions to room temperature by placing them under the tissue culture hood several hours before use.

All tissue culture media, media supplements, and tissue culture plasticware must be quality tested before use in experiments (**Section 17.0**).

9.1.1 Thawing Cells

1. Remove a cryovial of frozen BG-1 cells from the liquid nitrogen flask.
2. Facilitate rapid thawing by loosening the top slightly (do not remove top) to release trapped gasses and retightening it. Roll vial between palms.

3. Use a micropipette to transfer cells to a 50 mL conical centrifuge tube.
4. Rinse cryovial twice with 1X PBS and add PBS rinse material to the conical tube.
5. Add 20 mL of RPMI to the conical tube.
6. Centrifuge at 1000 x g for eight min. If a pellet of cells has not formed, centrifuge for an additional 5 minutes.
7. Aspirate media from pellet and re-suspend it in 5 mL RPMI, drawing the pellet repeatedly through a 1.0 mL serological pipette to break up any clumps of cells.
8. Transfer cells to a T25 flask, place them in an incubator (see conditions in **Section 9.0**) and grow to 80% to 90% confluence (approximately 48 to 72 hrs).

9.1.2 Establishing Tissue Cultures

Once cells have reached 80% to 90% confluence, transfer the cells to a T75 flask by performing, for example, the following steps:

1. Remove the T25 flask from the incubator.
2. Aspirate the RPMI, then add 5 mL 1X PBS, making sure that the cells are coated with PBS.
3. Aspirate 1X PBS, then add 1 to 2 mL 1X trypsin to the T25 flask, gently swirling the flask to coat all cells with the trypsin.
4. Place the flask in an incubator (see conditions in **Section 9.0**) for 5 to 10 min.
5. Detach cells by hitting the side of the flask sharply against the palm or heel of the hand.
6. Confirm cell detachment by examination under an inverted microscope. If cells have not detached, return the flask to the incubator for an additional 2 minutes, then hit the flask again.
7. After cells have detached, add 5 mL PBS, and transfer the suspended cells to a 50 mL centrifuge tube. Wash the flask one additional time with 5 mL PBS.
8. Immediately add 20 mL RPMI to the conical tube to inhibit further cellular digestion by residual trypsin.
9. Pellet the cells by centrifugation, as described in **Section 9.1.1**, and re-suspend the cells in 10 mL RPMI medium.
10. Draw the pellet repeatedly through a 25 mL serological pipette to break up clumps of cells
11. Transfer cells to a T75 flask, then place the flask in an incubator (see conditions in **Section 9.0**) and grow to 80% to 90% confluence (approximately 48 to 72 hrs).

When cells have reached 80% to 90% confluency, transfer them into a T150 flask by performing, for example, the following steps:

12. Remove the T75 flask from the incubator, aspirate the old media and add 5 mL 1X PBS.
13. Aspirate 1X PBS, add 2 mL of 1X trypsin to the flask, and place it in an incubator (see conditions in **Section 9.0**) for 5 to 10 min.
14. Repeat **steps 5 through 11** in **Section 9.1.2**, re-suspending the pellet in 20 mL of RPMI.
15. Transfer cells to a T150 flask and place it in the incubator (see conditions in **Section 9.0**) and grow to 80% to 90% confluence (approximately 48 to 72 hrs).
16. Remove the T150 flask from the incubator.

17. Aspirate the RPMI and add 5 mL 1X PBS.
18. Aspirate 1X PBS and add 3 mL 1X trypsin to the T150 flask, making sure that the cells are coated with the trypsin.
19. Incubate cells in an incubator (see conditions in **Section 9.0**) for 5 to 10 min.
20. Detach cells by hitting the side of the flask sharply against the palm or heel of the hand.
21. Confirm cell detachment by examination under an inverted microscope. If cells have not detached, return the flask to the incubator for an additional 2 minutes, then hit the flask again.
22. After cells have detached, add 5mL 1X PBS and transfer the suspended cells from the T150 flask to a 50 mL conical tube. Add an additional 5 mL PBS to the flask, then transfer to the 50 mL conical tube.
23. Immediately add 20 mL RPMI to the conical tube to inhibit further cellular digestion by residual trypsin.
24. Centrifuge at 1000 x g for eight minutes. If a pellet of cells has not formed, centrifuge for an additional 5 minutes.
25. Aspirate the media from the pellet and re-suspend it in 40 mL RPMI, drawing the pellet repeatedly through a 25 mL serological pipette to break up any clumps of cells.
26. Transfer 20 mL of cell suspension to each of two T150 flasks, place them in an incubator (see conditions in **Section 9.0**) and grow to 80% to 90% confluence (approximately 48 to 72 hrs).

9.2 Ongoing Tissue Culture Maintenance, Conditioning in Estrogen-free Medium, and Plating Cells for Experimentation

The following procedure is used to condition the BG1Luc4E2 cells to an estrogen-free environment prior to plating the cells in 96-well plates for analysis of estrogen dependent induction of luciferase activity.

To start the tissue culture maintenance and estrogen-free conditioning, split the two T150 culture flasks into four T150 flasks. Two of these flasks will be used for continuing tissue culture and will use the RPMI media mentioned above. The other two flasks will be cultured in estrogen-free DMEM for experimental use. Extra care must be taken to avoid contaminating the estrogen-free cells with RPMI.

1. Remove both T150 flasks from the incubator.
2. Aspirate the medium and rinse the cells with 5 mL 1X PBS.
3. Aspirate 1X PBS, then add 3 mL 1X trypsin to the flasks, gently swirling the flask to coat all cells with the trypsin.
4. Incubate cells in the incubator (see conditions in **Section 9.0**) for 5 to 10 min.
5. Detach cells by hitting the side of the flask sharply against the palm or heel of the hand.
6. Confirm cell detachment by examination under an inverted microscope. If cells have not detached, return the flask to the incubator for an additional 2 minutes, then hit the flask again.
7. After cells have detached, add 5 mL 1X PBS to the first T150 flask and transfer the suspended cells to the second T150 flask.
8. Transfer the contents of both flasks to a 50 mL conical tube. Repeat step 7 with an additional 5 mL 1X PBS and transfer to the 50 mL conical tube.
9. Immediately add 20 mL estrogen-free DMEM to the 50 mL conical tube to inhibit further cellular digestion by residual trypsin.

10. Centrifuge at 1000 x g for eight minutes. If a pellet of cells has not formed, centrifuge for an additional 5 minutes.
11. Aspirate media from pellet and re-suspend it in 4 mL estrogen-free DMEM, drawing the pellet repeatedly through a 1 mL serological pipette to break up clumps of cells.

At this point, cells are ready to be divided into the ongoing tissue culture and estrogen-free conditioning groups.

9.2.1 Ongoing Tissue Culture Maintenance

1. Add 20 mL RPMI to two T150 flasks.
2. Add 220 µL G418 to the RPMI in the T150 flasks
3. Add 1 mL of cell suspension from **Section 9.2 step 11** to each flask.
4. Place T150 flasks in tissue culture incubator (see conditions in **Section 9.0**) and grow to 80% to 90% confluence (approximately 48 to 72 hrs).
5. Tissue culture medium may need to be changed 24 hours after addition of G418 to remove cells that have died because they do not express reporter plasmid.
6. G418 does not need to be added to the flasks a second time.
7. Repeat **Section 9.2 steps 1-11** for ongoing tissue culture maintenance.

9.2.2 Conditioning in Estrogen-free Medium

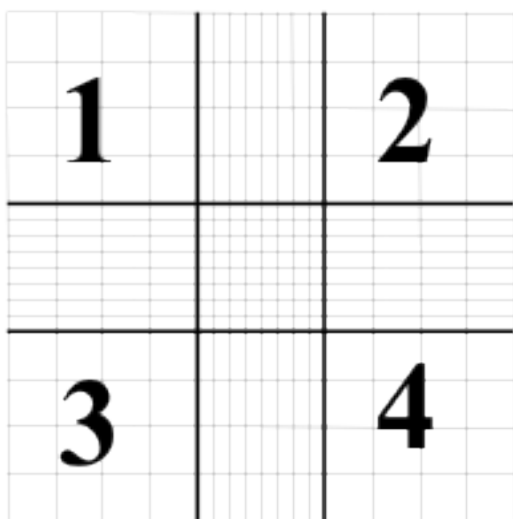
1. Add 20 mL estrogen-free DMEM to two T150 flasks.
2. Add 150 µL G418 to the estrogen-free DMEM in the T150 flasks.
3. Add 1 mL of cell suspension from **Section 9.2 step 11** to each flask.
4. Tissue culture medium may need to be changed 24 hours after addition of G418 to remove cells that have died because they do not express reporter plasmid.
5. G418 does not need to be added to the flasks a second time.
6. Place the T150 flasks in the incubator (see conditions in **Section 9.0**) and grow to 80% to 90% confluence (approximately 48 to 72 hrs).

9.2.3 Plating Cells Grown in Estrogen-free DMEM for Experimentation

1. Remove the T150 flasks that have been conditioned in estrogen-free DMEM for 48 to 72 hours from the incubator.
2. Aspirate the medium, then rinse the cells with 5 mL 1X PBS.
3. Aspirate 1X PBS, then add 3 mL 1X trypsin to the flasks, gently swirling the flask to coat all cells with the trypsin.
4. Place the flasks in an incubator (see conditions in **Section 9.0**) for 5 to 10 min.
5. Detach cells by hitting the side of the flask sharply against the palm or the heel of the hand.
6. Confirm cell detachment by examination under an inverted microscope. If cells have not detached, return the flask to the incubator for 2 additional minutes, then hit the flask again.
7. After cells have detached, add 5 mL 1X PBS and transfer the suspended cells from the T150 flask to a 50 mL conical tube. Add an additional 5 mL PBS to the flask, then transfer to the 50 mL conical tube.

8. Immediately add 20 mL estrogen-free DMEM to each conical tube to inhibit further cellular digestion by residual trypsin.
9. Centrifuge at 1000 x g for eight minutes. If a pellet of cells has not formed, centrifuge for an additional 5 minutes.
10. Aspirate off the media from the pellet and re-suspend it in 20 mL DMEM, drawing the pellet repeatedly through a 25 mL serological pipette to break up any clumps of cells.
11. Pipette 15 μ L of the cell suspension into the “v” shaped slot on the hemocytometer. Ensure that the solution covers the entire surface area of the hemocytometer grid, and allow cells to settle before counting.
12. Using 100x magnification, view the counting grid.
13. The counting grid on the hemocytometer consists of nine sections, four of which are counted (upper left, upper right, lower left, and lower right, see **Figure 9-1**). Each section counted consists of four by four grids. Starting at the top left and moving clockwise, count all cells in each of the four by four grids. Some cells will be touching the outside borders of the square, but only count those that touch the top and right borders of the square. This value is then used in the calculation below to get to the desired concentration of 200,000 cells/mL.

Figure 9-1 Hemocytometer Counting Grid



The volume of each square is 10^{-4} mL, therefore:

Cells/mL = (average number per grid) x 10^4 mL. x 1/(starting dilution).

Starting dilution: 20mL (for T150 flasks)

Harvested cells for a T150 flask are suspended in 20 mL of estrogen-free DMEM and sampled for determination of concentration of cells/mL.

Example Calculation:

- Grids 1, 2, 3, and 4 are counted and provide the following data:
 - 50, 51, 49, and 50: average number of cells per grid is equal to 50.

Cells/mL = 50 cells per grid $\div 10^{-4}$ mL volume of grid = 50×10^4 cells/mL (or 500,000 cells/mL)

Total # of Cells Harvested = 500,000 cells/mL x 20 mL

Desired Concentration (or Concentration_{Final})= 200,000 cells/mL

Formula: (Concentration_{Final} x Volume_{Final} = Concentration_{Initial} x Volume_{Initial})

Concentration_{Final} = 200,000 cells/mL

Concentration_{Initial} = 500,000 cells/mL

Volume_{Initial} = 20 mL

Volume_{Final} – to be solved for.

Therefore: 200,000 cells/mL x Volume_{Final} = 500,000 cells/mL x 20 mL

Solving for Volume_{Final} we find = 50 mL

Therefore, add 30 mL of estrogen-free DMEM to the cell suspension for a total volume of 50 mL, which will yield the desired concentration of 200,000 cells/mL for plating.

14. This dilution scheme will give a concentration of 200,000 cells/mL. 200 μ L of this cell suspension is used for each well of a 96-well plate (i.e., 40,000 cells per well).
15. Remove a 96-well plate from its sterile packaging. Use a repeater pipetter to pipette 200 μ L of cell suspension into each well to be used for the testing of coded substances, reference standard and controls (**note**: add 200 μ L of estrogen-free DMEM only to any wells not being used for testing).
16. Incubate plate(s) in an incubator (see conditions in **Section 9.0**) for a minimum of 24 hours, but no longer than 48 hours before dosing.

Two T150 flasks containing cells at 80% to 90% confluence will typically yield sufficient cells to fill four 96-well plates (not including the perimeter wells).

10.0 Preparation of Test Substances

The solvent used for dissolution of test substances is 100% DMSO. All test substances should be allowed to equilibrate to room temperature before being dissolved and diluted. Test substance solutions (except for reference standards and controls) should not be prepared in bulk for use in subsequent tests. Test substances are to be used within 24 hours of preparation. Solutions should not have noticeable precipitate or cloudiness.

All information on weighing, solubility testing, and calculation of final concentrations for test substances, reference standards and controls is to be recorded in the study notebook.

10.1 Determination of Test Substance Solubility

1. Prepare a 200 mg/mL solution of the test substance in 100% DMSO in a 4 mL conical tube.
2. Vortex to mix.
3. If the test substance does not dissolve at 200 mg/mL, prepare a 20 mg/mL solution and vortex as above.
4. If the test substance does not dissolve at 20 mg/mL solution, prepare a 2 mg/mL solution in a 4 mL conical tube and vortex as above.
5. If the test substance does not dissolve at 2 mg/mL, prepare a 0.2 mg/mL solution in a 4 mL conical tube and vortex as above.
6. Continue testing, using 1/10 less substance in each subsequent attempt until test substance is solubilized in DMSO.

Once the test substance has fully dissolved in 100% DMSO, the test substance is ready to be used for BG1Luc ER TA testing.

11.0 Preparation of Reference Standard, Control and Test Substance Stock Solutions for Range Finder and Comprehensive Testing

All information on preparation of test substances, reference standards and controls is to be recorded in the study notebook.

11.1 Preparation of Ral/E2 Stock Solutions

E2 and raloxifene stocks are prepared separately and then combined into Ral/E2 stocks, which are then used to prepare dosing solutions in **Section 12**.

11.1.1 E2 Stock Solution

The final concentration of the E2 stock solution is 5.0×10^{-3} µg/mL. Prepare the E2 stock as shown in **Table 11-1**.

Table 11-1 Preparation of E2 Stock Solution

Step #	Action	DMSO	E2 Concentration
1	Make a 10 mg/mL stock solution in 100% DMSO in a 4mL vial.	-	10 mg/mL
2	Transfer 10 µL E2 solution from Step #1 to a new 4 mL vial.	Add 990 µL of 100% DMSO. Vortex to mix.	100 µg/mL
3	Transfer 10 µL E2 solution from Step #2 to a new 4mL vial.	Add 990 µL of 100% DMSO. Vortex to mix.	1 µg/mL
4	Transfer 100 µL E2 solution from Step #3 to a new glass container large enough to hold 15 mL.	Add 9.90 mL of 100% DMSO. Vortex to mix.	1.0×10^{-2} µg/mL
5	Transfer 5 mL E2 solution from Step #4 to a new glass container large enough to hold 15 mL	Add 5 mL of 100% DMSO. Vortex to mix.	5.0×10^{-3} µg/mL

11.1.2 Raloxifene Stock Solution

Prepare a 2.5 µg/mL raloxifene working stock solution as shown in **Table 11-2**.

Table 11-2 Preparation of Raloxifene Stock Solution

Step #	Action	DMSO	Raloxifene Concentration
1	Make a 10 mg/mL solution of raloxifene in a 4 mL glass vial.	-	1.0×10^4 µg/mL
2	Transfer 10 µL raloxifene solution from Step #1 to a new 4 mL vial.	Add 990 µL of 100% DMSO. Vortex to mix.	100 µg/mL
3	Transfer 150 µL raloxifene solution from Step #2 to a new 4 mL vial.	Add 2.850 mL of 100% DMSO. Vortex to mix.	5 µg/mL
4	Transfer 1.5 mL raloxifene solution from Step #3 to a new 13 mm test tube.	Add 1.5 mL of 100% DMSO. Vortex to mix.	2.5 µg/mL

11.2 Ral/E2 Range Finder Testing Stock

11.2.1 Raloxifene Dilutions

Number three 4 mL vials with the numbers 1 to 3 and use the raloxifene solution prepared in **Section 11.1.2** to make raloxifene dilutions as shown **Table 11-3**.

Table 11-3 Preparation of Raloxifene Dilutions for Range Finder Testing

Step #	Action	DMSO	Raloxifene Concentration
1	Transfer 250 μL of the 2.5 $\mu\text{g}/\text{mL}$ raloxifene working stock solution to a 4 mL tube	Add 750 μL of 100% DMSO and vortex	$6.25 \times 10^{-1} \mu\text{g}/\text{mL}$
2	Transfer 500 μL of the $6.25 \times 10^{-1} \mu\text{g}/\text{mL}$ raloxifene solution to a 4 mL tube	Add 500 μL of 100% DMSO and vortex	$3.13 \times 10^{-1} \mu\text{g}/\text{mL}$
3	Transfer 250 μL of the $3.13 \times 10^{-1} \mu\text{g}/\text{mL}$ raloxifene solution to a 4 mL tube	Add 750 μL of 100% DMSO and vortex	$7.81 \times 10^{-2} \mu\text{g}/\text{mL}$
4	Transfer 125 μL of the $7.81 \times 10^{-2} \mu\text{g}/\text{mL}$ raloxifene solution to a 4 mL tube	Add 375 μL of 100% DMSO and vortex	$1.95 \times 10^{-2} \mu\text{g}/\text{mL}$

11.2.2 Preparation of Ral/E2 Range Finder Working Stocks

Label three 4 mL conical tubes with numbers 1 through 3 and add 500 μL of the $5 \times 10^{-3} \mu\text{g}/\text{mL}$ E2 solution prepared in **Section 11.1.1** to each tube. Add 500 μL of the 3.13×10^{-1} , 7.81×10^{-2} , and $1.95 \times 10^{-2} \mu\text{g}/\text{mL}$ raloxifene solutions prepared in **Section 11.2.1** to tubes 1, 2, and 3 respectively. Vortex each tube to mix. The final concentrations for raloxifene and E2 are listed in **Table 11-4**.

Table 11-4 Concentrations of Raloxifene and E2 in the Ral/E2 Range Finder Working Stocks

Tube #	Raloxifene ($\mu\text{g}/\text{mL}$)	E2 ($\mu\text{g}/\text{mL}$)
1	1.56×10^{-1}	2.5×10^{-3}
2	3.91×10^{-2}	2.5×10^{-3}
3	9.77×10^{-3}	2.5×10^{-3}

11.3 Ral/E2 Comprehensive Testing Stock

11.3.1 Raloxifene Dilutions

Use the raloxifene solution prepared in **Section 11.1.2** to make a nine-point serial dilution of raloxifene as shown **Table 11-5**.

Table 11-5 Preparation of Raloxifene Dilutions for Comprehensive Testing

Step #	Action	DMSO	Discard	Raloxifene Concentration
1	Transfer 500 μL of the raloxifene working stock solution to a new 4 mL vial.	-	-	2.5 $\mu\text{g}/\text{mL}$
2	Transfer 500 μL of the raloxifene working stock solution to a new 4 mL vial.	Add 500 μL of 100% DMSO. Vortex to mix.	-	1.25 $\mu\text{g}/\text{mL}$
3	Transfer 500 μL raloxifene solution from Step #2 to a new 4 mL vial.	Add 500 μL of 100% DMSO. Vortex to mix.	-	$6.25 \times 10^{-1} \mu\text{g}/\text{mL}$
4	Transfer 500 μL raloxifene solution from Step #3 to a new 4 mL vial.	Add 500 μL of 100% DMSO. Vortex to mix.	-	$3.13 \times 10^{-1} \mu\text{g}/\text{mL}$
5	Transfer 500 μL raloxifene solution from Step #4 to a new 4 mL vial.	Add 500 μL of 100% DMSO. Vortex to mix.	-	$1.56 \times 10^{-1} \mu\text{g}/\text{mL}$

Step #	Action	DMSO	Discard	Raloxifene Concentration
6	Transfer 500 μL raloxifene solution from Step #5 to a new 4 mL vial.	Add 500 μL of 100% DMSO. Vortex to mix.	-	$7.81 \times 10^{-2} \mu\text{g/mL}$
7	Transfer 500 μL raloxifene solution from Step #6 to a new 4 mL vial.	Add 500 μL of 100% DMSO. Vortex to mix.	-	$3.91 \times 10^{-2} \mu\text{g/mL}$
8	Transfer 500 μL raloxifene solution from Step #7 to a new 4 mL vial.	Add 500 μL of 100% DMSO. Vortex to mix.		$1.95 \times 10^{-2} \mu\text{g/mL}$
9	Transfer 500 μL raloxifene solution from Step #8 to a new 4 mL vial.	Add 500 μL of 100% DMSO. Vortex to mix.	Discard 500 μL from Tube #9	$9.77 \times 10^{-3} \mu\text{g/mL}$

11.3.2 Preparation of Ral/E2 Comprehensive Testing Working Stocks:

Add 500 μL of the $5 \times 10^{-3} \mu\text{g/mL}$ E2 solution prepared in **Section 11.1.1** to each of the 9 raloxifene dilution vials (including the working stock solution in Tube #1). Vortex each tube to mix. The final concentrations for raloxifene and E2 are listed in **Table 11-6**.

Table 11-6 Concentrations of Raloxifene and E2 in the Ral/E2 Working Stocks

Tube #	Raloxifene ($\mu\text{g/mL}$)	E2 ($\mu\text{g/mL}$)
1	1.25	2.5×10^{-3}
2	6.25×10^{-1}	2.5×10^{-3}
3	3.13×10^1	2.5×10^{-3}
4	1.56×10^{-1}	2.5×10^{-3}
5	7.81×10^{-2}	2.5×10^{-3}
6	3.91×10^{-2}	2.5×10^{-3}
7	1.95×10^{-2}	2.5×10^{-3}
8	9.77×10^{-3}	2.5×10^{-3}
9	4.88×10^{-3}	2.5×10^{-3}

11.4 TAM/E2 Stock Solution

To prepare the TAM/E2 stock solution, proceed as follows:

1. Prepare 1 mL of $2.52 \times 10^{-1} \mu\text{g/mL}$ tamoxifen
2. Add 1 mL of $5 \times 10^{-3} \mu\text{g/mL}$ E2 (prepared as in **Section 11.1.1**) to the $2.52 \times 10^{-1} \mu\text{g/mL}$ tamoxifen. This will make a working solution of $1.26 \times 10^{-1} \mu\text{g/mL}$ tamoxifen with $2.5 \times 10^{-3} \mu\text{g/mL}$ E2.

12.0 Preparation of Reference Standard, Control and Test Substance Dosing Solutions for Range Finder and Comprehensive Testing

12.1 Preparation of Reference Standard and Control Dosing Solutions - Range Finder Testing

Range finder testing is conducted on 96-well plates using three concentrations of Ral/E2 in duplicate as the reference standard. Three replicate wells for the DMSO, and E2 controls are included on each plate.

All “dosing solutions” of test substance concentrations are to be expressed as $\mu\text{g/mL}$ in the study notebook and in all laboratory reports. Dosing solutions are to be used within 24 hours of preparation.

12.1.1 Preparation of Ral/E2 Reference Standard Range Finder Dosing Solutions

1. Label three 13 mm glass tubes with the numbers 1 to 3.
2. Add 6 μL Ral/E2 stock from tube #1 (**Section 11.2.2**) to 13 mm glass test tube #1.
3. Add 6 μL of Ral/E2 stock from tube #2 from **Section 11.2.2** to the 13 mm glass test tube labeled #2. Repeat for tube #3.

4. Add 600 µL of estrogen-free DMEM to each tube and vortex.

12.1.2 Preparation of DMSO Control Range Finder Dosing Solution

1. Add 8 µL of 100% DMSO to a 13 mm glass test tube.
2. Add 800 µL of estrogen-free DMEM to each tube and vortex.

12.1.3 Preparation of E2 Control Range Finder Dosing Solution

1. Add 4 µL of the E2 stock from **Section 11.1.1** to a 13 mm glass test tube.
2. Add 4 µL of 100% DMSO to the tube.
3. Add 800 µL of estrogen-free DMEM to the tube and vortex to mix.

12.2 Preparation of Test Substance Dosing Solutions for Range Finder Testing

Range finder experiments are used to determine the concentrations of test substance to be used during comprehensive testing. Antagonist range finding for coded substances consists of seven-point 1:10 serial dilutions in duplicate.

To prepare test substance dosing solutions:

1. Label two sets of seven glass 13 mm test tubes with the numbers 1 through 7 and place them in a test tube rack. Perform a serial dilution of test substance as shown in **Table 12-1** using one set of tubes.

Table 12-1 Preparation of Test Substance Serial Dilution for Range Finder Testing

Tube #	100% DMSO	Test Substance ¹	Final Volume
1	-	100 µL of test substance solution from Section 10.1	100 µL
2	90 µL	10 µL of test substance solution from Section 10.1	100 µL
3	90 µL	10 µL from Tube #2	100 µL
4	90 µL	10 µL from Tube #3	100 µL
5	90 µL	10 µL from Tube #4	100 µL
6	90 µL	10 µL from Tube #5	100 µL
7	90 µL	10 µL from Tube #6	100 µL

¹ Vortex tubes #2 through 6 before removing test substance/DMSO solution to place in the next tube in the series.

2. Transfer test substance/DMSO solutions to the second set of labeled tubes and add E2 as shown in **Table 12-2**.

Table 12-2 Addition of E2 to Test Substance Serial Dilution for Range Finder Testing

Tube Number	Test Substance	E2	Estrogen-free DMEM ³	Final Volume
1	Transfer 4 µL of test substance from Tube #1 in Section 12.2 step 1 to a new tube	Add 4 µL of the 5 x 10 ⁻³ µg/mL E2 solution prepared in Section 11.1.1 . Vortex to mix.	800 µL	808 µL
2	Transfer 4 µL of test substance from Tube #2 to a new tube	Add 4 µL of the 5 x 10 ⁻³ µg/mL E2 solution prepared in Section 11.1.1 . Vortex to mix.	800 µL	808 µL
3	Transfer 4 µL of test substance from Tube #3 to a new tube	Add 4 µL of the 5 x 10 ⁻³ µg/mL E2 solution prepared in Section 11.1.1 . Vortex to mix.	800 µL	808 µL
4	Transfer 4 µL of test substance from Tube #4 to a new tube	Add 4 µL of the 5 x 10 ⁻³ µg/mL E2 solution prepared in Section 11.1.1 . Vortex to mix.	800 µL	808 µL

Tube Number	Test Substance	E2	Estrogen-free DMEM ³	Final Volume
5	Transfer 4 µL of test substance from Tube #5 to a new tube	Add 4 µL of the 5 x 10 ⁻³ µg/mL E2 solution prepared in Section 11.1.1 . Vortex to mix.	800 µL	808 µL
6	Transfer 4 µL of test substance from Tube #6 to a new tube	Add 4 µL of the 5 x 10 ⁻³ µg/mL E2 solution prepared in Section 11.1.1 . Vortex to mix.	800 µL	808 µL
7	Transfer 4 µL of test substance from Tube #7 to a new tube	Add 4 µL of the 5 x 10 ⁻³ µg/mL E2 solution prepared in Section 11.1.1 . Vortex to mix.	800 µL	808 µL

Determination of whether a substance is positive in range finder testing and selection of starting concentrations for comprehensive testing will be discussed in **Section 14.0**.

12.3 Preparation of Reference Standard and Control Dosing Solutions for Comprehensive Testing

Comprehensive testing is conducted on 96-well plates using nine concentrations of Ral/E2 in duplicate as the reference standard. Four replicate wells for the DMSO, E2 and TAM/E2 controls are included on each plate.

All “dosing solutions” of test substance concentrations are to be expressed as µg/mL in the study notebook and in all laboratory reports.

Store dosing solutions at room temperature. Use within 24 hours of preparation.

12.3.1 Preparation of Ral/E2 Reference Standard Dosing Solutions for Comprehensive Testing

In preparation for making Ral/E2 1:2 serial dilutions, label two sets of nine glass 13 mm test tubes with the numbers 1 through 9 and place them in a test tube rack. Tube number 1 will contain the highest concentration of raloxifene (**Table 12-3**).

Table 12-3 Preparation of Ral/E2 Reference Standard Dosing Solution for Comprehensive Testing

Tube Number	Ral/E2 Stock	Estrogen-free DMEM	Final Volume
1	6 µL of Tube #1 from Section 11.3.2	600 µL	606 µL
2	6 µL of Tube #2 from Section 11.3.2	600 µL	606 µL
3	6 µL of Tube #3 from Section 11.3.2	600 µL	606 µL
4	6 µL of Tube #4 from Section 11.3.2	600 µL	606 µL
5	6 µL of Tube #5 from Section 11.3.2	600 µL	606 µL
6	6 µL of Tube #6 from Section 11.3.2	600 µL	606 µL
7	6 µL of Tube #7 from Section 11.3.2	600 µL	606 µL
8	6 µL of Tube #8 from Section 11.3.2	600 µL	606 µL
9	6 µL of Tube #9 from Section 11.3.2	600 µL	606 µL

12.3.2 Preparation of DMSO Control Comprehensive Testing Dosing Solution

1. Add 10 µL of 100% DMSO to a 13 mm glass test tube.
2. Add 1000 µL of estrogen-free DMEM to the tube and vortex to mix.

12.3.3 Preparation of E2 Control Comprehensive Testing Dosing Solution

1. Add 5 µL of the E2 stock from **Section 11.1.1** to a 13 mm glass test tube.

2. Add 5 µL of 100% DMSO to the tube.
3. Add 1000 µL of estrogen-free DMEM to the tube and vortex to mix.

12.3.4 Preparation of TAM/E2 Control Comprehensive Dosing Solution

1. Add 10 µL of TAM/E2 from **Section 11.4** to a 13 mm glass test tube.
2. Add 1000 µL of estrogen-free DMEM to the tube and vortex to mix.

12.4 Preparation of Test Substance Dosing Solutions for Comprehensive Testing

Comprehensive testing experiments are used to determine whether a substance possesses ER antagonist activity in the BG1Luc ER TA test method. Antagonist comprehensive testing for coded substances consists of either an 11-point 1:2 serial dilution, or an 11-point 1:5 serial dilution with each concentration tested in triplicate wells of the 96-well plate.

12.4.1 Preparation of Test Substance 1:2 Serial Dilutions for Comprehensive Testing

Start the 11-point serial dilution according to criteria in **Section 14.0**.

To make test substance 1:2 serial dilutions for comprehensive testing:

1. Label eleven 4 mL conical tubes with numbers 1 through 11 and place them in a tube rack.
2. Label eleven 13 mm glass test tubes with numbers 1 through 11, place them in a tube rack, and add 800 µL of estrogen-free DMEM to each tube.

Prepare dilution of test substance as shown in **Table 12-4**.

Table 12-4 Preparation of Test Substance 1:2 Serial Dilutions for Comprehensive Testing

Tube Number	100% DMSO	Test Substance ¹	Discard	E2 Testing Stock	Estrogen-free DMEM ²	Final Volume
1	-	4 µL of test substance solution from Section 10.2.4 step 1	-	4 µL	800 µL	808 µL
2	4 µL	4 µL of test substance solution from Section 10.2.4 step 1	-	4 µL	800 µL	808 µL
3	4 µL	4 µL from Tube #2	-	4 µL	800 µL	808 µL
4	4 µL	4 µL from Tube #3	-	4 µL	800 µL	808 µL
5	4 µL	4 µL from Tube #4	-	4 µL	800 µL	808 µL
6	4 µL	4 µL from Tube #5	-	4 µL	800 µL	808 µL
7	4 µL	4 µL from Tube #6	-	4 µL	800 µL	808 µL
8	4 µL	4 µL from Tube #7	-	4 µL	800 µL	808 µL
9	4 µL	4 µL from Tube #8	-	4 µL	800 µL	808 µL
10	4 µL	4 µL from Tube #9	-	4 µL	800 µL	808 µL
11	4 µL	4 µL from Tube #10	4 µL	4 µL	800 µL	808 µL

¹ Vortex tubes #2 through 10 before removing test substance/DMSO solution to place in the next tube in the series.

² Vortex all tubes to mix media, test substance, and E2.

12.4.2 Preparation of Test Substance 1:5 Serial Dilutions for Comprehensive Testing

Start the 11-point serial dilution according to criteria in **Section 14.0**.

To make test substance 1:5 serial dilutions for comprehensive testing:

1. Label eleven 4 mL conical tubes with numbers 1 through 11 and place them in a tube rack.

- Label eleven 13 mm glass test tubes with numbers 1 through 11, place them in a tube rack, and add 800 μ L of estrogen-free DMEM to each tube.

Prepare dilution of test substance as shown in **Table 12-5**.

Table 12-5 Preparation of Test Substance 1:5 Dilutions for Comprehensive Testing

Tube Number	100% DMSO	Test Substance ¹	Discard	E2 Testing Stock	Estrogen-free DMEM ²	Final Volume
1	-	4 μ L of test substance solution from Section 10.2.4 step 1	-	4 μ L	800 μ L	808 μ L
2	16 μ L	4 μ L of test substance solution from Section 10.2.4 step 1	-	4 μ L	800 μ L	808 μ L
3	16 μ L	4 μ L from Tube #2	-	4 μ L	800 μ L	808 μ L
4	16 μ L	4 μ L from Tube #3	-	4 μ L	800 μ L	808 μ L
5	16 μ L	4 μ L from Tube #4	-	4 μ L	800 μ L	808 μ L
6	16 μ L	4 μ L from Tube #5	-	4 μ L	800 μ L	808 μ L
7	16 μ L	4 μ L from Tube #6	-	4 μ L	800 μ L	808 μ L
8	16 μ L	4 μ L from Tube #7	-	4 μ L	800 μ L	808 μ L
9	16 μ L	4 μ L from Tube #8	-	4 μ L	800 μ L	808 μ L
10	16 μ L	4 μ L from Tube #9	-	4 μ L	800 μ L	808 μ L
11	16 μ L	4 μ L from Tube #10	20 μ L	4 μ L	800 μ L	808 μ L

¹ Vortex tubes #2 through 10 before removing test substance/DMSO solution to place in the next tube in the series.

² Vortex all tubes to mix media, test substance, and E2.

13.0 General Procedures for the Testing of Coded Substances

Range finder experiments are used to determine the concentrations of test substance to be used during comprehensive testing. Comprehensive testing experiments are used to determine whether a substance possesses ER antagonist activity in the BG1Luc ER TA test method.

General procedures for range finder and comprehensive testing are nearly identical. For specific details (such as plate layout) of range finder testing see **Section 14.0**. For specific details of comprehensive testing, see **Section 15.0**.

13.1 Application of Reference Standard, Control and Test Substances

- Remove the 96-well plates (from **Section 9.2.3 step 18**) from the incubator; inspect them using an inverted microscope. Only use plates in which the cells in all wells receive a score of 1 according to **Table 11-1**.
- Remove medium by inverting the plate onto blotter paper. Gently tap plate against the bench surface to remove residual liquid trapped in the wells.
- Add 200 μ L of medium, reference standard, control or test substance to each well (see **Sections 14.0** and **15.0** for specific plate layouts).
- Return plates to incubator (see **Section 9.0** for details) for 19 to 24 hours to allow maximal induction of luciferase activity in the cells.

13.1.1 Preparation of Microsoft Excel® Data Analysis Template For Range Finder Testing

- In Microsoft Excel, open a new “AntRFTemplate” and save it with the appropriate project name as indicated in the NICEATM Style Guide.
- Fill out the table at the top of the “Raw Data” worksheet with information regarding the Microplate reader used, Reading Direction, No. of Intervals, Tot. Meas. Time/Well (s), etc. (**Note:** this

information can be permanently added to the default template “AntRFTemplate” on a laboratory specific basis).

3. Add the following information regarding the assay to the “Compound Tracking” worksheet.
 - Plate # - Enter the experiment ID or plate number into cell E1
 - Cell Lot # - Enter the passage or lot number of the cells used for this experiment into cell B5
 - DMSO and Media Lot #'s – Enter the lot numbers for the DMSO and Media in cells B6 and B7
 - Test Substance Code – Enter the test substance codes into cells C14 to C19
 - Name: Enter the experimenter name into cell G6
 - Date: Enter the experiment date in the format day\month\year into cell G10
 - Comments: - Enter any comments about the experiment in this box (e.g., plate contaminated)
4. Enter the following substance testing information to the “List” worksheet:
 - Concentration – Type in the test substance concentration in $\mu\text{g/mL}$ in descending order.
 - Any specific comments about the test substance or condition of the wells should be entered into this sheet, in the comments section
 - All of the remaining cells on the “List” worksheet should populate automatically.
 - The “Template”, “Compound Mixing” and “Visual Inspection” worksheet should automatically populate with the information entered into the “Compound Tracking” and “List” worksheet.
5. Save the newly named project file.
6. Print out either the “List” or “Template” worksheet for help with dosing the 96-well plate. Sign and date the print out and store in study notebook.

13.1.2 Preparation of Excel Data Analysis Template for Comprehensive Testing

1. In Excel, open a new “AntCTTemplate” and save it with the appropriate project name as indicated in the NICEATM Style Guide.
2. Fill out the table at the top of the “Raw Data” worksheet with information regarding the Microplate reader used, Reading Direction, No. of Intervals, Tot. Meas. Time/Well (s), etc. (**Note:** this information can be permanently added to the default template “AntCTTemplate” on a laboratory-specific basis).
3. On the “Compound Tracking” worksheet, enter the following information:
 - Plate # - Enter the experiment ID or plate number into cell E1
 - Cell Lot # - Enter the passage or lot number of the cells used for this experiment into cell C5
 - DMSO and Media Lot #'s – Enter the lot numbers for the DMSO and Media in cells C6 and C7
 - Test Substance Code – Enter the test substance codes into cells C15 and C16. Enter the test substance dilution into cells D15 and D16.
 - Name: Enter the experimenter name into cell F6
 - Date: Enter the experiment date in the format day\month\year into cell G10
 - Comments: - Enter any comments about the experiment in this box (e.g., plate contaminated)
4. Enter the following substance testing information to the “List” worksheet:
 - Concentration – Type in the test substance concentration in $\mu\text{g/mL}$ in descending order.
 - Any specific comments about the test substance or condition of the wells should be entered into this sheet, in the comments section
 - All of the remaining cells on the “List” worksheet should populate automatically.

- The “Template”, “Compound Mixing” and “Visual Inspection” worksheet should automatically populate with the information entered into the “Compound Tracking” and “List” worksheet.
5. Save the newly named project file.
 6. Print out either the “List” or “Template” worksheet for help with dosing the 96-well plate. Sign and date the print out and store in study notebook.

13.2 Visual Evaluation of Cell Viability

1. Nineteen to 24 hours after dosing the plate, remove the plate from the incubator and remove the media from the wells by inverting the plate onto blotter paper. Gently tap plate against the bench surface to remove residual liquid trapped in the wells.
2. Use a repeat pipetter to add 50 μ L 1X PBS to all wells. Immediately remove PBS by inversion.
3. Using an inverted microscope, inspect all of the wells used in the 96-well plate and record the visual observations using the scores in **Table 13-1**.

Table 13-1 Visual Observation Scoring

Viability Score	Brief Description ¹
1	Normal Cell Morphology and Cell Density
2	Altered Cell Morphology and/or Small Gaps between Cells
3	Altered Cell Morphology and/or Large Gaps between Cells
4	Few (or no) Visible Cells
P	Wells containing precipitation are to be noted with “P”

¹ Reference photomicrographs are provided in the BG1Luc ER TA Validation Study “Visual Observation Cell Viability Manual.”

13.3 Lysis of Cells for BG1Luc ER TA

1. Apply the reflective white backing tape to the bottom of the 96-well plate (this will increase the effectiveness of the luminometer).
2. Add 30 μ L 1X lysis reagent to the assay wells and place the 96-well plate on an orbital shaker for one minute.
3. Remove plate from shaker and measure luminescence (as described in **Section 13.4**).

13.4 Measurement of Luminescence

Luminescence is measured in the range of 300 to 650 nm, using an injecting luminometer and with software that controls the injection volume and measurement interval. Light emission from each well is expressed as relative light units (RLU) per well. The luminometer output is saved as raw data in an Excel spreadsheet. A hard copy of the luminometer raw data should be signed, dated and stored in the study notebook.

13.5 Data Analysis

BG1Luc ER TA uses an Excel spreadsheet to collect and adjust the RLU values obtained from the luminometer and a GraphPad Prism[®] template to analyze and graph data. Plate reduction is calculated using unadjusted RLU values.

The Excel spreadsheet subtracts background luminescence (average DMSO solvent control RLU value) from test substance, reference standard and control RLU values. Test substance, reference standard, and control RLU values are then adjusted relative to the highest Ral/E2 reference standard RLU value, which is set to 10,000. After adjustment, values are transferred to GraphPad Prism for data analysis and graphing.

13.5.1 Collection and Adjustment of Luminometer Data for Range Finder Testing

The following steps describe the procedures required to populate the Excel spreadsheet that has been configured to collect and adjust the RLU values obtained from the luminometer.

1. Open the raw data file and the corresponding experimental Excel[®] spreadsheet from **Section 13.1.1**.
2. Copy the raw data using the Excel copy function, then paste the copied data into cell B19 of the “RAW DATA” tab in the experimental Excel spreadsheet using the **Paste Special – Values** command. This position corresponds to position A1 in the table labeled Table 1 in this tab.
3. Examine the DMSO data in Table 1 of the Excel spreadsheet to determine whether there are any potential outliers. See **Section 13.5.3** for further explanation of outlier determinations.
4. If an outlier is identified, perform the following steps to remove the outlier from calculations:
 - Correct the equation used to calculate DMSO background in Table 1 [e.g., if outlier is located in cell F26, adjust the calculation in cell H40 to read =AVERAGE(E26,G26)]
 - Then correct the equation used to calculate the average DMSO value in Table 2 [e.g., following the above example, adjust cell M42 to read =AVERAGE(E38,G38)]
 - Then correct the equation used to calculate the standard deviation of the DMSO value in Table 2 [e.g., following the above example, adjust cell M43 to read =STDEV(E38,G38)]
5. Excel will automatically subtract the background (the average DMSO control value) from all of the RLU values in Table 1 and populate Table 2 with these adjusted values.
6. To calculate plate reduction, identify the cell containing the Ral/E2a replicate in Table 1, plate row H that has the lowest RLU value (i.e., cell B26, C26, or D26).
7. Identify the cell containing the Ral/E2a replicate in Table 1, plate row H that has the highest RLU value (i.e., cell B26, C26, or D26).
8. Click into cell D14 and enter the cell number from **Section 13.5.1 step 7** into the numerator and the cell number from **step 6** into the denominator.
9. Identify the cell containing the Ral/E2b replicate in Table 1, plate row H that has the lowest RLU value (i.e., cell K26, L26, or M26).
10. Identify the cell containing the Ral/E2b replicate in Table 1, plate row H that has the highest RLU value (i.e., cell K26, L26, or M26).
11. Click into cell E14 and enter the cell number from **Section 13.5.1 step 10** into the numerator and the cell number from **step 9** into the denominator.
12. Click on the “ER Antagonist Report” worksheet.
13. The data for the Ral/E2 reference standard, DMSO, and E2, replicates populate the left portion (columns A-F) of the spreadsheet. The data is automatically placed into an Excel[®] graph.
14. To set the highest RLU value for the reference standard to 10,000 RLU, go to cell C2 of “ER Antagonist Report” worksheet and check the formula contained within that cell. The divisor should be the cell number of the cell containing the highest averaged Ral/E2 RLU value (column A).

15. Open the “Visual Observation Scoring” worksheet. Enter the visual observation scores for each well on the 96-well plate. This data will be linked to the “ER Antagonist Report” worksheet.
16. After the testing results have been evaluated and reviewed for quality control, enter the following information into the Compound Tracking worksheet:
 - Enter pass/fail results for plate reference standard and control parameters into the Plate Pass/Fail Table
 - Enter information from the testing of coded substances into the Testing Results Table
 - Reviewer Name – Enter the name of the person who Reviewed\QC’ed the data into cell A34
 - Date – Enter the date on which the data was reviewed into cell D34

13.5.2 Collection and Adjustment of Luminometer Data for Comprehensive Testing

The following steps describe the procedures required to populate the Excel® spreadsheet that has been configured to collect and adjust the RLU values obtained from the luminometer.

1. Open the raw data file and the corresponding experimental Excel® spreadsheet from **Section 13.1.2**.
2. Copy the raw data using the Excel copy function, then paste the copied data into cell B14 of the “RAW DATA” tab in the experimental Excel® spreadsheet using the **Paste Special – Values** command. This position corresponds to position A1 in the table labeled Table 1 in this tab.
3. Examine the DMSO data in Table 1 of the Excel® spreadsheet to determine whether there are any potential outliers. See **Section 13.5.3** for further explanation of outlier determinations.
4. If an outlier is identified, perform the following steps to remove the outlier from calculations:
 - Correct the equation used to calculate DMSO background in Table 1 [e.g., if outlier is located in cell M14, adjust the calculation in cell H40 to read =AVERAGE(M15:M17)]
 - Then correct the equation used to calculate the average DMSO value in Table 2 [e.g., following the above example, adjust cell M35 to read =AVERAGE(M25:M27)]
 - Then correct the equation used to calculate the standard deviation of the DMSO value in Table 2 [e.g., following the above example, adjust cell M36 to read =STDEV(M25:M27)]
5. Excel will automatically subtract the background (the average DMSO control value) from all of the RLU values in Table 1 and populate Table 2 with these adjusted values.
6. To calculate plate reduction, identify the cell containing the Ral/E2 replicate in plate row G that has the lowest RLU value.
7. Identify the cell containing the Ral/E2 replicate in plate row G that has the highest RLU value.
8. Click into cell D14 and enter the cell number from **Section 13.5.2 step 7** into the numerator and the cell number from **step 6** into the denominator.
9. Identify the cell containing the Ral/E2 replicate in plate row H that has the lowest RLU value.
10. Identify the cell containing the Ral/E2 replicate in plate row H that has the highest RLU value.
11. Click into cell E14 and enter the cell number from **Section 13.5.2 step 10** into the numerator and the cell number from **step 9** into the denominator.
12. Click on the “ER Antagonist Report” worksheet.
13. The data for the Ral/E2 reference standard, DMSO, E2, and TAM/E2 replicates populate the left portion (columns A-E) of the spreadsheet. The data is automatically placed into an Excel® graph.

14. To set the highest RLU value for the reference standard to 10,000 RLU, go to cell D2 of “ER Antagonist Report” worksheet and check the formula contained within that cell. The divisor should be the cell number of the cell containing the highest averaged Ral/E2 RLU value (column A).
15. Open the “Visual Observation Scoring” worksheet. Enter the visual observation scores for each well on the 96-well plate. This data will be linked to the “ER Antagonist Report” worksheet.
16. Copy the data into GraphPad Prism[®] for the calculation of IC₅₀ values and to graph experimental results as indicated in the NICEATM Prism[®] Users Guide.
17. After the testing results have been evaluated and reviewed for quality control, enter the following information into the Compound Tracking worksheet:
 - Enter pass/fail results for plate reference standard and control parameters into the Plate Pass/Fail Table
 - Enter information from the testing of coded substances into the Testing Results Table
 - Reviewer Name – Enter the name of the person who Reviewed\QC’ed the data into cell A34
 - Date – Enter the date on which the data was reviewed into cell D32

13.5.3 Determination of Outliers

The Study Director will use good statistical judgment for determining “unusable” wells that will be excluded from the data analysis and will provide an explanation in the study notebook for any excluded data. This judgment for data acceptance will include Q-test analysis.

The formula for the Q test is:

Outlier – Nearest Neighbor

Range (Highest – Lowest)

where the outlier is the value proposed for exclusion, the nearest neighbor is the value closest to the outlier, and the range is the range of the three values (Q values for samples sizes from 3 to 10 are provided in **Table 13-2**). For example, if the value of this ratio is greater than 0.94 (the Q value for the 90% confidence interval for a sample size of three) or 0.76 (the Q value for the 90% confidence interval for a sample size of four), the outlier may be excluded from data analysis.

Table 13-2 Q Test Values

Number Of Observations	Q Value
2	-
3	0.94
4	0.76
5	0.64
6	0.56
7	0.51
8	0.47
9	0.44
10	0.41

For E2 reference standard replicates (sample size of two), any adjusted RLU value for a replicate at a given concentration of E2 is considered and outlier if its value is more than 20% above or below the adjusted RLU value for that concentration in the historical database.

13.5.4 Acceptance Criteria

13.5.4.1 Range Finder Testing

Acceptance or rejection of a range finder test is based on reference standard and solvent control results from each experiment conducted on a 96-well plate.

- Reduction: Plate reduction, as measured by dividing the averaged highest Ral/E2 reference standard RLU value by the averaged DMSO control RLU value, must be greater than three-fold.
- E2 control results: E2 control RLU values must be within 2.5 times the standard deviation of the historical E2 control mean RLU value (See **Section 16.1**).
- DMSO control results: DMSO control RLU values must be within 2.5 times the standard deviation of the historical solvent control mean RLU value (see **Section 16.2**).

An experiment that fails either acceptance criterion will be discarded and repeated.

13.5.4.2 Comprehensive Testing

Acceptance or rejection of a test is based on evaluation of reference standard and control results from each experiment conducted on a 96-well plate. Results are compared to quality controls (QC) for these parameters derived from the historical database (see **Section 16.5**), which are summarized below.

- Reduction: Plate reduction, as measured by dividing the averaged highest Ral/E2 reference standard RLU value by the averaged lowest Ral/E2 control RLU value, must be greater than three-fold.
- DMSO control results: DMSO control RLU values must be within 2.5 times the standard deviation of the historical solvent control mean RLU value (see **Section 16.5**).
- Reference standard results: The Ral/2 reference standard concentration-response curve should be sigmoidal in shape and have at least three values within the linear portion of the concentration-response curve.
- E2 control results: E2 control RLU values must be within 2.5 times the standard deviation of the historical E2 control mean RLU value.
- Positive control results: TAM/E2 control RLU values must be less than the E2 control mean minus three times the standard deviation from the E2 control mean.

An experiment that fails any single acceptance criterion will be discarded and repeated.

14.0 Range Finder Testing

Antagonist range finding for coded substances consists of seven point, 1:10 serial dilutions tested in duplicate wells of the 96-well plate. **Figure 14-1** contains a template for the plate layout used in antagonist range finder testing.

Figure 14-1 Antagonist Range Finder Plate Layout

TS1-1	TS1-1	TS2-1	TS2-1	TS3-1	TS3-1	TS4-1	TS4-1	TS5-1	TS5-1	TS6-1	TS6-1
TS1-2	TS1-2	TS2-2	TS2-2	TS3-2	TS3-2	TS4-2	TS4-2	TS5-2	TS5-2	TS6-2	TS6-2
TS1-3	TS1-3	TS2-3	TS2-3	TS3-3	TS3-3	TS4-3	TS4-3	TS5-3	TS5-3	TS6-3	TS6-3
TS1-4	TS1-4	TS2-4	TS2-4	TS3-4	TS3-4	TS4-4	TS4-4	TS5-4	TS5-4	TS6-4	TS6-4
TS1-5	TS1-5	TS2-5	TS2-5	TS3-5	TS3-5	TS4-5	TS4-5	TS5-5	TS5-5	TS6-5	TS6-5
TS1-6	TS1-6	TS2-6	TS2-6	TS3-6	TS3-6	TS4-6	TS4-6	TS5-6	TS5-6	TS6-6	TS6-6
TS1-7	TS1-7	TS2-7	TS2-7	TS3-7	TS3-7	TS4-7	TS4-7	TS5-7	TS5-7	TS6-7	TS6-7
Ral-1	Ral-2	Ral-3	VC	VC	VC	E2	E2	E2	Ral-1	Ral-2	Ral-3

Abbreviations: E2 = E2 control; Ral = raloxifene; TS = test substance; VC = vehicle control (DMSO [1% v/v EFM]).

Ral-1 to Ral-3 = concentrations of the raloxifene/E2 reference standard (from high to low)

TS1-1 to TS1-7 = concentrations (from high to low) of test substance 1 (TS1)

TS2-1 to TS2-7 = concentrations (from high to low) of test substance 2 (TS2)

TS3-1 to TS3-7 = concentrations (from high to low) of test substance 3 (TS3)

TS4-1 to TS4-7 = concentrations (from high to low) of test substance 4 (TS4)

TS5-1 to TS5-7 = concentrations (from high to low) of test substance 5 (TS5)

TS6-1 to TS6-7 = concentrations (from high to low) of test substance 6 (TS6)

Evaluate whether range finder experiments have met acceptance criteria (see **Section 13.6.3**).

To determine starting concentrations for comprehensive testing use the following criteria:

- If results in the range finder test suggest that the test substance is negative for antagonist activity (i.e., if there are no points on the test substance concentration curve that are less than the mean minus three times the standard deviation of the E2 control, see **Figure 14-2**), comprehensive testing will be conducted using an 11-point 1:2 serial dilution using the maximum soluble concentration of test substance as the with the limit dose as the starting concentration.
- If results in the range finder test suggest that the test substance is negative for antagonist activity (i.e., if there are no points on the test substance concentration curve that are than the mean minus three times the standard deviation of the E2 control), and the higher concentrations in the range finder are cytotoxic, comprehensive testing will be conducted using an 11 point 1:2 serial dilution with the lowest cytotoxic concentration as the starting concentration (see **Figure 14-3**).
- If results in the range finder test suggest that the test substance is positive for antagonist activity (i.e., if there are points on the test substance concentration curve that are less than the mean minus three times the standard deviation of the E2 control), the top concentration to be used for the 11-point dilution scheme in comprehensive testing should be one of the following:
 - The concentration giving the lowest adjusted RLU value in the range finder
 - The maximum soluble concentration (See Figure 14-2)
 - The lowest cytotoxic concentration (See **Figure 14-3** for a related example).

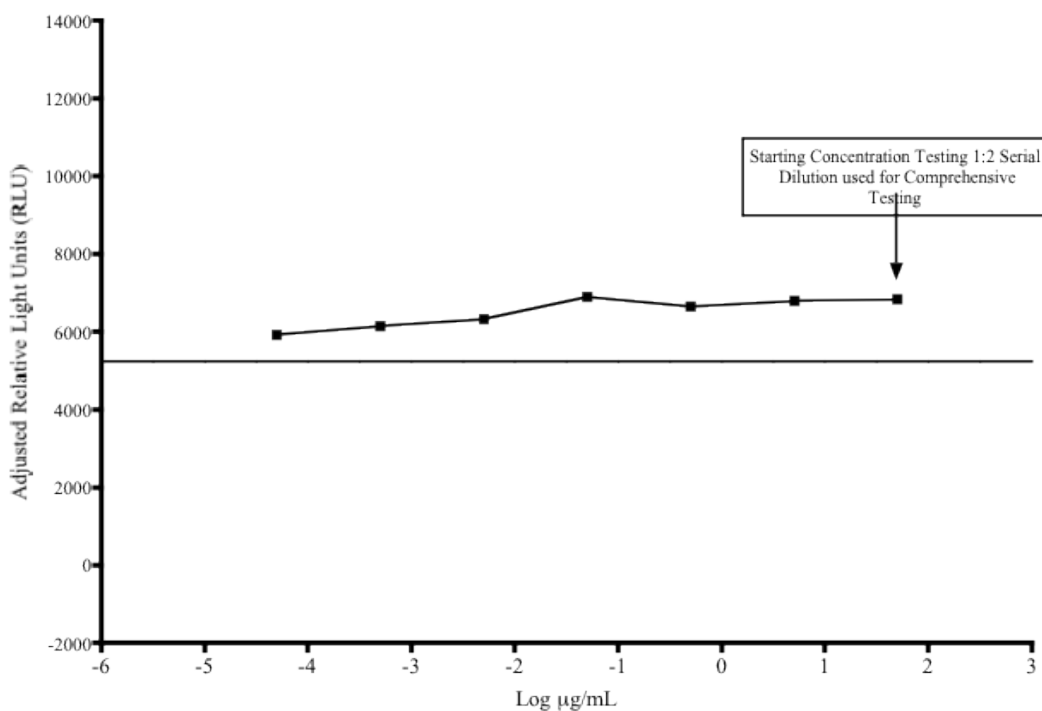
The 11-point dilution scheme will be based on either a 1:2 or 1:5 serial or dilution according to the following criteria:

- An 11-point 1:2 serial dilution should be used if the resulting concentration range (note: an 11-point 1:2 serial dilution will cover a range of concentrations over approximately three orders of

magnitude [three logs]) will encompass the full range of responses based on the concentration response curve generated in the range finder test (see **Figure 14-4**).

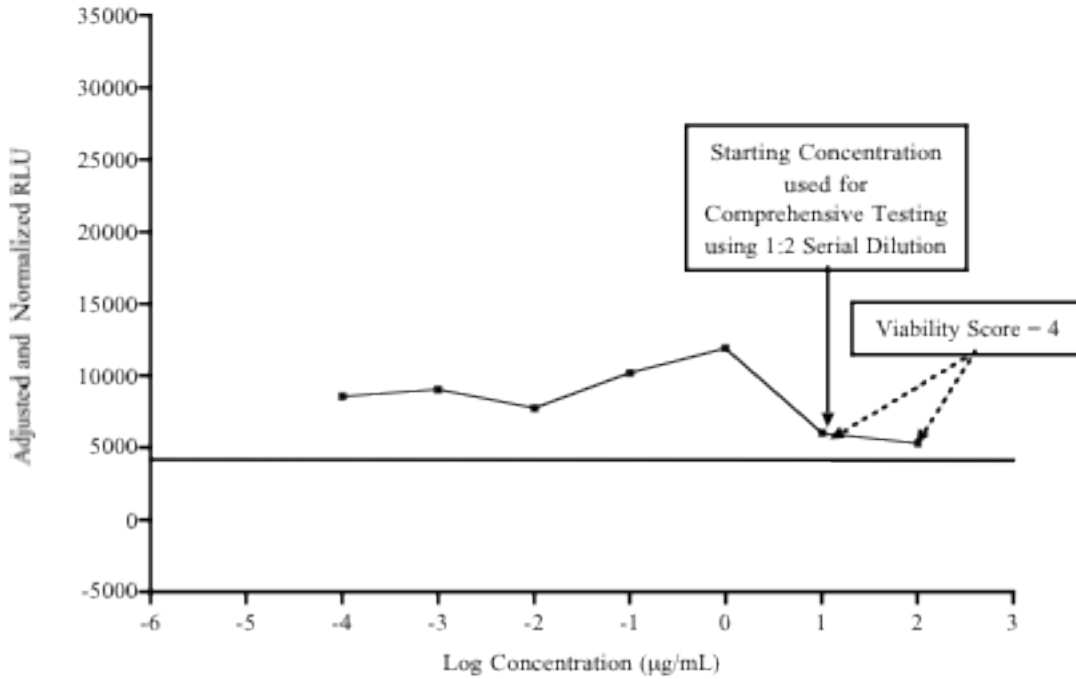
- If the concentration range that would be generated with the 1:2 serial dilution will not encompass the full range of responses based on the concentration response curve in the range finder test (see **Figure 14-5**), an 11-point 1:5 serial dilution should be used instead.
- If a substance exhibits a biphasic concentration response curve in the range finder test (see **Figure 14-6**), both phases should also be resolved in comprehensive testing. In this case, two peaks could potentially be used to identify the top concentration to be used for the 11-point dilution scheme in comprehensive testing. In order to resolve both curves, the top concentration should be based on the peak associated with the higher concentration and the top dose one log concentration higher than the concentration giving the lowest adjusted RLU value in the range finder. An 11-point 1:5 serial dilution should be used.

Figure 14-2 Antagonist Range Finder (Example 1)



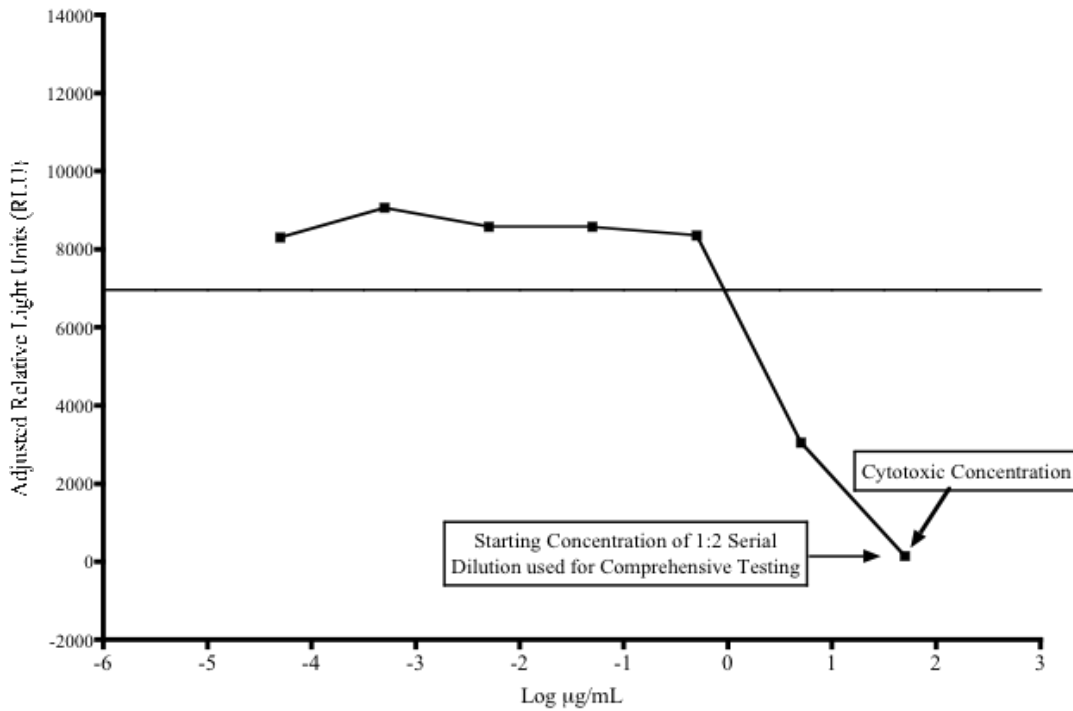
The solid horizontal line represents the mean minus three times the standard deviation of the E2 control.

Figure 14-3 Antagonist Range Finder (Example 2)



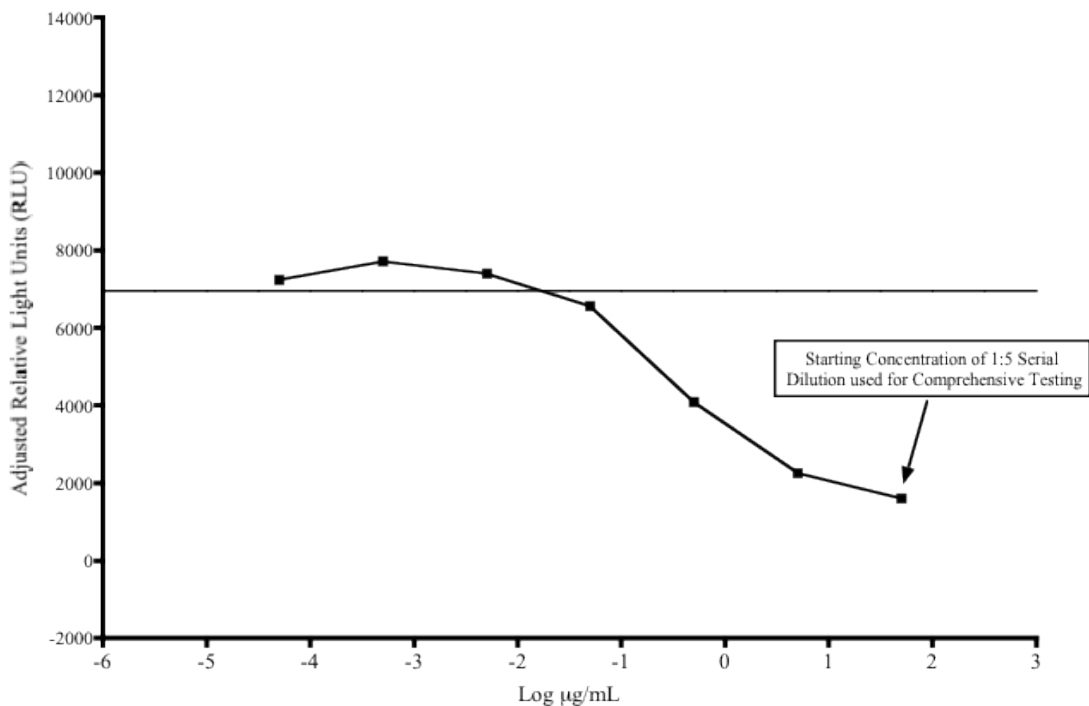
The solid horizontal line represents the mean minus three times the standard deviation of the E2 control.

Figure 14-4 Antagonist Range Finder (Example 3)



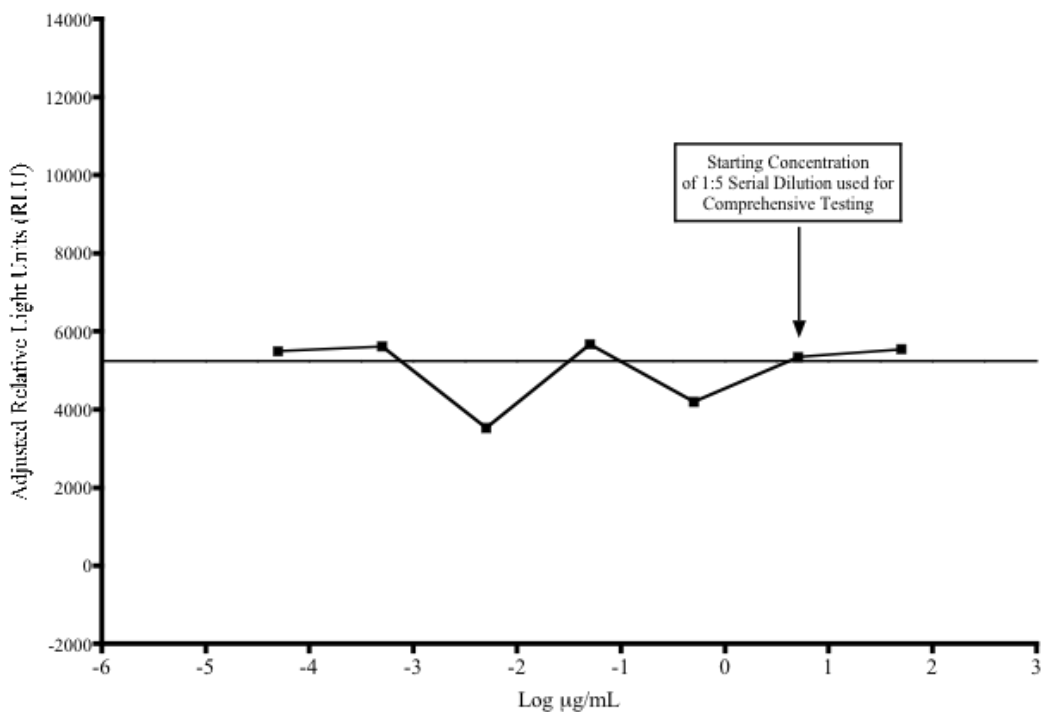
The solid horizontal line represents the mean minus three times the standard deviation of the E2 control.

Figure 14-5 Antagonist Range Finder (Example 4)



The solid horizontal line represents the mean minus three times the standard deviation of the E2 control.

Figure 14-6 Antagonist Range Finder (example 5)



The solid horizontal line represents the mean minus three times the standard deviation of the E2 control.

15.0 Comprehensive Testing

Antagonist comprehensive testing for coded substances consists of 11 point, 1:2 serial dilutions, with each concentration tested in triplicate wells of the 96-well plate. **Figure 15-1** contains a template for the plate layout to be used in antagonist comprehensive testing.

Figure 15-1 Antagonist Comprehensive Test Plate Layout

TS1-1	TS1-2	TS1-3	TS1-4	TS1-5	TS1-6	TS1-7	TS1-8	TS1-9	TS1-10	TS1-11	VC
TS1-1	TS1-2	TS1-3	TS1-4	TS1-5	TS1-6	TS1-7	TS1-8	TS1-9	TS1-10	TS1-11	VC
TS1-1	TS1-2	TS1-3	TS1-4	TS1-5	TS1-6	TS1-7	TS1-8	TS1-9	TS1-10	TS1-11	VC
TS2-1	TS2-2	TS2-3	TS2-4	TS2-5	TS2-6	TS2-7	TS2-8	TS2-9	TS2-10	TS2-11	VC
TS2-1	TS2-2	TS2-3	TS2-4	TS2-5	TS2-6	TS2-7	TS2-8	TS2-9	TS2-10	TS2-11	Tam
TS2-1	TS2-2	TS2-3	TS2-4	TS2-5	TS2-6	TS2-7	TS2-8	TS2-9	TS2-10	TS2-11	Tam
Ral-1	Ral-2	Ral-3	Ral-4	Ral-5	Ral-6	Ral-7	Ral-8	Ral-9	E2	E2	Tam
Ral-1	Ral-2	Ral-3	Ral-4	Ral-5	Ral-6	Ral-7	Ral-8	Ral-9	E2	E2	Tam

Note: All reference and test wells contain a fixed concentration of E2 (4.90×10^{-11} M).

Abbreviations: E2 = E2 control; Tam = tamoxifen/E2 weak positive control; VC = vehicle control (DMSO [1% v/v EFM]).

Ral-1 to Ral-9 = concentrations of the raloxifene/E2 reference standard (from high to low)

TS1-1 to TS1-11 = concentrations (from high to low) of test substance 1 (TS1)

TS2-1 to TS2-11 = concentrations (from high to low) of test substance 2 (TS2)

Evaluate whether comprehensive experiments have met acceptance criteria (see **Section 13.6.3**) and graph the data as described in the NICEATM Prism[®] users guide. Then evaluate the test substance results.

15.1 Test Substance Positive and Negative Criteria

Positive Classification:

- All test substances classified as positive for ER antagonist activity should have a concentration–response curve consisting of a baseline followed by a negative slope.
- The line defining the negative slope must contain at least three points with nonoverlapping error bars. Points forming the baseline are excluded, but the linear portion of the curve may include the first point of the plateau.
- A positive classification requires a response amplitude, the difference between baseline and bottom, of at least 20% of the maximal value for the reference estrogen (i.e., 2000 RLU when the maximal response value of the reference estrogen is adjusted to 10,000 RLU).
- The highest noncytotoxic concentrations of the test substance should be less than or equal to 1×10^{-5} M (approximately 3.13×10^0 μ g/ μ L).
- If possible, an IC₅₀ value should be calculated for each positive substance

Negative Classification:

- Test substances are classified as negative for antagonist activity if all data points are above the EC₈₀ value (80% of the E2 response, or 8000 RLU).

Inadequate Classification:

- Data are classified as inadequate if, because of major qualitative or quantitative limitations, they cannot be interpreted as valid for showing either the presence or absence of activity.

16.0 Compilation of the Historical Quality Control Database

Historical databases are maintained in order to ensure that the assay is functioning properly. Historical databases are compiled using Excel spreadsheets and are separate from the spreadsheets used to collect the data for individual test plates. Reference standard and control data is used to develop and maintain the historical database and are used as quality controls to determine acceptance of individual test plates.

The sources of data needed to compile the historical database for the E2 control and TAM/E2 control values are the experiment specific Excel data collection and analysis spreadsheets (see **Section 13.5.2**) used for BG1Luc ER TA antagonist testing. The sources of the data needed to compile the historical database for the DMSO control are the experiment specific Excel data collection and analysis spreadsheets used for BG1Luc ER TA antagonist and agonist testing (see **Section 13.5.2** of the BG1Luc ER TA antagonist protocol and **Section 11.5.2** in the BG1Luc ER TA agonist protocol).

16.1 E2 Control

Open the BG1Luc ER TA antagonist specific historical database Excel spreadsheet (LUMI_AgandAntQC.xls) and save under a new name using the Excel “Save As” function, adding the laboratory designator to the file name (e.g., for Laboratory H, new name = HLUMI_AgandAntQC.xls). Open the E2 Control worksheet and enter the date and experiment name into worksheet columns A and B respectively. Enter the experimental mean adjusted E2 control value (from cell D37 in the ER Antagonist Report worksheet of the Excel® data collection and analysis spreadsheet) into the Antagonist E2 control worksheet, column C. Acceptance or rejection of plate E2 control data for comprehensive testing is based on whether the mean plate E2 RLU value falls within 2.5 times the standard deviation of the E2 value in the historical database (columns G and H in the E2 Control worksheet).

16.2 DMSO

Open the combined agonist and antagonist BG1Luc ER TA historical database Excel® spreadsheet (LUMI_AgandAntQC.xls) and save under a new name using the Excel® “Save As” function, adding the laboratory designator to the file name (e.g., for Laboratory H, new name = HLUMI_AgandAntQC.xls). Enter the date and experiment name into worksheet columns A and B respectively. Enter the experimental mean DMSO control value (from cell H37 in the RAW DATA worksheet of the agonist and antagonist Excel® data collection and analysis spreadsheet) into worksheet column C. Acceptance or rejection of the plate DMSO control data for range finding and comprehensive testing is based on whether the mean plate DMSO RLU value falls within 2.5 times the standard deviation of the DMSO value in the historical database (columns G and H in the DMSO worksheet).

17.0 Quality Testing of Materials

All information pertaining to the preparation and testing of media, media supplements, and other materials should be recorded in the Study Notebook.

17.1 Tissue Culture Media

Each lot of tissue culture medium must be tested in a single growth flask of cells before use in ongoing tissue culture or experimentation (**note:** each bottle within a given lot of charcoal/dextran treated FBS must be tested separately).

1. Every new lot of media (RPMI and DMEM) and media components (FBS, charcoal/dextran treated FBS, and L-glutamine) must first be tested on the BG1Luc ER TA prior to being used in any GLP acceptable assays.
2. Add 4 μ L of DMSO (previously tested) into four separate 13 mm tubes.
3. Add 400 μ L media (to be tested) to 13 mm tube.
4. Dose an experimental plate as in **Section 12.0**, treating the media being tested as a test substance.
5. Analyze 96-well plate as described in **Section 12.0**, comparing the data from the DMSO controls made using previously tested tissue culture media to the new media being tested.
6. Use the agonist historical database to determine if the new media with DMSO lies within 2.5 standard deviations of the mean for the media. If the RLU values for the new media with DMSO lie within 2.5 standard deviations of the DMSO mean from the historical database, the new lot of media is acceptable. If the RLU values for the new media with DMSO do not lie within 2.5 standard deviations of the DMSO mean from the historical database, the new lot may not be used in the assay.
7. Note date and lot number in study notebook.
8. If the new bottle passes quality testing as described in **Section 15.1 step 6**, apply the media to a single flask cells and observe the cells growth and morphology over the following 2 to 3 days. If there is no change in growth or morphology, the new media is acceptable for use.

17.2 G418

1. New lots of G418 must first be tested on the BG1Luc ER TA prior to being used in any GLP acceptable assays.
2. Add 220 μ L of G418 (previously tested) to a single flask containing cells growing in RPMI.
3. Add 220 μ L of G418 (to be tested) to a different flask containing cells growing in RPMI.
4. Observe cellular growth and morphology in both tissue culture flasks over a 48 to 72 hour period. If there are no differences in observed growth rate and morphology between the two flasks, the new G418 lot is acceptable.
5. If cellular growth is decreased, or the cells exhibit abnormal morphology, the new lot of G418 is not acceptable.
6. Note date and lot number in study book.

17.3 DMSO

1. Every new bottle of DMSO must be tested on the BG1Luc ER TA prior to use in any GLP acceptable assays.
2. Add 4 μ L of DMSO (to be tested) into four separate 13 mm tubes.
3. Add 400 μ L media (previously tested) the same tubes.
4. Dose an experimental plate as in **Section 15.0**, treating the media being tested as a test substance.

5. Analyze 96-well plate as described in **Section 15.0**, comparing the data from the DMSO controls made using previously tested tissue culture media to the new media being tested.
6. Use the agonist historical database to determine if media with new DMSO lies within 2.5 standard deviations of the DMSO mean from historical database. If the RLU values for the media with new DMSO lie within 2.5 standard deviations of the DMSO mean from the historical database, the new lot of DMSO is acceptable. If the RLU values for media with new DMSO do not lie within 2.5 standard deviations of the DMSO mean from historical database, the new lot may not be used in the assay.
7. Note the date, lot number, and bottle number in study book.
8. If no DMSO has been previously tested, test several bottles as described in **Section 15.3**, and determine whether any of the bottles of DMSO have a higher average RLU than the other bottle(s) tested. Use the DMSO with the lowest average RLU for official experiments.

17.4 Plastic Tissue Culture Materials

1. Grow one set of cells, plate them for experiments on plastic ware from the new lot and one set of cells in the plastic ware from a previous lot, and dose them with E2 reference standard and controls.
2. Perform the BG1Luc ER TA experiment with both sets of cells.
3. If all of the analysis falls within acceptable QC criteria, then the new manufacturer's products may be used.

18.0 References

Coecke S. Guidance on Good Cell Culture Practice. 2005. ATLA 33, 261-287.

Eli Lilly and Company and National Institutes of Health Chemical Genomics Center. 2005. Assay Guidance Manual Version 4.1. Bethesda, MD: National Institutes of Health. Available: http://www.ncgc.nih.gov/guidance/manual_toc.html [accessed 05 September 2006]

ICCVAM. 2001. Guidance Document on Using *In Vitro* Data to Estimate *In Vivo* Starting Doses for Acute Toxicity. NIH Pub. No. 01-4500. Research Triangle Park, NC: National Institute of Environmental Health Sciences. Available: http://iccvam.niehs.nih.gov/methods/invidocs/guidance/iv_guide.pdf [accessed 31 August 2006]

This page intentionally left blank