

## **Predictive Models for Acute Oral Systemic Toxicity Workshop**

### **Platform Presentation Guidelines for End User Application**

Thank you for accepting to give a platform presentation at the Predictive Models for Acute Oral Systemic Toxicity Workshop on April 11-12, 2018 at the William H. Natcher Conference Center, NIH Main Campus, Bethesda, MD. Platform presentation sessions will be 90 minutes in duration, including a 30-minute panel discussion with all speakers from the session. Each presentation should be 10-12 minutes in length and should address some of the suggested information guideline questions listed below.

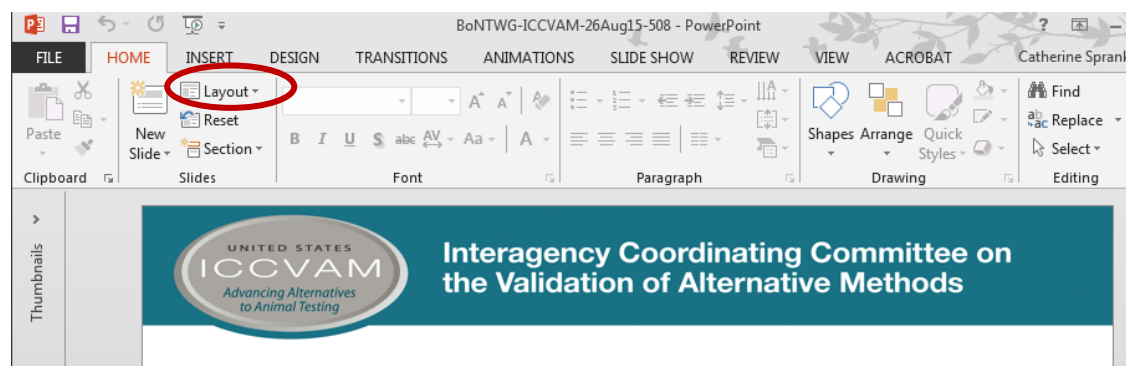
#### *Suggested information to address in presentations*

- Regulatory agencies perspectives about what their needs are when it comes to computational approaches, how they see the use of machine learning models in regulatory context, and what they can or cannot use.
- What factors should be considered when evaluating computational approaches for use in predictive toxicology?
- At what point is a computational approach suitable for an actual risk assessment?
- Case studies on current use of QSAR and computational models in regulatory decision making and/or industry applications.
- Industry perspectives about what their experiences are when it comes to computational approaches, how they see the use of machine learning models in product development and regulatory submissions, and what they can or cannot use.
- According to REACH guidance, QSARs can be used as one of the elements in a weight of evidence approach. What is industry perspective/experience with that?
- Should regulatory agencies be required to use open source and freely available software (as in no cost) when making a screening, regulatory or policy decision?
- Other than model performance, what are the key drivers for acceptance of these types of approaches?
- When is mechanistic information essential in order to accept predictions, and when is having a good performing model is enough?

## ***Optimizing PowerPoint presentations for posting on the NICEATM website***

Please refer to the following guidelines as you prepare your presentation. For presentations from the workshop to be posted on the NICEATM website, the files must be compatible with screen readers, navigation aids, and other technologies that may be used by people with disabilities. Presentations that adhere to the guidelines below will be easier to prepare for the web with minimal formatting changes. This allows us to make a presentation that is as close as possible to your original available more promptly.

- **Provide your presentation to us as a PowerPoint file**, rather than as a PDF. It's easier for us to make a PDF for the Web if we have the PowerPoint file available.
- **Use a standard PowerPoint template incorporating your organization's logo and visual concept** if your organization has created one. Avoid pasting logos and other branding graphics as separate images on every slide.
- **Use slide layouts** for (1) title slides and (2) slides with headings and content as you compose your slides. The screenshot below shows the location of the Slide Layout tool (circled) in PowerPoint 2013 for Windows.



- **Avoid special formatting** (shadows, glow, reflection, 3-D effects) on pictures or text.
- **Avoid complex animations** that will lose meaning when displayed as static images. In particular, avoid creating animations that have objects concealing or overlapping other objects.
- **Import only images in .GIF or .JPG format into your presentation.** Other formats such as .TIF can cause problems when exported into PDFs.
- **Use PowerPoint tables for tabular data** rather than inserting an image of data in a table.

- **Check your slides for appropriate contrast** by printing them on a black-and-white printer or viewing them in greyscale. Adjust the color of anything that's difficult to see or understand. Remember that nearly 10% of men are red-green color-blind. Checking your slides for contrast will ensure the slides are understandable to all of your audience.
- **Use speaker notes to provide descriptions** of slides with little or no text and whose meaning might not be immediately obvious. Text will be used to create descriptive text for screen readers.

If you have any questions about these guidelines, please contact NICEATM webmaster Cathy Sprankle at [spranklec@niehs.nih.gov](mailto:spranklec@niehs.nih.gov). Thank you for your help.