



**G I V V I S H**

GLOBAL IN VITRO VALIDATION IN SILICO HUMAN

STREAMLINING HUMAN  
RELEVANT METHOD VALIDATION-  
A 21<sup>st</sup> CENTURY COLLABORATION PLATFORM



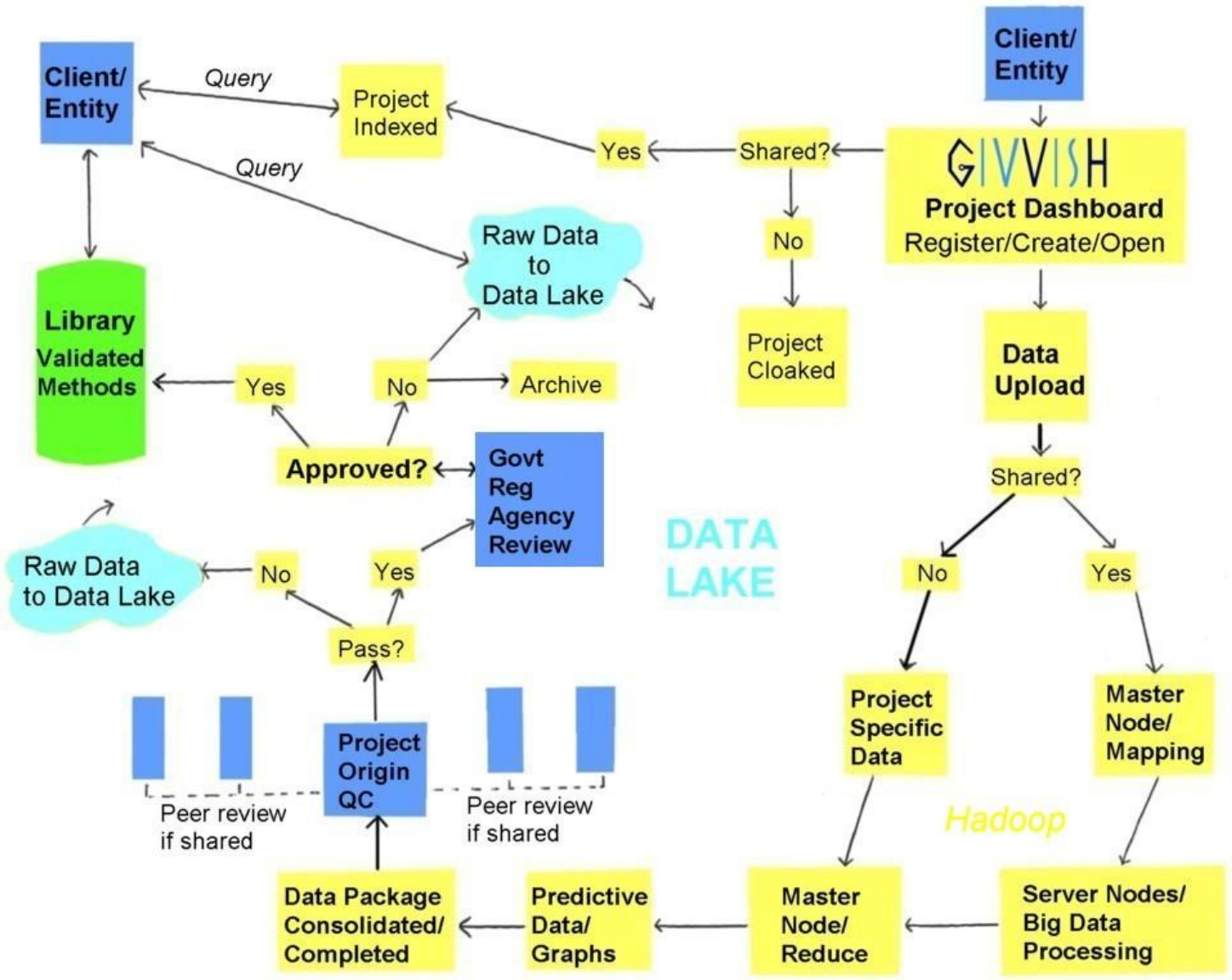
## DATA INPUT ORIGINS:

- INDUSTRY
- GOVERNMENT
- ACADEMIA
- DEVICE MAKERS
- CONSORTIA
- EXISTING DATABASES
- CLINICAL TRIALS
- HISTORICAL DATA
- POST-MARKET DATA



## DATA OUTPUTS:

- CALCULATIONS
- PROBABILITY PLOTS
- DIAGNOSTICS (R, R-sq, p-value, BIC, AIC)
- CORRGRAMS
- ANOVA
- SUMMARY



### KEY FEATURES

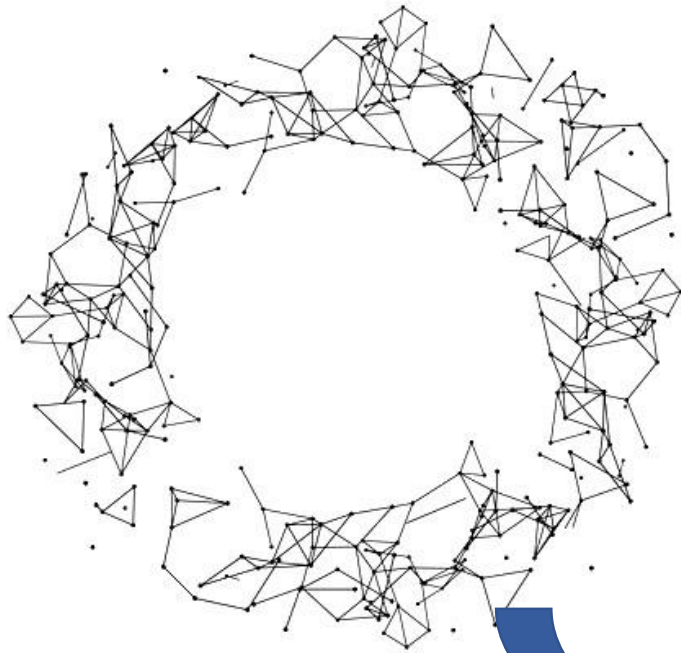
- BOTTOM-UP BUILD
- BIG DATA with REALTIME PROCESSING
- SOCIALIZES THE DATA, THE HUMAN RELEVANT CHALLENGE & THE SOLUTION
- USER-LEVEL (ENTERPRISE LEVEL) SECURITY/SHARING
- COLLABORATIVE
- PEER REVIEW
- CENTRALIZES LIBRARY OF EXISTING VALIDATED METHODS
- ORGANIC VALIDATION MECHANISM
- ORGANIZES DATA/MERGES NEW DATA
- SUPPORTS EDUCATION/ NATURAL LEARNING CURVE
- SUPPORTS REGULATORY DECISION BURDENS
- FEEDBACK MECHANISM TO ALL STAKEHOLDERS
- CENTRALIZES COMMUNICATION
- INFINITE DATA SEARCH CAPABILITIES
- RESEARCH TOOL

Streamlining Validation of Human Relevant Methods utilizing "Big Data"

# The User is a Collaborator

- ✓ Search and View shared data and projects
- ✓ Open and Create New projects and upload data
- ✓ Research, Compute, and Extrapolate data and reports
- ✓ Create and Perform Optimization Studies
- ✓ Perform Hypothesis Testing
- ✓ Create Statistical Reports against any searchable criteria
- ✓ Assess Method Performance against any searchable criteria
- ✓ Peer Review projects and provide feedback
- ✓ Communicate with other platform users
- ✓ Perform Trend Analysis on Validated Methods Life Cycle
- ✓ Conduct Method Comparability Studies
- ✓ Provide feedback on DOE (Design of Experiments)





- ✓ DISCOVER
- ✓ OBSERVE
- ✓ CORRELATE
- ✓ CONFIRM



**SHARING**



GLOBAL IN VITRO VALIDATION IN SILICO HUMAN

Thank You!

Contact:

[Christine.Rowen@GIVVISH.org](mailto:Christine.Rowen@GIVVISH.org)