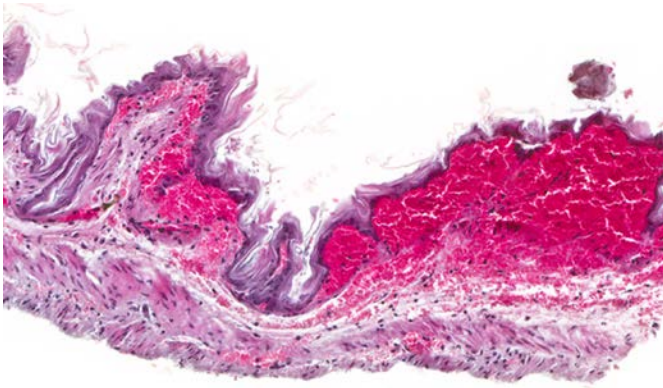


NTP Nonneoplastic Lesion Atlas

Stomach, Forestomach – Hemorrhage



1

Figure Legend: **Figure 1** Stomach, Forestomach - Hemorrhage in a female B6C3F1 mouse from a chronic study. Hemorrhage is present in the submucosa of the forestomach.

Comment: Hemorrhage in the forestomach (Figure 1) may be spontaneous (idiopathic), related to the gavage procedure, or due to direct/indirect chemical toxicity. It is often associated with inflammation.

Recommendation: Hemorrhage should be diagnosed and graded based on the extent of the lesion. Hemorrhage that is a minor component of another process such as ulceration, necrosis, or inflammation is not diagnosed separately unless the hemorrhage is a prominent component of the lesion.

References:

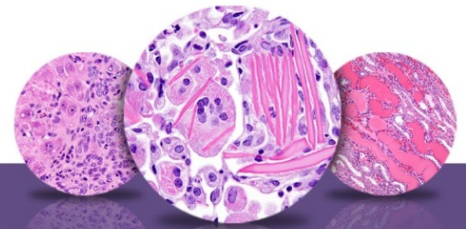
Leininger JR, Jokinen MP, Dangler CA, Whiteley LO. 1999. Oral cavity, esophagus, and stomach. In: Pathology of the Mouse (Maronpot RR, ed). Cache River Press, St Louis, MO, 29-48.
Abstract: <http://www.cacheriverpress.com/books/pathmouse.htm>

Authors:

Linda H. Kooistra, DVM, PhD, DACVP
Pathologist
Charles River Laboratories, Inc.
Research Triangle Park, NC



National Toxicology Program
U.S. Department of Health and Human Services



NTP Nonneoplastic Lesion Atlas

Stomach, Forestomach – Hemorrhage

Authors:

Abraham Nyska, DVM, Diplomate ECVP, Fellow IATP
Expert in Toxicologic Pathology
Visiting Full Professor of Pathology
Sackler School of Medicine, Tel Aviv University
Timrat Israel