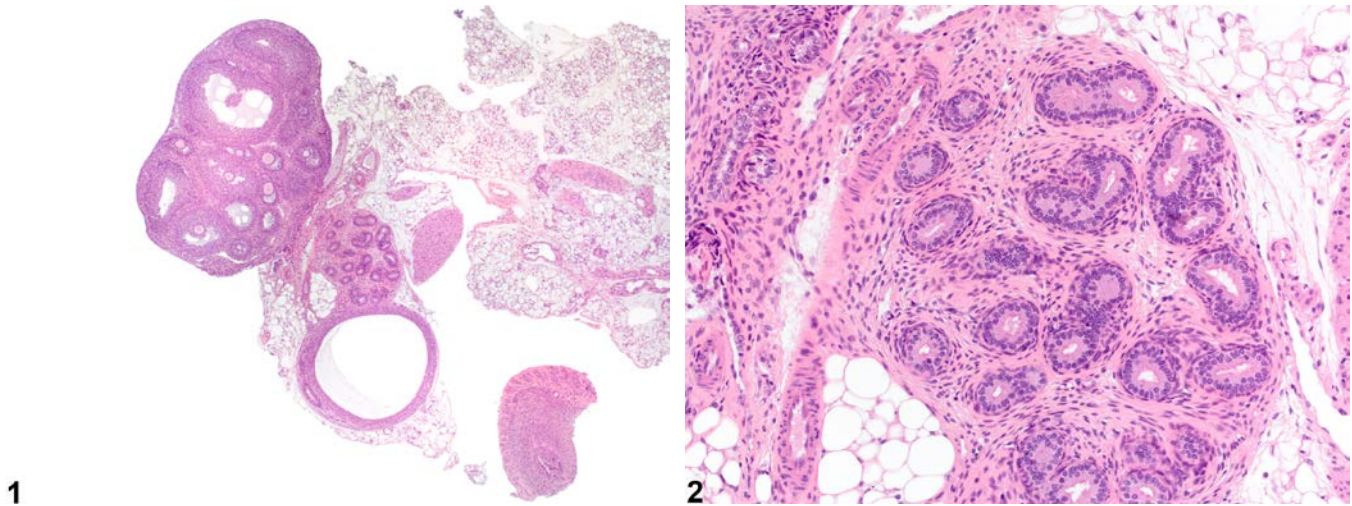




# NTP Nonneoplastic Lesion Atlas

## Ovary – Mesonephric Duct Remnant



**Figure Legend:** **Figure 1** Ovary - Mesonephric duct remnant in a female Wistar Han rat pup from a subchronic study. The cluster of tubules is present in the periovarian tissue. **Figure 2** Ovary - Mesonephric duct remnant in a female Wistar Han rat pup from a subchronic study (higher magnification of Figure 1). The cluster of tubules in the periovarian tissues resembles epididymal tubules.

**Comment:** Mesonephric duct remnants in the ovary are characterized by small clusters of tubules within periovarian tissue (Figure 1 and Figure 2). The tubules are lined by cuboidal to tall columnar epithelium and have an appearance reminiscent of epididymal tubules. These tubules are recognized as being remnants of mesonephric ducts.

**Recommendation:** Ovary - Mesonephric duct remnant should always be diagnosed but need not be graded.

### Reference:

Dixon D, Alison R, Bach U, Colman K, Foley GL, Harleman JH, Hawarth R, Herbert R, Heuser A, Long G, Mirsky M, Regan K, Van Esch E, Westwood FR, Vidal J, Yoshida M. 2014. Nonproliferative and proliferative lesions of the rat and mouse female reproductive system (INHAND). *J Toxicol Pathol* 27(suppl):1S-107S.

Full Text: <http://www.ncbi.nlm.nih.gov/pmc/articles/PMC4253081/>



# NTP Nonneoplastic Lesion Atlas

## *Ovary – Mesonephric Duct Remnant*

### **Authors:**

Gabrielle Willson, BVMS, DipRCPath, FRCPath, MRCVS  
Senior Pathologist  
Experimental Pathology Laboratories, Inc.  
Research Triangle Park, NC

Karen Y. Cimon, DVM, MS  
Senior Pathologist  
Experimental Pathology Laboratories, Inc.  
Research Triangle Park, NC