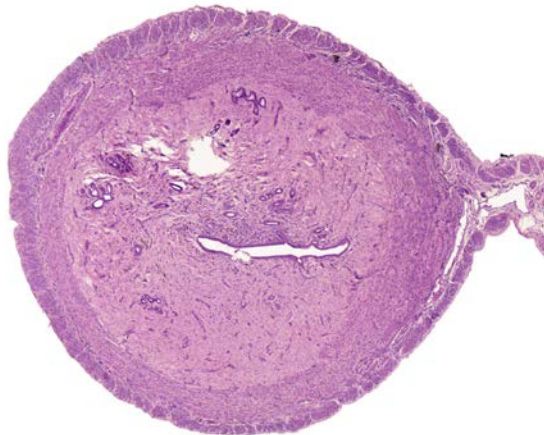


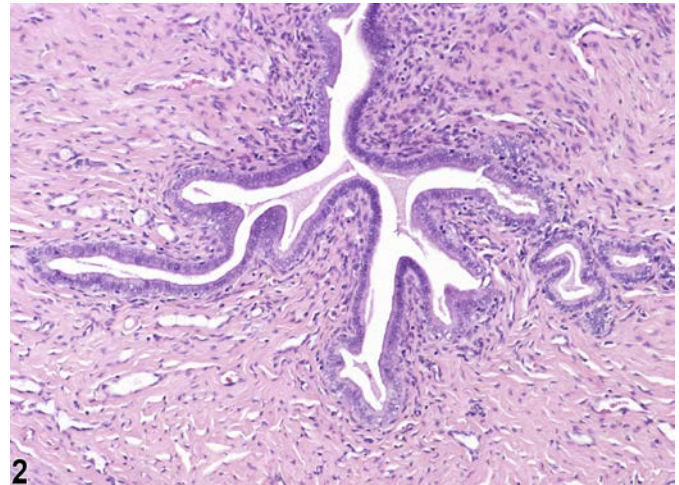


NTP Nonneoplastic Lesion Atlas

Uterus – Hyperplasia, Stromal



1



2

Figure Legend: **Figure 1** Uterus - Hyperplasia, Stromal in a female F344/N rat from a chronic study. There is stromal hyperplasia of the endometrium with concomitant thickening of uterine wall. **Figure 2** Uterus - Hyperplasia, Stromal in a female F344/N rat from a chronic study. There is an increase in the stromal component of the endometrium.

Comment: Stromal hyperplasia is characterized as a general increase in stromal tissue, smooth muscle, and connective tissue resulting in an increase in myometrial thickness (Figure 1 and Figure 2). This may result in gross enlargement of the uterus.

Recommendation: Uterus - Hyperplasia, Stromal should be diagnosed and assigned a grade whenever present.

References:

National Toxicology Program. 1999. NTP TR-485. Toxicology and Carcinogenesis Studies of Oxymetholone (CAS No. 434-07-01) in F344/N Rats and Toxicology Studies of Oxymetholone in B6C3F1 Mice (Gavage Studies). NTP, Research Triangle Park, NC.
Abstract: <http://ntp.niehs.nih.gov/go/9771>

National Toxicology Program. 2014. NTP TR-584. Toxicology Studies of Indole-3-Carbinol (CAS No. 700-06-1) in F344/N Rats and B6C3F1 Mice and Toxicology and Carcinogenesis Studies of Indole-3-Carbinol in Harlan Sprague Dawley Rats and B6C3F1/N Mice (Gavage Studies). NTP, Research Triangle Park, NC.
Abstract: <http://ntp.niehs.nih.gov/go/41482>



NTP Nonneoplastic Lesion Atlas

Uterus – Hyperplasia, Stromal

Authors:

Gabrielle Willson, BVMS, DipRCPath, FRCPath, MRCVS
Senior Pathologist
Experimental Pathology Laboratories, Inc.
Research Triangle Park, NC

Karen Y. Cimon, DVM, MS
Senior Pathologist
Experimental Pathology Laboratories, Inc.
Research Triangle Park, NC