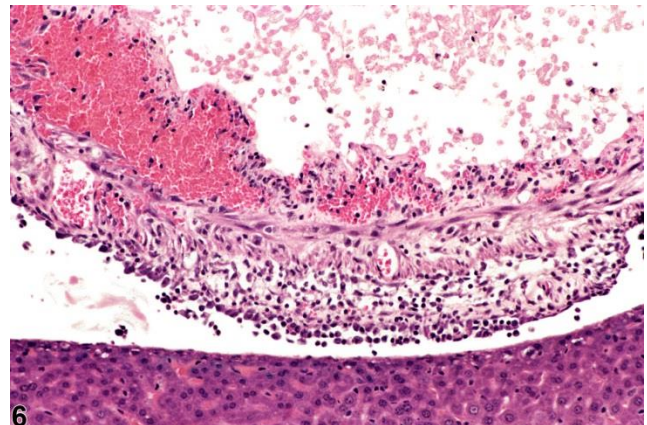
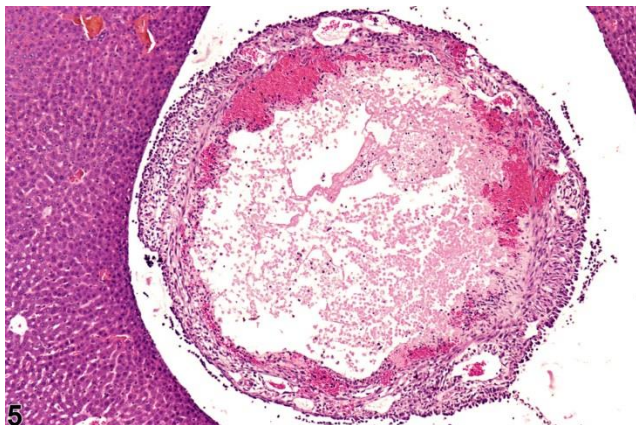
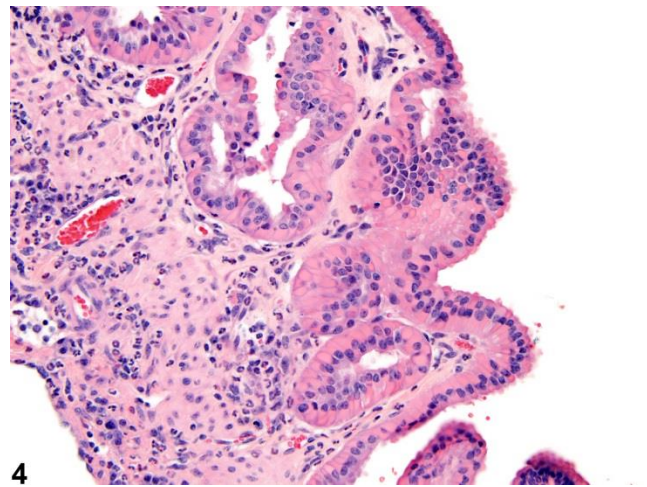
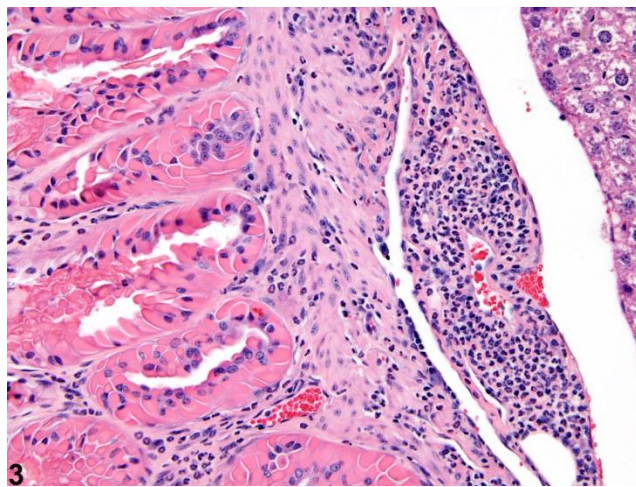
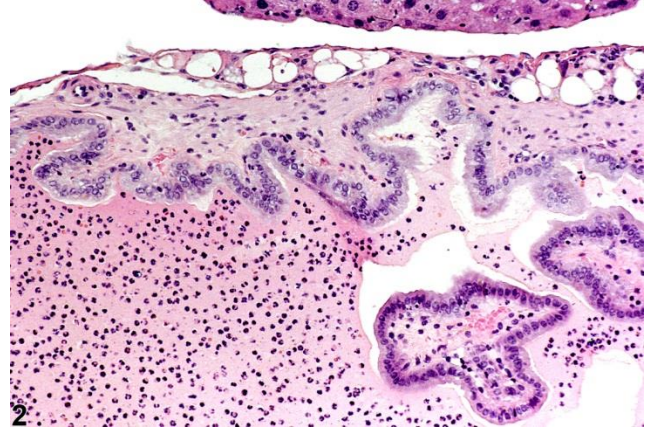
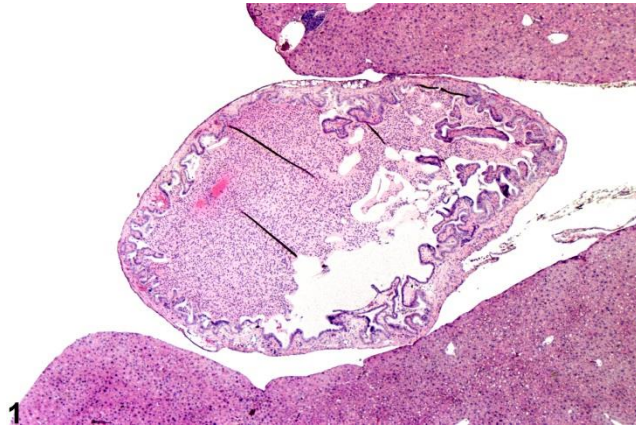


NTP Nonneoplastic Lesion Atlas

Gallbladder – Inflammation





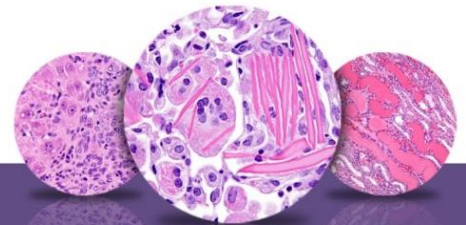
NTP Nonneoplastic Lesion Atlas

Gallbladder – Inflammation

Figure Legend: **Figure 1** Gallbladder inflammation in a female B6C3F1 mouse from a chronic study. **Figure 2** Gallbladder inflammation in a female B6C3F1 mouse from a chronic study (higher magnification of Figure 1). **Figure 3** Gallbladder inflammation in a male B6C3F1 mouse from a chronic study. **Figure 4** Gallbladder inflammation in a male B6C3F1 mouse from a chronic study. **Figure 5** Gallbladder inflammation in a female B6C3F1 mouse from an acute study. **Figure 6** Gallbladder inflammation in a female B6C3F1 mouse from an acute study (higher magnification of Figure 5).

Comment: Inflammation of the gallbladder may involve acute inflammatory cell infiltrates in the lumen (Figure 1 and Figure 2), but more commonly inflammatory infiltration occurs primarily in the gallbladder wall and is accompanied by hyperplasia of the mucosal lining. Figure 3 and Figure 4 show dense cytoplasmic hyaline deposits in the hyperplastic epithelial lining of the gall bladder. Inflammation of the gallbladder (cholecystitis) may be associated with mucosal ulcers or erosions and hemorrhage (Figure 5 and Figure 6). Cholecystitis is more commonly seen in older mice.

Recommendation: Inflammation of the gallbladder should be diagnosed whenever present and given a severity grade. A modifier describing the character of the inflammation (i.e., acute, suppurative, chronic, chronic active, or granulomatous) should be included in the diagnosis (for a description of these modifiers, see "[Liver – Inflammation](#)"). The character of the inflammation and any other morphologic features should also be described in the pathology narrative. Accompanying lesions, such as ulceration or hyaline droplet accumulation, should be diagnosed separately if sufficiently prominent.



NTP Nonneoplastic Lesion Atlas

Gallbladder – Inflammation

References:

Greaves P. 2007. Histopathology of Preclinical Toxicity Studies: Interpretation and Relevance in Drug Safety Evaluation, 3rd ed. Elsevier, Amsterdam.

Abstract: <http://www.sciencedirect.com/science/book/9780444527714>

Harada T, Enomoto A, Boorman GA, Maronpot RR. 1999. Liver and gallbladder. In: Pathology of the Mouse: Reference and Atlas (Maronpot RR, Boorman GA, Gaul BW, eds). Cache River Press, Vienna, IL, 119–183.

Abstract: <http://www.cacheriverpress.com/books/pathmouse.htm>

Thoolen B, Maronpot RR, Harada T, Nyska A, Rousseaux C, Nolte T, Malarkey D, Kaufmann W, Kutter K, Deschl U, Nakae D, Gregson R, Winlove M, Brix A, Singl B, Belpoggi F, Ward JM. 2010. Hepatobiliary lesion nomenclature and diagnostic criteria for lesions in rats and mice (INHAND). *Toxicol Pathol* 38:5S–81S.

Full-Text: http://tpx.sagepub.com/content/38/7_suppl/5S.full

Author:

Robert R. Maronpot, DVM, MS, MPH, DACVP, DABT, FIATP
Senior Pathologist
Experimental Pathology Laboratories, Inc.
Research Triangle Park, NC