

NTP Nonneoplastic Lesion Atlas

Coagulating Gland – Introduction

Accessory sex organs in the male reproductive system, in addition to the prostate, include the seminal vesicles, preputial glands, vas deferens, and penis. These tissues can exhibit direct and indirect (often hormonal) pleiotropic pathologic responses. A change in one reproductive tissue is often accompanied by changes in other reproductive tissues. The majority of the male reproductive tissues are paired, allowing identification of unilateral versus bilateral responses. Artifacts are rare.

Information on the following lesions is available in this section:

Coagulating gland - Atrophy

Coagulating gland - Dilation, Acinar

Coagulating gland - Hyperplasia

Coagulating gland - Inflammation

Click the tabs in the left-hand column.

References:

Creasy DM, Foster P. 1991. Male reproductive system. In: Handbook of Toxicologic Pathology (Haschek E, Rousseaux C, eds). Academic Press, New York, 829-889.

Abstract: <http://www.sciencedirect.com/science/book/9780123302151>

Creasy D, Bube A, de Rijk E, Kandori H, Kuwahara M, Masson R, Nolte T, Reams R, Regan K, Rehm S, Rogerson P, Whitney K. 2012. Proliferative and nonproliferative lesions of the rat and mouse male reproductive system. Toxicol Pathol 40:40S-121S.

Abstract: <http://www.ncbi.nlm.nih.gov/pubmed/22949412>

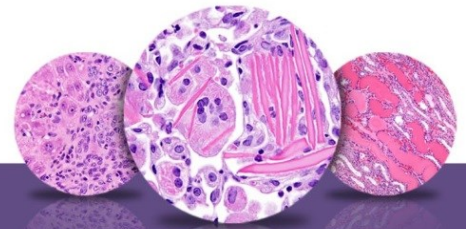
Authors:

Dianne M. Creasy, PhD, Dip RCPATH, FRCPath
Dianne Creasy Consulting LLC
Pipersville, PA

Robert R. Maronpot, DVM, MS, MPH, DACVP, DABT, FIATP
Senior Pathologist
Experimental Pathology Laboratories, Inc.
Research Triangle Park, NC



National Toxicology Program
U.S. Department of Health and Human Services



NTP Nonneoplastic Lesion Atlas

Coagulating Gland – Introduction

Authors:

Dipak K. Giri, DVM, PHD, DACVP
Toxicologic Pathologist
Integrated Laboratory Systems, Inc.
Research Triangle Park, NC