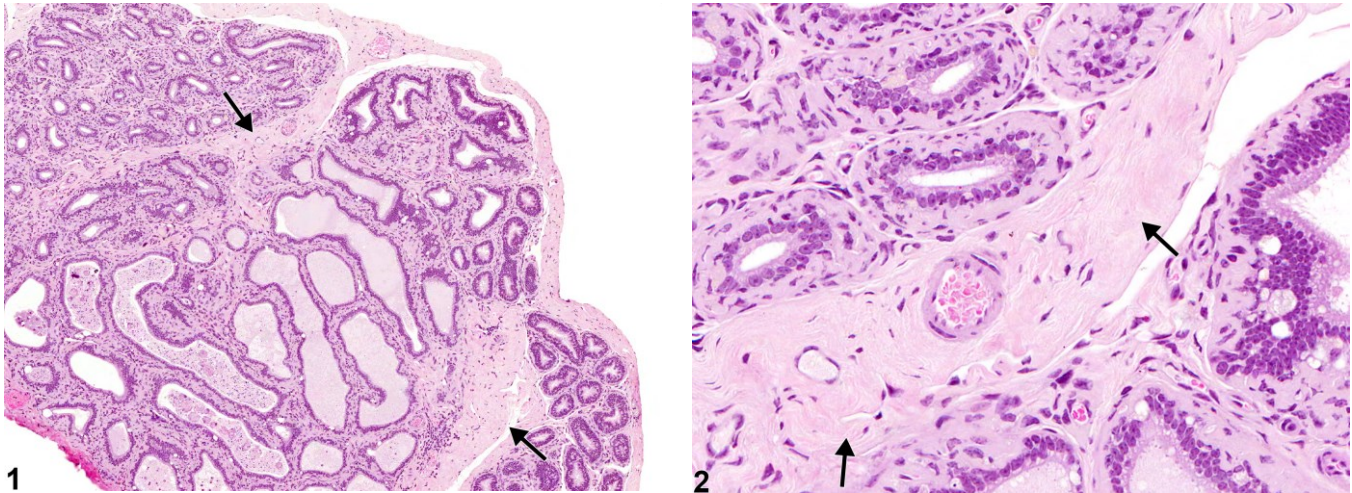


# NTP Nonneoplastic Lesion Atlas

## *Epididymis – Amyloid*



**Figure Legend:** **Figure 1** Epididymis - Amyloid. Amyloid deposits in the interstitium (arrows) in a male B6C3F1 mouse from a chronic study. **Figure 2** Epididymis - Amyloid. Higher magnification of Figure 1. Amyloid deposits in the interstitium (arrows) in a male B6C3F1 mouse from a chronic study.

**Comment:** Amyloidosis is an age-related, incidental background finding most commonly seen in mice. It is generally a systemic condition, but the epididymis is a common site for deposition. It appears as pale, eosinophilic extracellular material that has a green birefringence under polarized light when stained with Congo red.

**Recommendation:** Amyloid should be recorded and graded and should be discussed in the pathology narrative if the incidence and/or severity appear to be related to chemical administration. Associated or secondary lesions need not be diagnosed unless warranted by their severity.

**Reference:**

Radovsky A, Mitsumori K, Chapin RE. 1999. Male reproductive tract. In: Pathology of the Mouse: Reference and Atlas (Maronpot RR, Boorman GA, Gaul BW, eds). Cache River Press, Vienna, IL, 381-407.

Abstract: <http://www.cacheriverpress.com/books/pathmouse.htm>



# NTP Nonneoplastic Lesion Atlas

## *Epididymis – Amyloid*

### **Authors:**

Dianne M. Creasy, PhD, Dip RCPATH, FRCPath  
Dianne Creasy Consulting LLC  
Pipersville, PA

Robert R. Maronpot, DVM, MS, MPH, DACVP, DABT, FIATP  
Senior Pathologist  
Experimental Pathology Laboratories, Inc.  
Research Triangle Park, NC

Dipak K. Giri, DVM, PHD, DACVP  
Toxicologic Pathologist  
Integrated Laboratory Systems, Inc.  
Research Triangle Park, NC