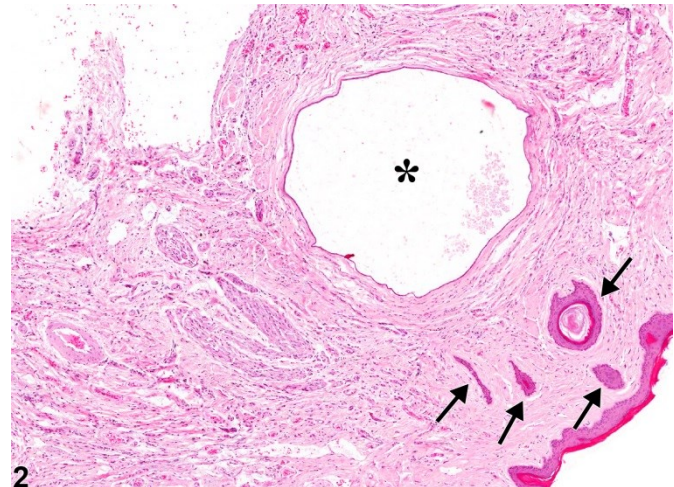


NTP Nonneoplastic Lesion Atlas

Penis – Fibrosis



1



2

Figure Legend: **Figure 1** Penis - Fibrosis. The large space (asterisk) is an artifact. The urethra is markedly dilated (arrow) in a male B6C3F1 mouse from a chronic study. **Figure 2** Penis - Fibrosis. Higher magnification of Figure 1 showing the dilated urethra (asterisk) lined by flattened epithelium and pieces of stratified squamous epithelium trapped in the fibrotic reaction (arrows) in a male B6C3F1 mouse from a chronic study.

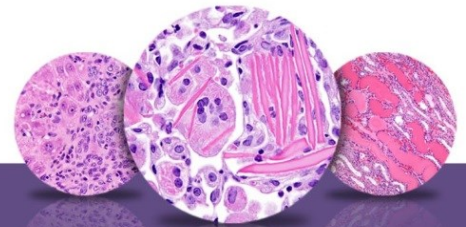
Comments: Fibrosis of the penis is characterized by abundant fibroblasts with collagen deposition that expands the tissue surrounding the penile urethra (Figure 1 and Figure 2). Penile fibrosis is uncommon, and causal association with chemical agents has not been established.

Recommendation: This lesion should be diagnosed and given a severity grade.

Authors:

Dianne M. Creasy, PhD, Dip RCPATH, FRCPath
Dianne Creasy Consulting LLC
Pipersville, PA

Robert R. Maronpot, DVM, MS, MPH, DACVP, DABT, FIATP
Senior Pathologist
Experimental Pathology Laboratories, Inc.
Research Triangle Park, NC



NTP Nonneoplastic Lesion Atlas

Penis – Fibrosis

Authors:

Dipak K. Giri, DVM, PHD, DACVP
Toxicologic Pathologist
Integrated Laboratory Systems, Inc.
Research Triangle Park, NC