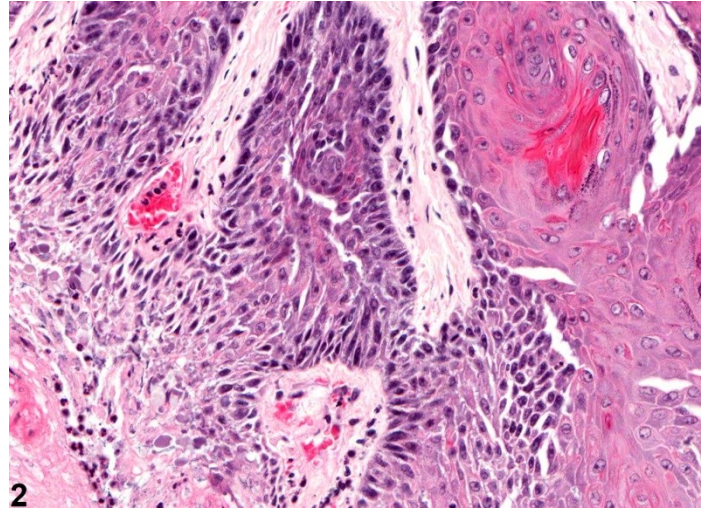


# NTP Nonneoplastic Lesion Atlas

## Penis, Epithelium – Hyperplasia



**Figure Legend:** **Figure 1** Penis, Epithelium - Hyperplasia. Arrow indicates papillary proliferation of squamous epithelium in a male B6C3F1 mouse from a chronic study. **Figure 2** Penis, Epithelium - Hyperplasia. Higher magnification of Figure 1 showing the hyperplastic squamous epithelium in a male B6C3F1 mouse from a chronic study.

**Comments:** Hyperplasia of the mucosa is characterized by proliferation of squamous epithelium in the form of papillary folds (arrow, Figure 1). It is an uncommon incidental finding and is unlikely to be associated with chemical administration.

**Recommendation:** This lesion should be diagnosed and given a severity grade.

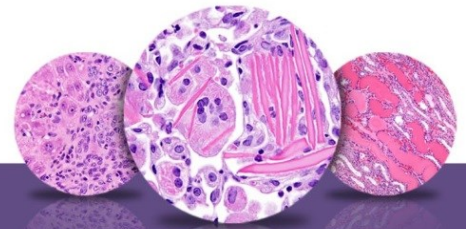
### Authors:

Dianne M. Creasy, PhD, Dip RCPATH, FRCPath  
Dianne Creasy Consulting LLC  
Pipersville, PA

Robert R. Maronpot, DVM, MS, MPH, DACVP, DABT, FIATP  
Senior Pathologist  
Experimental Pathology Laboratories, Inc.  
Research Triangle Park, NC



National Toxicology Program  
U.S. Department of Health and Human Services



# NTP Nonneoplastic Lesion Atlas

## *Penis, Epithelium – Hyperplasia*

### **Authors:**

Dipak K. Giri, DVM, PHD, DACVP  
Toxicologic Pathologist  
Integrated Laboratory Systems, Inc.  
Research Triangle Park, NC