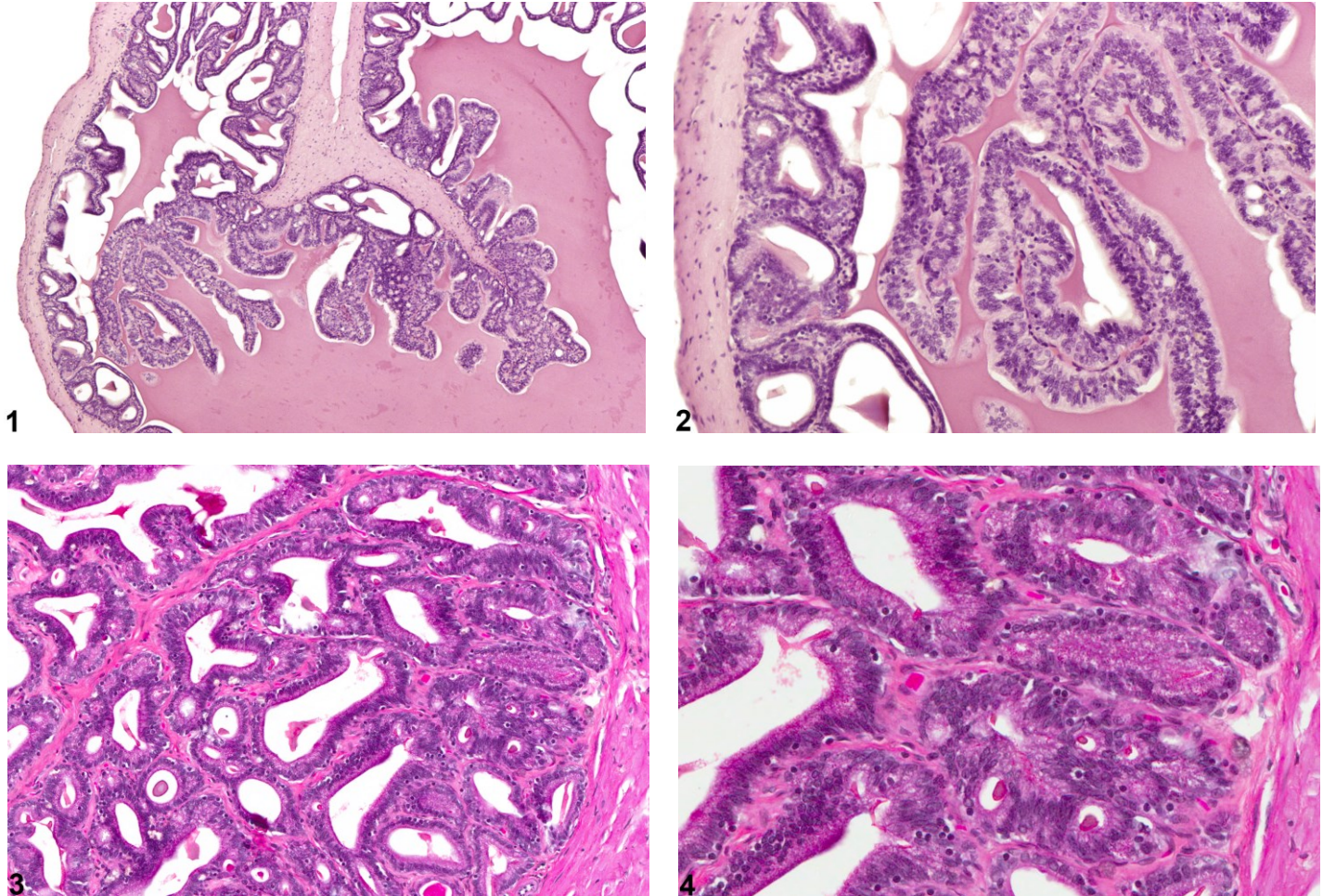


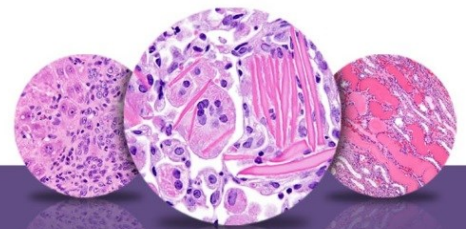
# NTP Nonneoplastic Lesion Atlas

## Seminal Vesicle, Epithelium – Hyperplasia



**Figure Legend:** **Figure 1** Seminal Vesicle, Epithelium - Hyperplasia. Hyperplasia of seminal vesicle epithelium in a male F344/N rat from a chronic study. **Figure 2** Seminal Vesicle, Epithelium - Hyperplasia. Higher magnification of Figure 1. Hyperplasia of seminal vesicle epithelium in a male F344/N rat from a chronic study. **Figure 3** Seminal Vesicle, Epithelium - Hyperplasia. Hyperplasia of seminal vesicle epithelium in a male F344/N rat from a chronic study. **Figure 4** Seminal Vesicle, Epithelium - Hyperplasia. Higher magnification of Figure 3. Hyperplasia of seminal vesicle epithelium in a male F344/N rat from a chronic study.

**Comment:** Hyperplasia of the seminal vesicle is characterized by an increase in the number of glandular epithelial cells. The proliferating epithelium may form papillary structures with supporting stroma and with extension into the glandular lumen (Figure 1 and Figure 2) or a reticular pattern/cribriform pattern (Figure 3 and Figure 4). In both situations, there is nuclear crowding,



# NTP Nonneoplastic Lesion Atlas

## *Seminal Vesicle, Epithelium – Hyperplasia*

occasional mitotic figures, piling up, and slight basophilia of the hyperplastic epithelium. It is important to distinguish hyperplasia from glandular collapse secondary to reduced luminal secretion. Seminal vesicle hyperplasia in rats has been reported following exposure to methylnitrosourea in the presence of either ethinyl estradiol or testosterone. In contrast to hyperplasia, seminal vesicle adenomas form well-delineated proliferative growths with epithelial crowding, loss of normal polarity, and compression of surrounding tissue.

**Recommendation:** Hyperplasia should be diagnosed and graded. If both seminal vesicles are involved, the diagnosis should be qualified as bilateral and given a severity grade based on the more severely affected seminal vesicle.

### References:

Boorman GA, Elwell MR, Mitsumori K. 1990. Male accessory sex glands, penis, and scrotum. In: Pathology of the Fischer Rat: Reference and Atlas (Boorman GA, Eustis SL, Elwell MR, Montgomery CA, MacKenzie WF, eds). Academic Press, San Diego, 419-428.

Abstract: <http://www.ncbi.nlm.nih.gov/nlmcatalog/9002563>

Bosland MC. 1992. Lesions in the male accessory glands and penis. In: Pathobiology of the Aging Rat, Vol 1 (Mohr U, Dungworth DL, Capen CC, eds). ILSI Press, Washington, DC, 443-467.

Abstract: <http://catalog.hathitrust.org/Record/008994685>

Creasy D, Bube A, de Rijk E, Kandori H, Kuwahara M, Masson R, Nolte T, Reams R, Regan K, Rehm S, Rogerson P, Whitney K. 2012. Proliferative and nonproliferative lesions of the rat and mouse male reproductive system. Toxicol Pathol 40:40S-121S.

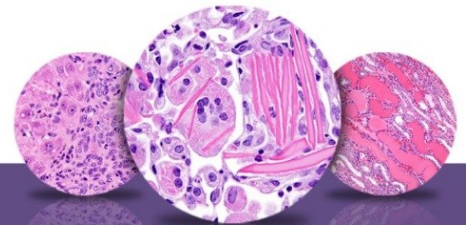
Abstract: <http://www.ncbi.nlm.nih.gov/pubmed/22949412>

Gordon LR, Majka JA, Boorman GA. 1996. Spontaneous nonneoplastic and neoplastic lesions and experimentally induced neoplasms of the testes and accessory sex glands. In: Pathobiology of the Aging Mouse, Vol 1 (Mohr U, Dungworth DL, Capen CC, Carlton WW, Sundberg JP, Ward JM, eds). ILSI Press, Washington, DC, 421-441.

Abstract: <http://catalog.hathitrust.org/Record/008994685>

Radovsky A, Mitsumori K, Chapin RE. 1999. Male reproductive tract. In: Pathology of the Mouse: Reference and Atlas (Maronpot RR, Boorman GA, Gaul BW, eds). Cache River Press, Vienna, IL, 381-407.

Abstract: <http://www.cacheriverpress.com/books/pathmouse.htm>



# NTP Nonneoplastic Lesion Atlas

## *Seminal Vesicle, Epithelium – Hyperplasia*

### References:

Suwa T, Nyska A, Peckham JC, Hailey JR, Mahler JF, Haseman JK, Maronpot RR. 2001. A retrospective analysis of background lesions and tissue accountability for male accessory sex organs in Fischer-344 rats. *Toxicol Pathol* 29(4):467-478.

Abstract: <http://www.ncbi.nlm.nih.gov/pubmed/11560252>

Suwa T, Nyska A, Haseman JK, Mahler JF, Maronpot RR. 2002. Spontaneous lesions in control B6C3F1 mice and recommended sectioning of male accessory sex organs. *Toxicol Pathol* 30(2):228-234.

Abstract: <http://www.ncbi.nlm.nih.gov/pubmed/11950166>

### Authors:

Dianne M. Creasy, PhD, Dip RCPATH, FRCPath  
Dianne Creasy Consulting LLC  
Pipersville, PA

Robert R. Maronpot, DVM, MS, MPH, DACVP, DABT, FIATP  
Senior Pathologist  
Experimental Pathology Laboratories, Inc.  
Research Triangle Park, NC

Dipak K. Giri, DVM, PhD, DACVP  
Toxicologic Pathologist  
Integrated Laboratory Systems, Inc.  
Research Triangle Park, NC