

NTP Nonneoplastic Lesion Atlas

Urinary bladder – Mineralization

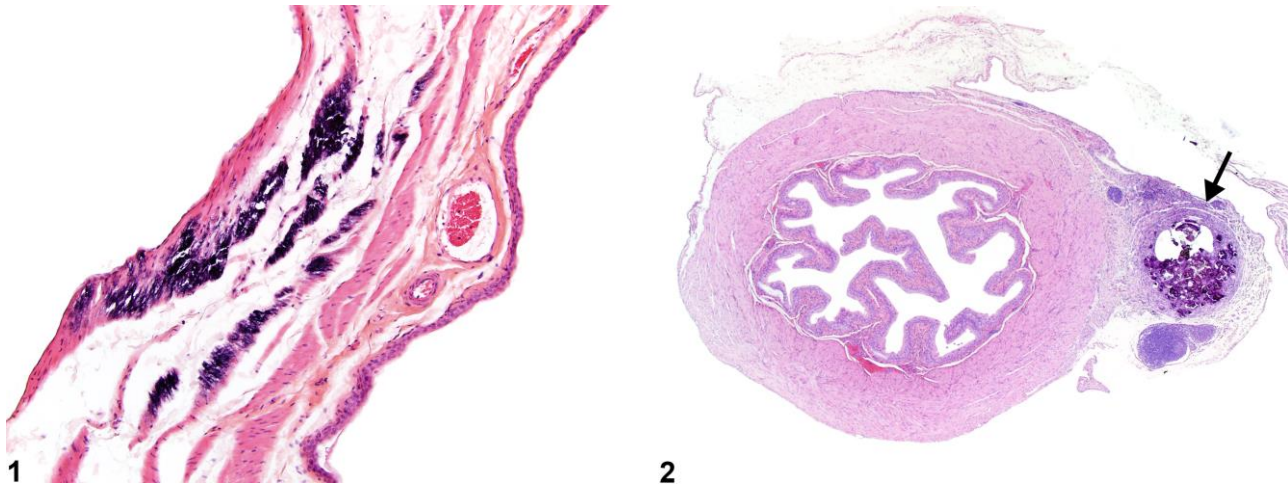


Figure Legend: **Figure 1** Focal basophilic deposits of serosal mineralization in a male F344/N rat from a chronic study. **Figure 2** Focal mineralization (arrow) of the bladder wall in a female B6C3F1 mouse from a subchronic study.

Comment: Mineralization occurs as densely basophilic, granular material (Figure 1 and Figure 2). It usually involves the muscle wall of the urinary bladder. Dystrophic mineralization may be seen secondary to a variety of causes, especially in areas of necrosis. Metastatic mineralization is uncommon in the rodent bladder.

Recommendation: Mineralization should be diagnosed and given a severity grade when seen in the absence of other lesions (e.g., metastatic mineralization) or, if it is secondary to another process (e.g., dystrophic mineralization), when it is a significant component of the lesion.

Reference:

Frazier KS, Seely JC, Hard GC, Betton G, Burnett R, Nakatsuji S, Nishikawa A, Durchfeld-Meyer B, Bube A. 2012. Proliferative and non-proliferative lesions in the rat and mouse urinary system. *Toxicol Pathol* 40:14S–86S.
Abstract: <http://www.ncbi.nlm.nih.gov/pubmed/22637735>



NTP Nonneoplastic Lesion Atlas

Urinary bladder – Mineralization

Authors:

John Curtis Seely, DVM, DACVP
Senior Pathologist
Experimental Pathology Laboratories, Inc.
Research Triangle Park, NC

Abraham Nyska, DVM, Diplomate ECVF, Fellow IATP
Expert in Toxicologic Pathology
Visiting Full Professor of Pathology
Sackler School of Medicine, Tel Aviv University
Timrat Israel