



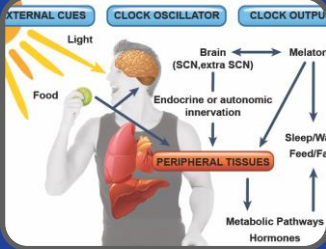
Substance Profiles

Ruth Lunn, DrPH
Office of the Report on Carcinogens (RoC)
National Institute of Environmental Health Sciences

Draft RoC Monograph on Night Shift Work and Light at Night
Peer Review Meeting
5 October 2018



- NTP's preliminary recommendation of the listing status of the substance.
- Summary of scientific evidence key to reaching the listing recommendation written in language for the general public.
- Information on properties, use, production, and exposure.
- Current federal regulations and guidelines to reduce exposure to the substance.
- If the listing status is approved by the Secretary of Department of Health and Human Services, the substance profile becomes a part of the next edition of the RoC.



Introduction



Persistent Night Shift work



Certain lighting Conditions



Clarification questions?



Please address the following questions for each profile and topic

- Comment on whether the information on each topic is clear and technically accurate.
- Comment on whether the substance profile highlights the information for each topic that is considered key to reaching the listing recommendation.

Profiles and topics

- Introduction
- Night shift work substance profile
 - Carcinogenicity
 - Characteristics and exposure
- Light at night substance profile
 - Carcinogenicity
 - Characteristics and exposure