

Title:

Mouse Specific Lung Tumors from cyp2f2-Mediated Cytotoxic Metabolism: An Endpoint/Toxic Response Where Data from Multiple Chemicals Converge to Support a Mode of Action

Authors:

George Cruzan, ToxWorks, 1153 Roadstown Road, Bridgeton, NJ 08302

James Bus, The Dow Chemical Company, Midland, MI 48674

Ralph Gingell, Shell Oil Company, One Shell Plaza, Houston, Texas 77002

Gary Carlson, School of Health Sciences, Purdue University, West Lafayette, Indiana 47907

## Abstract

It is proposed that metabolism of several structurally-related chemicals by CYP2F isoforms of the cytochromes P450 family results in cytotoxicity in organs high in CYP2F; namely, cyp2f2 in nasal and lung tissue in mice and cyp2f4 in nasal tissue in rats. In mice, the resultant cytotoxicity and subsequent regenerative hyperplasia leads to an increase in lung tumors that are mostly benign and are not life shortening. A complete picture of the mode of action has not been developed in any one model compound, but is synthesized using data from several chemicals. For coumarin, naphthalene, and styrene, inhibition of toxicity with inhibition of cyp2f2 has been demonstrated. Rat cyp2f4 appears to be equally active in metabolizing these chemicals; however, cyp2f4 occurs to a much lower extent in rat Clara cells and levels of metabolites produced are not sufficient to cause cytotoxicity. Human lungs contain far fewer of Clara cells than rats or mice, and human lung microsomes failed to, or only marginally, metabolize these compounds. In addition, the human lung differs markedly from the mouse lung in the morphology of its Clara cells, which make humans much less sensitive than mice to toxicity due to reactive metabolites. The absence of a role for cyp2e1 metabolites (alkyl oxidation) in mouse pulmonary effects was demonstrated by the lack of protection from styrene toxicity by cyp2e1 inhibitor, or reduction of toxicity in cyp2e1-knockout mice. The chemicals used as examples of this mode of action generally are negative in standard genotoxicity assays. However, the more assays that have been conducted on a chemical, the more likely that some individual assays were positive. The examples are generally negative in the Ames assay; two were tested in mouse lymphoma with mixed results. *In vitro* chromosome aberrations or micronuclei were assayed in 6 chemicals; half were negative. *In vivo* chromosome aberrations or micronucleus were tested in 7 of the 8 chemicals; all were negative. Sister chromatid exchange (SCE) was positive in all 4 chemicals tested *in vitro* and in the only one tested *in vivo*. Apart from SCE, no consistent pattern in genotoxicity results was found among these chemicals.

Thus, while lung tumors from bronchiolar cell cytotoxicity is theoretically possible in humans, it is unlikely that metabolism by CYP2F1 would produce sufficient metabolites in human lungs. Therefore, it is unlikely chemicals that cause mouse lung tumors via cyp2f2 metabolism will cause lung tumors in humans.

## **Introduction**

In 2005, the US EPA published revised Cancer Risk Assessment Guidelines. The Guidelines emphasize collection of all relevant data on the mode(s) of action of tumor formation in experimental animals, and an evaluation of their relevance to humans. The Guidelines provide a framework for evaluating modes of action (Section 2.4). In addition, other institutions have developed frameworks to organize datasets to better inform mode of action evaluations (Boobis et al., 2006; Seed et al., 2005). Mode of action is defined as identification of the key biological (precursor) events leading to adverse toxicities including cancer (EPA, 2005)

The EPA Guidelines emphasize invoking default assumptions only when there is insufficient data to explain a mode of action. A major uncertainty in the application of the Guidelines is deciding how much data are needed to establish a mode of action vs. reliance on pre-set default assumptions (Guyton et al, 2008; Guzelian et al., 2007). It is generally understood that mode of action evaluations are deliberately focused on identifying the key biological event(s) driving expression of toxicity. However, establishing the quantity and quality of data necessary to fulfill criteria for appropriate implementation of mode of action frameworks nonetheless remains a challenge. Several approaches recently have been suggested to facilitate weight-of-evidence data evaluations of potentially complex datasets (Rhomberg, 2007; Guzelian et al., 2005; Weed, 2005).

Reliance on the best understanding of the data, through weight-of-evidence approaches to identify key mode of action events, appears to represent the intent of the EPA Guidelines. The IPCS has expanded this framework to include evaluation of the adequacy to explain the mode of action in the animal model, the qualitative applicability to humans, and the quantitative relevance to human risk (Boobis et al., 2006).

Few examples of mode of action evaluations have been published (Gift, 2005; Boobis et al., 2006; Guzelian, 2007). For most of these evaluations, the spectrum of data considered was largely restricted to data specifically available for the chemical under evaluation. However, it is

clearly recognized that for some of the established modes of action, such as  $\alpha$ -2<sub>u</sub>-globulin-mediated male rat kidney toxicity (US EPA, 1991), data on the key event(s) from multiple chemicals greatly informed scientific and regulatory acceptance of the proposed modes of action. This mode of action has a single and early key event which controls the initiation of downstream events leading to expression of toxicity (binding of chemicals or metabolite(s) to the male rat-specific protein  $\alpha$ -2<sub>u</sub>-globulin).

If available, use of toxicity and mode of action information from multiple structurally-related chemicals sharing similar interspecies toxicity responses greatly facilitates evaluation of the role(s) of key event(s) controlling manifestation of toxicity (US EPA, 1991). For  $\alpha$ -2<sub>u</sub>-globulin-mediated male rat kidney toxicity and neoplasia, the gate is “open” only for the sensitive sex and species (male rats).

A growing body of data is available indicating that a series of structurally related chemicals (Fig. 1) produce toxicity in the terminal bronchioles and subsequently bronchiolo-alveolar tumors in the lungs of mice, but not in rats (Table 1). These chemicals include coumarin (NTP, 1993a), naphthalene (NTP, 1992, 2000), styrene (Cruzan et al., 1998, 2001), ethylbenzene (NTP, 1999), cumene (NTP, 2007a),  $\alpha$ -methylstyrene (NTP, 2007b), divinylbenzene (NTP, 2007c) and benzofuran (NTP, 1989). Some of these chemicals produced increased tumors at other sites in mice, and may act by multiple MOAs. However, styrene (Cruzan et al., 1998, 2001) and divinylbenzene (NTP, 2007c) induced only lung tumors in mice and no tumors in rats.

Experimental observations across the datasets available for these compounds present an excellent opportunity to develop, evaluate and support a unifying mode of action hypothesis supporting the species-specific lung toxicity and carcinogenicity of this series of compounds. Not surprisingly, the extent of mode of action data for each of these chemicals is varied; some endpoints have been examined in more than one chemical, but few endpoints have been examined in all of the chemicals. However, the cumulative data available from the range of chemicals have contributed to an understanding of a common mode of action for the selective development of lung toxicity and subsequently tumors in mice. In the following sections, this mode of action is explored using the EPA and IPCS frameworks.

## **A. Postulated MOA for Mouse-Specific Lung Toxicity and Tumorigenicity**

cyp2f2 metabolism of several chemicals in terminal bronchiolar Clara cells in mice results in the generation of cytotoxic metabolites. Initial exposures lead to cytotoxicity in terminal bronchioles, followed by reparative cell replication. On continued exposure, the increased cell replication continues, leading to cellular crowding and then to hyperplasia in the terminal bronchioles. As the hyperplasia continues, it expands into the alveolar ducts. Some of this hyperplasia proceeds to form adenomas in the mouse lung, which has a high spontaneous incidence of adenomas in control mice [Table 1]. A few of the adenomas may progress to carcinomas. The analogous cyp2f4 in rats may be as capable of forming these cytotoxic metabolites; however, rats have much lower levels of cyp2f4 in terminal bronchioles and do not produce sufficient levels of these metabolites to cause cytotoxicity, hyperplasia, or lung tumors. Tissues that are high in CYP2F enzymes (cyp2f2 in mouse lung terminal bronchioles and nasal olfactory epithelium; cyp2f4 in rat nasal olfactory epithelium) develop cytotoxicity from these chemicals, which may or may not progress to tumors. Humans have very small amounts of the orthologous isozyme CYP2F1 in lungs or nasal turbinates. CYP2F1 appears to be much less active, if at all, in metabolizing these compounds. Therefore, no cytotoxicity or lung tumors are expected from human exposures to these chemicals. The key element of the hypothesis is that the lung-specific toxicity of this series of compounds converges on their metabolism to cytotoxic metabolites by mouse cyp2f2, which may differ in both specificity and rate of metabolism compared to rats and humans. This is shown pictorially using styrene as an example in Fig. 2.

## **B. Key events**

Key events in this MOA are: delivery of the chemical to the respiratory system, metabolism in lung, cytotoxicity in terminal bronchioles, cell replication, and tumors.

### *B.1. Delivery of Chemical to the Respiratory System*

The respiratory system (nasal epithelium to alveoli) is the major interface between mammals and airborne chemicals in their environment. Inhalation of these chemicals delivers them directly to the cells lining the airways. Depending on the physico-chemical properties of the substance, at very low concentrations as much as 50% of the inhaled chemical in the airstream can be absorbed in the nose (Morris, 2000). In the presence of CYP metabolism inhibitors, about 10% of styrene is absorbed in the nasal region (Morris, 2000), but with metabolic activity up to 50% of the styrene is removed from the airstream in the upper respiratory tract of mice. These chemicals can also be absorbed directly into the cells of the terminal bronchioles (Clara cells) as well as the alveolar cells. When absorbed into alveolar cells, they pass into the blood capillaries and are distributed systemically in rats and mice, resulting in detectable blood concentrations of the parent compounds (Cruzan et al., 1998, 2001).

For coumarin, naphthalene, styrene, and ethylbenzene, there is good evidence of distribution of the chemical from all routes of exposure to all tissues, including respiratory epithelium. When exposure is by the oral route, first pass metabolism in the liver dramatically reduces the amount of chemical that is distributed to tissues through the blood stream (Sarangapani et al., 2002). However, metabolism and cytotoxicity in lung from oral exposure has been demonstrated for coumarin (NTP, 1993), naphthalene (ref), styrene (Green et al., 2001a), ethylbenzene (Stott et al, 2003), indicating that these chemicals can be absorbed systemically and penetrate all organs after oral administration, and that the lung has a preferential capacity to metabolize systemically available concentrations of these compounds.

Qualitatively, delivery of these chemicals to lung cells does not appear to be species specific. This process is driven by the solubility of the chemicals in the various tissues, which should be approximately the same across species, including man and by blood flow and minute volume, which may affect the quantity of these chemicals delivered to the lungs.

### *B.2. Metabolism in Lung*

Many compounds are metabolized to cytotoxic metabolites by cyp2f2 in the Clara cells of the terminal bronchioles of mouse lung. The metabolite(s) responsible for cytotoxicity from most of these compounds in the terminal bronchioles have not been determined.

*Coumarin*: The major metabolite of coumarin in rats, mice, and humans is 7-hydroxycoumarin. However, coumarin is metabolized by cyp2f2 to coumarin-3,4-epoxide in mouse lung, which rearranges to 2-hydroxyphenylacetaldehyde (Born et al., 2002) and causes mouse lung cytotoxicity and lung tumors. Inhibition of cyp2f2 by 5-phenyl-1-pentyne (5P1P) eliminated the bronchiolar cytotoxicity from coumarin (Born et al., 2002). This metabolism occurs to a much lower extent in rats, which do not develop lung cytotoxicity or lung tumors (Felter et al., 2006). 3,4-Dihydrocoumarin is not capable of forming the 3,4-epoxide and did not induce lung tumors in mice (NTP, 1993b).

*Naphthalene*: Pulmonary microsomes from mice metabolized naphthalene at approximately 8 times the rate of rat microsomes and produced mostly 1R,2S-naphthalene oxide, whereas rat microsomes produced mostly 1S, 2R- naphthalene oxide (Buckpitt et al., 2002). Inhibition of cyp2f2 by 5P1P eliminated the bronchiolar cytotoxicity from naphthalene (Buckpitt et al., 1995). Genter et al. (2006) demonstrated that cyp1a1 and cyp1a2 genes which are inducible by AHR in the mouse respiratory tract do not function to influence naphthalene toxicity, and confirm the results of Phimister et al. (2004) that cyp2f2 bioactivates naphthalene in lung and nasal tissues.

*Styrene*: For styrene, the first step in the major metabolic pathway is oxidation to S-styrene-7,8-oxide; this accounts for at least 80% of the metabolism of styrene in rats and mice (Sumner and Fennell, 1994; Cruzan et al., 2002). It should be noted that oral administration of styrene-7,8-oxide to mice at 275 mg/kg/day did not result in increased lung tumors, even though PBPK models indicate this dose of SO would result in a higher lung level of SO than from metabolism of styrene at 40 ppm by inhalation (Sarangapani et al., 2002). Further, Hofmann et al. (2006) demonstrated that *ex vivo* exposure to styrene in rat lungs at 1000 ppm (non-tumorigenic) produced 2.5 nmol styrene oxide/g lung vs. 0.25 from mouse lungs at styrene concentration of 40 ppm (tumorigenic). This led the authors to conclude that styrene oxide is not the agent responsible for mouse lung cytotoxicity from styrene exposure. In mouse lung, two alternate

metabolic paths are prevalent; one involves formation of R-styrene-7,8-oxide and the other involves oxidation of the benzene ring (Cruzan et al., 2002; Bartels et al., 2005). Using selective inhibitors, Carlson determined that cyp1a, 2b, and 2e1 had little, if any, impact on Clara cell cytotoxicity of styrene, implying they are not involved in metabolic activation of styrene in the lung (Carlson 1997, Carlson et al., 1998). Inhibition of 2e1, or the use of 2e1 knockout mice demonstrated that 2e1 plays some role in the acute liver cytotoxicity of styrene, but has no impact on the lung toxicity (Carlson, 2004; Vogie et al., 2004). In studies of styrene, the inhibition of cyp2f2 by 5-phenyl-1-pentyne (5P1P) inhibited both the lung cytotoxicity and nasal cytotoxicity in CD-1 mice (Green et al., 2001a, b). 4-Vinylphenol (4VP, 4-hydroxystyrene) is a minor urinary metabolite of styrene and has been used as a substrate for further ring-oxidized metabolites of styrene. 4-VP is 10 times as toxic to mouse lung as styrene and 5 times as toxic as styrene-7,8-oxide (Carlson et al., 2002). Inhibition of cyp2f2 by 5P1P also inhibits the cytotoxicity of 4VP (Carlson, 2002), indicating that there is a subsequent metabolite of 4VP that is responsible for cytotoxicity. The metabolite(s) responsible for cytotoxicity from these compounds in the olfactory epithelium or terminal bronchioles have not been identified.

*Ethylbenzene:* *In vitro* studies examining comparative mouse, rat and human lung and liver microsomal metabolism of ethylbenzene have confirmed extensive metabolism in all three species to alkyl-oxidized metabolites, e.g., 1-phenylethanol (mouse > rat ~ human; Saghir et al., 2006; 2007). 1-Phenylethanol was not pneumotoxic or tumorigenic when tested in high-dose oral subchronic and chronic rat and mouse bioassays (NTP, 1990). No detectable lung toxicity was found from exposure to 1-phenylethanol, 2-phenylethanol, or phenylacetaldehyde in mice (Carlson et al., 2002). Use of GSH-trapping to detect putative cytotoxic catechol and hydroquinone metabolites confirmed the *in vitro* formation of these metabolites in mouse, rat and human liver microsomes, and in mouse and rat, but not human, lung microsomes. Similar to the generation of alkyl-oxidized metabolites, mouse lung microsomes exhibited substantially higher metabolic activity (mouse lung GSH-derived metabolites approximately 10X > rat lung; human lung not detectable; mouse lung GSH metabolites approximately 2X > mouse liver; mouse liver approximately 10X > rat and human liver). Although ring-oxidized metabolites accounted for a relatively small fraction of overall ethylbenzene metabolism, their selective elevation in mouse lung microsomes is nonetheless consistent with the hypothesized mode of action attributing



preferential formation of lung-derived cytotoxic, ring-oxidized metabolites as driving the mouse lung specific toxicity of ethylbenzene. Interestingly, both mouse and rat lung microsomes exhibited decreasing amounts of ring-oxidized metabolite formation with increasing concentrations of ethylbenzene, suggesting the possibility of cytochrome P450 suicide inhibition by reactive ring-oxidized metabolite(s). This observation would also be consistent with the hypothesis of the formation of reactive cytotoxic metabolites in mouse lung. 5P1P inhibition studies are currently in progress. 4-Hydroxyethyl-benzene is the only metabolite of ethylbenzene that has been demonstrated to cause mouse lung cytotoxicity in 3-day studies (Kaufmann et al., 2005).

*Cumene*: In mice exposed to <sup>14</sup>C-cumene, urinary metabolites included 4-(2-hydroxy-2-propyl)phenylsulfate, indicating ring oxidation (Ferguson et al., 2008).

Data on the metabolism of these compounds in human lung tissue are limited because of the difficulty obtaining adequate specimens for testing. However, limited data indicate that these metabolites are either not produced in human lung or are produced to a much lower degree (Vassallo et al., 2004; Buckpitt et al., 1986; Cruzan et al., 2002; Felter et al., 2006). Baldwin et al. (2004) found no detectable CYP2F in any lung subcompartments in rhesus macaque. Thus human lung and nasal cells would not be expected to develop cytotoxicity from these compounds.

### *B. 3. Cytotoxicity*

Short term exposure to coumarin (Born et al., 1998), naphthalene (West et al., 2001), styrene (Cruzan et al. 2002), and ethylbenzene (Stott et al., 2003) all cause cytotoxicity in the terminal bronchioles of mouse lung, but not rat lung (Table 2). The target cells are the Clara cells lining the terminal bronchioles. Toxicity to alveolar cells does not occur. Single gavage doses of 150 and 200 mg/kg coumarin resulted in swelling and necrosis of Clara cells in the terminal bronchioles of male and female B6C3F1 mice (Born et al., 1998). Doses below 150 mg/kg did not cause toxicity. While coumarin caused mouse lung cytotoxicity and lung tumors (NTP, 1993a), dihydrocoumarin did not (NTP, 1993b). Coumarin (NTP, 1993) causes cytotoxicity in

the terminal bronchioles, but since it was administered orally the olfactory epithelium was not examined.

The cytotoxicity from naphthalene is summarized by Buckpitt and coworkers (2002). Briefly, parenteral administration of 50 mg/kg naphthalene results in swelling of the Clara cells (O'Brien et al., 1985); larger doses result in more severe effects, including a loss of apical blebs and decreased endoplasmic reticulum in Clara cells and denuding of Clara cells from the terminal bronchioles. For naphthalene, female mice are more susceptible than males. cyp2f2 bioactivates naphthalene in mouse lung terminal bronchiolar tissue to one or more reactive metabolites that induce cytotoxicity after depleting glutathione (Phimister et al., 2004; Genter et al., 2006). In rats, even at an ip dose of 1600 mg/kg, the Clara cells were apparently normal.

The cytotoxicity of styrene has been summarized by Cruzan et al. (2002, 2005). For styrene, cytotoxicity has been measured by increased cell replication following 3 inhalation (40 and 160 ppm) or ip (100 mg/kg) exposures (Green et al., 2001a; Kaufmann et al., 2005). Similarly, following 3 exposures, styrene metabolites styrene-7,8-oxide (100 mg/kg) and 4-hydroxystyrene (35 mg/kg), produced a greater increase in cell replication than the parent compound styrene (Kaufman et al., 2005). In the chronic mouse study (Cruzan et al., 2001), decreased staining of the Clara cells (an indicator of cytotoxicity) was reported in 50-70% of the mice exposed to 20 ppm for 12, 18 or 24 months and in more than 80% of those exposed to 40, 80, or 160 ppm. Increased cell proliferation has been reported at concentrations of 40 ppm or greater (20 ppm has not been examined). Bronchiolar hyperplasia was seen in a few mice exposed to 40 ppm for 12 months and in most mice exposed to 80 or 160 ppm; by 24 months bronchiolar hyperplasia was seen in up to 40% of the mice exposed to 20 ppm and in more than 75% of those exposed to 40, 80 or 160 ppm (Cruzan et al., 2001). Green and coworkers demonstrated that metabolism of styrene by cyp2f2 is necessary to cause the cytotoxicity (Green et al., 2001a).

Exposure of B6C3F1 mice to tumorigenic 750 ppm ethylbenzene exposures resulted in significantly increased S-phase DNA synthesis in the small airways after 1 week treatment (measured by BrdU incorporation); S-phase synthesis remained elevated after 4 weeks of exposures (non-significant approximate 2X increase; Stott, 2003). In addition, a re-evaluation of

the mouse lung tissues from the ethylbenzene bioassay identified the presence of multifocal bronchiolar/parabronchiolar hyperplasia at the 750 ppm tumorigenic exposure level (Brown, 2000).

Administration of these chemicals results in GSH depletion. Phimister and coworkers (2004) demonstrated that administration of naphthalene resulted in GSH depletion. They further reported that lung GSH depletion precedes cellular injury, that lung GSH is depleted by levels of naphthalene that do not deplete liver GSH, and that liver GSH is not able to maintain lung GSH at normal levels following naphthalene administration. Carlson and coworkers have demonstrated glutathione (GSH) depletion in lung of mice administered 200 mg/kg styrene ip, which lasted through 6 hours, but returned to normal levels by 12 hours (Turner et al., 2005).

#### *B. 4. Cell replication*

The mouse terminal bronchioles respond to the cytotoxic injury by generating replacement Clara cells. Increased cell labeling after short-term exposure has been demonstrated for styrene, naphthalene, ethylbenzene, and coumarin. Long-term exposure results in continued bouts of cytotoxicity and cell replication. Continually elevated cell replication leads to overproduction of Clara cells, leading to cellular crowding, followed by hyperplasia which can eventually extend into alveolar ducts (Cruzan et al., 2001). No increase in cell replication rates have been found in alveolar cells of mouse lungs from any of these compounds. No increase in cell replication rates was found in the lungs of rats exposed to styrene or ethylbenzene.

#### *B. 5. Tumors*

For coumarin (NTP, 1993), naphthalene (NTP, 1992), styrene (Cruzan et al., 2001), ethylbenzene (NTP, 1999), cumene (isopropylbenzene) (NTP, 2007a), alpha-methylstyrene (isopropenylbenzene) (NTP, 2007b), divinylbenzene (NTP, 2007c) and benzofuran (NTP, 1989), lung tumors were increased in mice, but not in rats. Tumors were found in the outer layer of the lung where the terminal bronchioles and alveoli intersect. Tumors generally encompass areas of alveoli and bronchioles and are termed “bronchioloalveolar adenomas” or “alveolarbronchiolar

adenomas”, depending on the pathologist. For all the chemicals in this class, tumors occurred late in life and were not life-shortening; i.e., increased tumors were found only at study termination. In general, the increases were in benign tumors. In the case of styrene, increased lung tumors were found only at the end of the 24-month study, but not at the 12 and 18 month interim sacrifices (Cruzan et al., 2001),.

The incidence of lung tumors was not increased in mice exposed to 3,4-dihydrocoumarin (not able to form 3,4-epoxide), 4-methylstyrene (not able to form 4-hydroxystyrene), mixture of 3- and 4-methylstyrene (vinyltoluene, not able to form 3- or 4-hydroxystyrene), styrene-7,8-oxide, or 1 phenylethanol (side-chain oxidation product of ethylbenzene).

### **C. Adequacy of Evidence of MOA in animals**

#### *C.1. Strength of Association*

Chronic inhalation exposure of ethylbenzene, styrene, naphthalene, cumene,  $\alpha$ -methylstyrene, divinylbenzene, and coumarin have all been shown to increase the incidence of lung tumors among mice, but not rats. Cytotoxicity and increased cell replication have been studied in coumarin, naphthalene, styrene, and ethylbenzene; in mice, all four cause terminal bronchiolar cytotoxicity and increased cell replication at exposure levels comparable to the tumorigenic levels (Table 2). For coumarin, naphthalene, and styrene, it has been demonstrated that inhibition of cyp2f2 inhibits the cytotoxicity and cell replication. Structurally similar chemicals (3,4-dihydrocoumarin, 3-, or 4-methylstyrene) that cannot be oxidized by cyp2f2 to active intermediates did not cause cytotoxicity or mouse lung tumors. Other chemicals have not been tested.

#### *C.2. Consistency of Association*

Cytotoxicity from these chemicals occurs in organs with high levels of CYP2F family. cyp2f2 (mouse) is expressed largely in Clara cells in the lung airways (most notably in the terminal bronchioles) and in the nasal olfactory epithelium, with little or none present in the liver. Extensive research has shown that there is a strong association between CYP2F expression levels

and tissue susceptibility to naphthalene cytotoxicity (Buckpitt et. al., 2002). Styrene (Cruzan et al., 1997, 2001), naphthalene (NTP, 1992), cumene (NTP, 2007a), and alpha-methylstyrene (NTP, 2007b) cause cytotoxicity in the terminal bronchioles and nasal olfactory epithelium in mice. Ethylbenzene causes cytotoxicity in the terminal bronchioles, but not in the nasal olfactory epithelium at the concentrations tested (NTP, 1999). In rats, CYP2F1 is expressed mainly in the nasal olfactory epithelium, with lesser amounts in the lung. Styrene (Cruzan et al., 1997, 1998), naphthalene (NTP, 2000), cumene (NTP, 2007a), and alpha-methylstyrene (NTP, 2007b) cause cytotoxicity in the nasal olfactory epithelium of rats, but not in the lung terminal bronchioles. Ethylbenzene does not cause cytotoxicity in either lung or olfactory epithelium in rats (NTP, 1999). Coumarin does not cause cytotoxicity in rat lung or nasal olfactory epithelium. In humans, CYP2F1 is expressed at very low levels in the lung, much lower than cyp2f4 in the rat. Therefore, it is not surprising that these chemicals have not been reported to cause cytotoxicity in human lung cells.

### *C.3. Specificity of Association*

Mice have a much greater number of Clara cells than do rats, which have a much greater number than humans. In addition, mouse Clara cells have much more cyp2f2 than the amount of cyp2f4 found in rat Clara cells. Human lung Clara cells have barely detectable levels of CYP2F1. Thus mice have the greatest number of target cells for toxicity, and those target cells have the greatest capacity to produce toxic metabolites.

Toxicity in mice occurs in 2 organs which contain high levels of cyp2f2: nasal olfactory mucosa (chronic cytotoxicity, limited cellular replacement, cells replaced with respiratory-like cells), and lung (chronic cytotoxicity, rapid cellular replacement in kind, hyperplasia). Toxicity in both olfactory mucosa and Clara cells is prevented if cyp2f2 is inhibited by 5P1P. In rat lung and liver, with very little cyp2f4, these chemicals are metabolized primarily via CYP2E1. Rat nasal olfactory tissue contains a large amount of cyp2f4, in addition to cyp2e1 (Green, 2001b). In rat nasal olfactory tissue, large amounts of the toxic metabolites from these compounds are formed and cytotoxicity is seen from many of them.

## **D. Qualitative Relevance of the Animal MOA for Humans**

The key events for this mouse lung tumor MOA are presented in Table 2 and Figure 2.

Lung tumors are quite prevalent in humans, mostly related to cigarette smoking. These are thought to arise from bronchiolar cells and may involve cytotoxicity, as well as genotoxicity. This suggests that cytotoxicity in bronchioles of humans from chemicals could contribute to the formation of lung tumors.

The MOA proposes that the toxic effects in mice are due to metabolism by *cyp2f2*. Rats have lower levels of *cyp2f4* in terminal bronchioles and do not produce sufficient metabolites to cause cytotoxicity or lung tumors. Humans have much lower amounts of CYP2F1 and one would expect they would produce much lower levels of cytotoxic metabolites than in mice or even rats. If human CYP2F1 could produce sufficient metabolites from a chemical to produce bronchiolar cell cytotoxicity, it could conceivably lead to lung tumors

#### **E. Quantitative Relevance of the Animal MOA for Humans**

Given that the qualitative impacts of the proposed MOA on tumor outcomes are not fully defined, quantitative differences between mice and humans must also be considered and include: (1) Rodent exposures in the bioassays are orders of magnitude higher than expected human exposure; (2) Mouse lung has a larger fraction than the human lung with respect to Clara cells (Plopper et al., 1980a, b); (3) Rates of metabolism for these chemicals in lung microsomes exhibit clear species differences, with rates in mice being greater than the corresponding rates in humans (Green et al., 2001; Vassallo *et al.*, 2004; Saghir *et al.*, 2006) and (4) Background rates for lung tumors are higher in male mice (~14%) than in humans (~7%, SEER, 2006). Given these species differences, the MOA is assumed to be plausible in humans, but humans are expected to be much less sensitive than mice to the pulmonary effects of these chemicals. Because rat lungs contain more *cyp2f4* than human lungs contain CYP2F1 and rats do not develop cytotoxicity or lung tumors from these chemicals, it is very unlikely that any chemical that causes mouse lung tumors by this MOA and does not cause rat lung tumors will cause human lung tumors.

## **F. Other potential modes of action**

### *F.1 Postulated Alternative MOA: Genotoxicity*

Another mode of action that must be considered is direct genotoxicity. For styrene and divinylbenzene, mouse lung tumors are the only tumorigenic response in rats or mice. For naphthalene, only lung tumors in mice and nasal tumors in rats (also high in CYP2F) were found. For the remaining chemicals of this group, other tumors were increased in mice and/or rats. Finding increased tumors in multiple organs and/or species leads to a suspicion of a genotoxic MOA.

### *F.2. Key Events for Genotoxic MOA*

Interaction with DNA has been demonstrated for some of these chemicals. Low levels of DNA adducts have been reported in rats and mice exposed to styrene, but the levels are not higher in the target species (mouse) or target organ (lung Clara cells) (Boogaard et al., 2000; Cruzan et al., 2002). Adducts of naphthalene to hemoglobin, albumin, and other proteins have been reported (IARC, 2002). Tests for DNA or protein adducts have not been conducted for the other chemicals.

DNA strand breaks, or abasic sites have been found following exposure to styrene (IARC, 1994; 2002) and naphthalene (IARC, 2002). Tests for DNA strand breaks/abasic sites has not performed on the other chemicals.

Standard mutagenicity studies are largely negative (Table 3). Nearly all Ames assays were negative, while mouse lymphoma tests produced 1 negative (ethylbenzene), 1 positive (benzofuran) and 1 equivocal (ethylbenzene) result. Mutations at the hprt locus were negative for cumene in CHO cells and positive or negative for styrene in CHL cells. *In vitro* Unscheduled

DNA synthesis (UDS) assays were mixed for cumene (1 positive, 1 negative) and negative for ethylbenzene.

Positive results in *in vitro* chromosomal aberration assays (Table 3) were reported for styrene and coumarin, while negative results were reported for  $\alpha$ -methylstyrene, ethylbenzene and benzofuran. Positive results in *in vitro* micronucleus assays (Table 3) were reported for styrene and naphthalene; the others have not been tested. Positive results in *in vitro* SCE assays (Table 3) were reported for styrene, naphthalene, benzofuran and  $\alpha$ -methylstyrene; the others have not been tested.

*In vivo* chromosomal aberration assays in laboratory animals (Table 4) are largely negative for styrene (1 positive, 11 negative); none of the others have been tested *in vivo*. *In vivo* micronucleus assays (Table 4) are largely negative for coumarin, styrene, naphthalene, ethylbenzene, cumene,  $\alpha$ -methylstyrene, and divinylbenzene. An *in vivo* unscheduled DNA synthesis (UDS) assay was negative for ethylbenzene. SCE has been examined in laboratory animals only for styrene; 6 assays were positive and 1 was negative (Table 4). Styrene was not genotoxic in mouse lung in the two *in vivo* tests in which it was studied: lung tumor initiation in A/J mice (Brunnemann et al., 2002); chromosomal aberrations in B6C3F1 mice by inhalation (Kligerman et al., 2002).

A large number of studies of genotoxicity endpoints have been reported for reinforced plastics workers (Table 5), who are exposed to styrene in the workplace. No studies of genotoxic endpoints have been conducted in workers exposed primary to the other compounds. The reinforced plastics worker studies are subject to different interpretations. All reviewers agree that there are many studies with small numbers of subjects and/or controls, controls may not be well matched, and techniques may not have followed guidelines. Scott and Preston, 1994, Bonassi et al. 1996, and Henderson and Speit, 2005 concurred that there was not reliable evidence that styrene exposure caused increased micronuclei in these workers. Scott and Preston, 1994 and Henderson and Speit, 2005 concluded that there was no clear evidence of increased chromosomal aberrations in these workers, while Bonassi et al., 1996 concluded that workers exposed above 30 ppm had increased aberrations. IARC (1994) listed 8 studies of chromosomal



aberrations in these workers as positive and 12 as negative, while a recent draft on styrene by the NTP concluded that 4 of these negative studies should be considered positive. Improved industrial hygiene in the reinforced plastics industry further complicates interpreting these studies. Prior to 1980, exposures were normally up to 100 ppm average; improved conditions and the use of respiratory protection have reduced worker exposure to less than 50 ppm. About two-thirds of the chromosomal aberration studies in styrene-exposed workers published before 1990 were negative, while about 50% of those published since 2000 are positive, the opposite of the exposure trend. About half of the studies of SCE in these workers are reported as positive.

### *F.3. Adequacy of Evidence of MOA in animals*

#### *F.3.1. Strength of Association*

Metabolites of several of these chemicals interact with cellular macromolecules including DNA. Only weak associations with mutational endpoints, if any, have been reported in *in vitro* studies and *in vivo* studies in laboratory animals.

#### *F.3.2. Consistency of Association*

The genotoxicity data for these chemicals are inconsistent. There are indications of reactive metabolites that can interact with DNA, and there are some positive results, particularly in *in vitro* studies. However, the *in vivo* studies in using controlled and frequently high exposures to laboratory animals do not indicate mutagenicity or clastogenicity, but there may be increased SCEs. There is no consistent finding in any test of positive genotoxicity results across the chemicals tested.

### *F.4. Qualitative Relevance for of this Proposed Animal MOA for Humans*

If metabolites of these chemicals cause lung tumors in mice via a genotoxic MOA in animals, those metabolites potentially could also cause tumors in humans via the same genotoxic MOA.

### *F.5. Quantitative Relevance of this Proposed Animal MOA for Humans*

Whether the lung tumors are caused by genotoxic reactions or cytotoxic reactions of metabolites, neither will happen in humans unless there is metabolism by CYP2F1. Since human CYP2F1 is barely detectable and for the chemicals studied to date has very little metabolic activity, lung tumors are extremely unlikely in humans.

## **G. Uncertainties, Inconsistencies, and Data Gaps**

### *G.1. Uncertainties*

The mode of action is characterized by the formation of cytotoxic metabolites by cyp2f2 in Clara cells. For coumarin, it is proposed that this metabolite is 2-hydroxyphenylacetaldehyde. Ring oxidized metabolites have been demonstrated to be the only cytotoxic metabolites for ethylbenzene and are much more toxic than side-chain only metabolites for styrene. Further studies on the toxic metabolites from these chemicals may reduce the uncertainty of the qualitative and quantitative relevance of this mode of action for human risk.

Human lung tissue is difficult to obtain and study. Human lung preparations often are from diseased persons and the health status of the samples may be compromised. Further, cytochrome P450 activity of tissue samples or microsomes prepared from them lose their catalytic activity quite rapidly. In addition, CYP2F seems to be located only in Clara cells and humans have fewer Clara cells than mice; thus, when using “general” lung tissue, the activity in human preparations is expected to be lower than in mouse preparations.

The cytotoxic effects of these compounds has been demonstrated primarily in *in vivo* experiments in mice. Limited *in vitro* data have shown toxic effects in Clara cells isolated from mice for styrene and metabolites, but the results are not consistent with the *in vivo* effects (styrene is equally toxic as styrene oxide and 4-vinylphenol). Since these effects occur only at high doses in mice, it does not seem that *in vivo* studies in humans could be designed that would demonstrate any cytotoxicity, in addition to the difficulties of sampling for effects in lung tissue. Further, obtaining healthy human lung tissue to study the cytotoxicity *in vitro* is not likely to occur and there currently is no *in vitro* assay.

Confirmation of the necessity of fmetabolism to the cytotoxicity of these compounds may be obtained by administration to cyp2f2-knockout mice. Development of these cyp2f2-knockout mice is currently underway.

While the metabolism and cytotoxicity of these compounds cannot be studied in humans, there is a program underway to develop mice where the mouse cyp2f2 gene has been replaced by the human CYP2F1. These mice should be susceptible to cytotoxicity if sufficient metabolites are formed. Thus the lack of cytotoxicity in these mice would provide further evidence that humans are not sensitive to the development of lung tumors by this mode of action. These mice could also be used to demonstrate the degree of metabolism of these compounds by the human CYP2F1 enzyme.

### *G.2. Inconsistencies*

For most of the chemicals tested, effects were seen only at the highest doses tested, thus, for some increased lung tumors were found only in males, while for others they were only in females, and for others they were in both sexes. It is suspected that higher doses, if they could be tolerated, would produce increased lung tumors in both sexes.

For most of the chemicals, cytotoxicity was also seen in the nasal olfactory epithelium of mice and rats. One exception was ethylbenzene; it is suspected that a higher concentration would produce the nasal lesions. Coumarin was administered by gavage, but cytotoxicity was not seen in the nasal tissue. This may be because gavage administration means that coumarin can only reach the nasal tissue through the blood stream; sufficient coumarin may not reach the tissue to cause cytotoxicity.

### *G.3. Data Gaps*

It is proposed that there are sufficient data to analyze this mode of action. Further studies in cyp2f2-knockout mice may provide confirmatory evidence, but are not required to accept this mode of action.

## H. Conclusions

It is proposed that metabolism of several chemicals by CYP2F family results in cytotoxicity in organs high in CYP2F; namely, *cyp2f2* in nasal and lung tissue in mice and *cyp2f4* in nasal tissue in rats. In mouse lung, an organ with a high background incidence of tumors, the resultant cytotoxicity and subsequent regenerative hyperplasia leads to an increase in lung tumors that are mostly benign and are not life-shortening. A complete picture of the mode of action has not been developed in any one model compound, but is synthesized using data from several chemicals (Table 6; shown pictorially using styrene as an example in Fig. 2). Some chemicals are included because they have similar structures, and the bioassay data fit the pattern. Other chemicals are included because metabolism by *cyp2f2* has also been demonstrated. For coumarin, naphthalene, and styrene, inhibition of toxicity in lung with inhibition of *cyp2f2* has also been demonstrated.

The chemicals used as examples of this mode of action generally are negative in standard genotoxicity assays. However, the more assays that have been conducted on a chemical, the more likely that some individual assays were positive. The examples are generally negative in the Ames assay; two were tested in mouse lymphoma – 1 positive, one equivocal. *In vitro* chromosome aberrations or micronuclei were assayed in 6 chemicals; 4 were negative, 1 equivocal and 2 positive. *In vivo* chromosome aberrations or micronucleus were tested in 7 of the 8 chemicals, all were negative. Sister chromatid exchange was positive in all 4 chemicals tested *in vitro* and in the only one tested *in vivo*.

Oxidation of several chemicals to cytotoxic metabolites by the Clara cell specific enzyme *cyp2f2* appears to be a biologically plausible MOA for mouse lung tumors. Rat *cyp2f4* appears to be equally active in metabolizing these chemicals; however, *cyp2f4* occurs to a much lower extent in rat Clara cells and levels of metabolites produced are not sufficient to cause cytotoxicity. Also, human lungs contain far fewer numbers of Clara cells than mice (Plopper et al., 1992; Stott *et al.*, 2003), and human lung microsomes failed to or only marginally metabolized these compounds (Saghir *et al.*, 2006; Green et al., 2001, Carlson; Vassallo *et al.*, 2004). In addition, the human lung differs markedly from the mouse lung in the morphology of its Clara cells, which make

humans much less sensitive than mice to toxicity due to reactive metabolites (Green, 2000). The consistency of the relative species differences across chemicals with similar modes of action suggests that the decreased activity in human respiratory tract is not due to viability issues associated with explanted human tissues, but instead reflects a fundamental species difference with respect to the distribution, expression, and/or activity of CYP2F in the respiratory tract. The absence of a role for cyp2e1 metabolites (alkyl oxidation) in mouse pulmonary effects was demonstrated by the lack of protection from styrene toxicity by cyp2e1 inhibitor or reduction of toxicity in cyp2e1-knockout mice (Carlson, 2004).

Therefore, while this mode of action is theoretically possible in humans if sufficient metabolites are produced, this is highly unlikely to occur, and these chemicals are not expected to cause lung tumors in humans.

#### **Acknowledgments:**

The authors thank Drs. A. Buckpitt, C. Plopper and others from the UC Davis faculty for their pioneering work on the toxicity of naphthalene. Dr. Cruzan provides science consulting to the Styrene Information and Research Center (SIRC), Arlington, VA. Some of Dr. Carlson's research on styrene metabolism and toxicity has been funded by SIRC. The Dow Chemical Company has a financial interest in styrene, ethylbenzene, cumene, and divinylbenzene. Shell Oil Company has a financial interest in styrene ethylbenzene, and cumene.

#### **References:**

- Api, A.M., 2001. Lack of effect of coumarin on the formation of micronuclei in an in vivo mouse micronucleus assay. *Fd. Chem. Toxicol.* 39, 837–841.
- Baldwin, R.M., Jewell, W.T., Fannucchi, M.V., Plopper, C.G. and Buckpitt, A.R. (2004). Comparison of Pulmonary/Nasal CYP2f Expression Levels in Rodents and Rhesus Macaque. *J. Pharmac. Exp. Ther.* 309, 127-139.
- Bartels M., Rick, D., Zhang, F., Leibold, E., Gelbke, H., Cruzan, G. (2005). In vitro metabolism of 4-vinylphenol and styrene in mouse, rat and human microsomes. *The Toxicologist* 84, abstract 1563.
- Biró, A., Pállinger, E., Major, J., Jakab, M.G., Klupp, T., Falus, A., Tompa, A. (2002). Lymphocyte phenotype analysis and chromosome aberration frequency of workers

occupationally exposed to styrene, benzene, polycyclic aromatic hydrocarbons or mixed solvents. *Immunol Lett* 81(2), 133-140.

Boobis, A.R., Cohen, S.M., Dellarco, V., McGregor, D., Meek, M.E., Vickers, C., Willcocks, D., Farland, W. (2006). IPCS framework for analyzing the relevance of a cancer mode of action for humans. *Crit Rev Toxicol.* 36, 781-792.

Born, S.L., Fix, A.S., Caudill, D., Lehman-Mckeeman, L.D. (1998). Selective Clara cell injury in mouse lung following acute administration of coumarin. *Toxicol. Appl. Pharmacol.* 151, 45– 56.

Born, S. L., Caudill, D., Fliter, K. L., Purdon, M. P. (2002). Identification of the cytochromes P450 that catalyze coumarin 3,4-epoxidation and 3-hydroxylation. *Drug Metab. Dispos.* 30, 483-487.

Brown WR. (2000). Toxicology and Carcinogenesis Study of Ethylbenzene in B6C3F1 mice (CAS 100-41-4) NTP Report Number 466. Histopathology of Liver and Lung. Report prepared for the American Chemistry Council Ethylbenzene Panel, Arlington, Virginia.

Buckpitt, A., Chang, A., Weir, A., Van Winkle, L., Duan, X., Philpot, R., and Plopper, C. (1995). Relationship of cytochrome P-450 activity to Clara cell cytotoxicity. IV. Metabolism of naphthalene to naphthalene oxide in microdissected airways from mice, rats, and hamsters. *Mol. Pharmacol.* 47, 74-81.

Buckpitt, A., Bahnson, L.S. (1986). Naphthalene metabolism by human lung microsomal enzymes. *Toxicol.* 41, 33-341.

Buckpitt, A., Boland, B., Isbell, M., Morin, D., Shultz, M., Baldwin, R., Chan, K., Karlsson, A., Lin, C., Taff, A., West, J., Fanucchi, M., Van Winkle, L., Plopper, C. (2002). Naphthalene-induced respiratory Tract toxicity: metabolic mechanisms of toxicity. *Drug Metab Rev* 34, 791-820.

Carlson, G.P. (1997). Effects of inducers and inhibitors on the microsomal metabolism of styrene to styrene oxide in mice. *J Toxicol. Environ. Health* 51, 477-488.

Carlson, G.P., Hines, D.E., Mantick, N.A. (1998). Effects of inhibitors of CYP1A and CYP2B on styrene metabolism in mouse liver and lung microsomes. *Toxicol. Lett*, 9S, 131-137.

Carlson, G.P., Ullman, M., Mantick, N.A., Snyder, P.W. (2002). 4-Vinylphenol-Induced Pneumotoxicity and Hepatotoxicity in Mice. *Toxicol. Pathol.* 30, 1-5.

Carlson, G.P. (2002). Effect of the inhibition of the metabolism of 4-vinylphenol on its hepatotoxicity and pneumotoxicity in rats and mice. *Toxicology* 179, 129-136.

Carlson, G. (2004). Influence of selected inhibitors on the metabolism of the styrene metabolite 4-vinylphenol in wild-type and CYP2E1 knockout mice. *J. Toxicol. Environ. Health A* 67, 905-909.

Clay, P. (2001). Ethylbenzene: *In vivo* mouse liver unscheduled DNA synthesis assay. Central Toxicology Laboratory Report. CTL/SM0998/REG/REPT, Sponsored by the Styrenics Steering Committee, CEFIC, Brussels, Belgium.

Cohen, S.M., Klaunig, J., Meek, M.E., Hill, R.N., Pastoor, T., Lehman-McKeeman, L., Bucher, J., Longfellow, D.G., Seed, J., Dellarco, V., Fenner-Crisp, P., Patton, D. (2004). Evaluating the human relevance of chemically induced animal tumors. *Toxicol Sci.* 78, 181-186.

Cruzan, G., Cushman, J.R., Andrews, L.S., Granville, G.C., Miller, R.R., Hardy, C.J., Coombes, D.W., and Mullins, P.A. (1997) Subchronic inhalation studies of styrene in CD rats and CD-1 mice. *Fundam. Appl. Toxicol.* 35, 152-165.

Cruzan, G., Cushman, J.R., Andrews, L.S., Granville, G.C., Johnson, K.A., Hardy, C.J., Coombes, D.W., Mullins, P.A., and Brown, W.R. (1998). Chronic toxicity/oncogenicity study of styrene in CD rate by inhalation exposure for 104 weeks. *Toxicol. Sci.* 46, 266-281.

Cruzan, G., Cushman, J.R., Andrews, L.S., Granville, G.C., Johnson, K.A., Bevan, C., Hardy, C.J., Coombes, D.W., Mullins, P.A., and Brown, W.R. (2001). Chronic toxicity/oncogenicity study of styrene in CD- I mice by inhalation exposure for 104 weeks. *J. Appl. Toxicol.* 21, 186-198.

Cruzan, G., Carlson, G.P., Johnson, K.A., Andrews, L.S., Banton, M.I., Bevan, C., Cushman, J.R. (2002). Styrene respiratory tract toxicity and mouse lung tumors are mediated by CYP2F-generated metabolites. *Reg. Toxicol. Pharmacol.* 35, 308-319.

Cruzan, G., Carlson, G. P., Turner, M. Mellert, W. (2005). Ring-Oxidized Metabolites of Styrene Contribute to Styrene-Induced Clara Cell Toxicity in Mice. *J. Toxicol. Environ. Health, Part A* 68, 229-237.

Curren, R.D. (1987). Unscheduled DNA Synthesis in Rat Primary Hepatocytes (Laboratory Study No. T4786.380005; EPA OTS Fiche No. 0522853). Microbiological Associates, Inc., Bethesda, MD.

Dean, B.J., Brooks, T.M., Hodson-Walker, G. and Hutson, D.H. (1985). Genetic toxicology testing of 41 industrial chemicals. *Mutat. Res.* 153, 157-77.

Edwards, A.J., Price, R.J., Renwick, A.B., Lake, B.G., 2000. Lack of effect of coumarin on unscheduled DNA synthesis in the *in vivo* rat hepatocyte DNA repair assay. *Fd. Chem. Toxicol.* 38, 403-409.

Felter, S.P., Vassallo, J.D., Carlton, B.D., Daston, G.P. (2006). A safety assessment of coumarin taking into account species-specificity of toxicokinetics. *Fd. Chem. Toxicol.* 44, 462-475.

Ferguson, L.C., Gao, Z., Hoffman, H.B., Hedtke, B.M., Dix, K.J. (2008). Metabolism of [14C]cumene in F344 rats and B6C3F1 mice: formation of alpha-methylstyrene. *Tox. Sci.* 102, 63 (abstract).

Florin, I., Rutberg, L., Curvall, M., and Enzell, C.R. (1980). Screening of tobacco smoke constituents for mutagenicity using the Ames test. *Toxicology* 18,219-232.

Freeman, A.E., Weisburger, E.K., Weisburger, J.H., Wolford, R.G., Maryak, J.M., Huebner, R.J. (1973). Transformation of cell cultures as an indication of the carcinogenic potential of chemicals. *J. Natl. Cancer Inst.* 51, 799-808.

Gadberry, M.G., DeNicola, D.B., Carlson, G.P. (1996). Pneumotoxicity and hepatotoxicity of styrene to styrene oxide. *J. Toxicol. Environ. Health* 48, 273-294.

Galloway, S.M., Armstrong, M.J., Reuben, C., Colman, S., Brown, B., Cannon, C., Bloom, A.D., Nakamura, F., Ahmed, M., Duk, S. (1987). Chromosome aberrations and sister chromatid exchanges in Chinese hamster ovary cells: evaluations of 108 chemicals. *Environ. Mol. Mutagen.* 10 Suppl 10,1-17.

Genter, M.B., Marlowe, J., Kerzee, J.S., Dragin, N., Puga, A., Dalton, T.P., and Nebert, D.W. (2006). Naphthalene toxicity in mice and aryl hydrocarbon receptor-mediated CYPs. *Biochem. Biophys. Res. Commun.* 348, 120-123.

Gift, J.S. (2005). U.S. EPA's IRIS assessment of 2-butoxyethanol: the relationship of noncancer to cancer effects. *Toxicol. Lett.* 156: 163-78.

Green, T., Toghil, A., Foster, J. (2001a). The role of cytochrome P-450 in styrene induced pulmonary toxicity and carcinogenicity in the mouse. *Toxicology* 169, 107-117.

Green, T., Lee, R., Toghil, A., Meadowcroft, S., Lund, V., Foster, J. (2001b). The toxicity of styrene to the nasal epithelium of mice and rats: Studies on the mode of action and relevance to humans. *Chem. Biol. Interact.* 137,185-202.

Godderis, L., De Boeck, M., Haufroid, V., Emmery, M., Mateuca, R., Gardinal, S., Kirsch-Volders, M., Veulemans, H., Lison, D. (2004). Influence of genetic polymorphisms on biomarkers of exposure and genotoxic effects in styrene-exposed workers. *Environ Mol Mutagen* 44: 293-303.

Gulf Oil. (19984a). Cell transformation test of cumene (and) hepatocyte primary culture/DNA repair test of cumene: Final reports with cover letter. EPA/OTS; Doc #88-8500709 [TSCATS]

Gulf Oil. (1984b). Summary of Balb/3T3 Mouse embryo cell transformation, and hepatocyte primary culture/DNA repair tests. EPA/OTS; Doc #88-8500694 [TSCATS]

Gulf Life Sciences Center (GLSC) (1985a). CHO/HGPRT Test of Cumene (Project No. 84-2128; EPA OTS Fiche No. 0206775). Gulf Life Sciences Center, Pittsburgh, PA.



Gulf Life Sciences Center (GLSC) (1985b). Micronucleus Test of Cumene (Project No. 84-2129; EPA OTS Fiche No. 0522838). Gulf Life Sciences Center, Pittsburgh, PA.

Guyton, K.Z., Barone, S. Jr., Brown, R.C., Euling, S.Y., Jinot, J., Makris, S. (2008). Mode of action frameworks: a critical analysis. *J. Toxicol. Environ. Health B Crit. Rev.* 11, 16-31.

Guzelian, P.S., Victoroff, M.S., Halmes, N.C., James, R.C., Guzelian, C.P. (2005). Evidence-based toxicology: a comprehensive framework for causation. *Human & Experimental Toxicology* (2005) 24, 161-201.

Harper, B.L., Ramanujam, V.M., Gad-El-Karim, M.M., Legator, M.S. (1984). The influence of simple aromatics on benzene clastogenicity. *Mutat. Res.* 128, 105-114.

Henderson, L.M., Speit, G. (2005). Review of the genotoxicity of styrene in humans. *Mutat. Res.* 589, 158-191.

Hofmann, C., Putz, C., Semder, B., Faller, T.H., Csanady, G.A., Filser, J.G. (2006). Styrene-7,8-oxide burden in ventilated, perfused lungs of mice and rats exposed to vaporous styrene. *Toxicol Sci* 90, 39-48.

IARC. (1994a). *Some Industrial Chemicals. Styrene. IARC Monographs on the Evaluation of Carcinogenic Risk of Chemicals to Humans. Volume 60*, pp. 233-320. Lyon, France, IARC Press.

IARC. (2000). *Some Industrial Chemicals. Ethylbenzene. IARC Monographs on the Evaluation of Carcinogenic Risks to Humans. Volume 77*, pp. 227-266. Lyon, France, IARC Press.

IARC. (2002). *Some Traditional Herbal Medicines, Some Mycotoxins, Naphthalene and Styrene. IARC Monographs on the Evaluation of Carcinogenic Risk of Chemicals to Humans, Volume 88*, pp. 437-550. Lyon, France, IARC Press.

Kaufmann, W., Mellert, W., van Ravenzwaay, B., Landsiedel, R., Poole, A. (2005). Effects of styrene and its metabolites on different lung compartments of the mouse--cell proliferation and histomorphology. *Regul. Toxicol. Pharmacol.* 42, 24-36.

Laffon, B., Pásaro, E., Méndez, J. (2002). Evaluation of genotoxic effects in a group of workers exposed to low levels of styrene. *Toxicol.* 171, 175-186.

Lake, B., (1999). Coumarin metabolism, toxicity, and carcinogenicity: relevance for human risk assessment. *Fd. Chem. Toxicol.* 37, 423-453.

Lijinsky, W. (1986). Rat and mouse forestomach tumors induced by chronic oral administration of styrene oxide. *J. Natl. Cancer Inst.* 77, 471-476.

McGregor, D.B., Brown, A., Cattanach, P., Edwards, I., McBride, D., Riach, C., and Caspary, W.J. (1988). Responses of the L5178Y tk+/tk- mouse lymphoma cell forward mutation assay:

III. 72 coded chemicals. *Environ. Mol. Mutagen.* 12, 85-154.

Meek, M.E. (2008). Recent developments in frameworks to consider human relevance of hypothesized modes of action for tumours in animals. *Environ. Mol. Mutagen.* 49, 110-116.

Mohtashamipur, E., Norpoth, K., Woelke, U., and Huber, P. (1985). Effects of ethylbenzene, toluene, and xylene on the induction of micronuclei in bone marrow polychromatic erythrocytes of mice. *Arch. Toxicol.* 58, 106-109.

Morris, J.B. (2000). Uptake of styrene in the upper respiratory tract of the CD mouse and Sprague-Dawley rat. *Toxicol. Sci.* 54, 222-228.

Nestmann, E.R., Lee, E.G., Matula, T.I., Douglas, G.R., and Mueller, J.C. (1980). Mutagenicity of constituents identified in pulp and paper mill effluents using the Salmonella/mammalian-microsome assay. *Mutat. Res.* 79, 203-212.

Nestmann, E.R. and Lee, E.G. (1983). Mutagenicity of constituents of pulp and paper mill effluent in growing cells of *Saccharomyces cerevisiae*. *Mutat. Res.* 119, 273-280.

NTP (1989) Toxicology and Carcinogenesis Studies of Benzofuran (CAS No. 271-89-6) in B6C3F1 Mice (Inhalation Studies). National Institute of Environmental Health Sciences Report TR-370.

NTP (National Toxicology Program). (1990a). Toxicology and Carcinogenesis Studies of Vinyl Toluene (Mixed Isomers) (CAS No. 25013-15-4) in F344/N Rats and B6C3F1 Mice (Gavage Studies), NTP TR 375. US Department of Health and Human Services, Public Health Service, National Institutes of Health. Research Triangle Park, North Carolina.

NTP (National Toxicology Program). (1990b). Toxicology and Carcinogenesis Studies of a-Methylbenzyl Alcohol (CAS No. 98-85-1) in F344/N Rats and B6C3F1 Mice (Gavage Studies). NTP TR-369. US Department of Health and Human Services, Public Health Service, National Institutes of Health. Research Triangle Park, North Carolina.

NTP (1992) Toxicology and Carcinogenesis Studies of Naphthalene (CAS No. 91-20-3) in B6C3F1 Mice (Inhalation Studies). National Institute of Environmental Health Sciences Report TR-410.

NTP (1993a). Toxicology and Carcinogenesis Studies of Coumarin (CAS No. 91-64-5) in F344/N Rats and B6C3F1 Mice (Gavage Studies). National Institute of Environmental Health Sciences Report TR-422.

NTP (1993b) Toxicology and Carcinogenesis Studies of Dihydrocoumarin (CAS No. 119-84-6) in B6C3F1 Mice (Inhalation Studies). National Institute of Environmental Health Sciences Report TR-423.

NTP (1999). Toxicology and Carcinogenesis Studies of Ethylbenzene (CAS No. 100-41-4) in F344/N Rats and B6C3F1 Mice (Inhalation Studies). National Institute of Environmental Health Sciences Report TR-466.

NTP (2000) Toxicology and Carcinogenesis Studies of Naphthalene (CAS No. 91-20-3) in F344/N Rats (Inhalation Studies). National Institute of Environmental Health Sciences Report TR-500.

NTP (2007a) Toxicology and Carcinogenesis Studies of Cumene (CAS No. 98-82-8) in F344/N Rats and B6C3F1 Mice (Inhalation Studies) draft . National Institute of Environmental Health Sciences Report TR-542.

NTP (2007b) Toxicology and Carcinogenesis Studies of  $\alpha$ -Methylstyrene (CAS No. 98-83-9) in F344/N Rats and B6C3F1 Mice (Inhalation Studies) draft . National Institute of Environmental Health Sciences Report TR-543.

NTP (2007c) Toxicology and Carcinogenesis Studies of Divinylbenzene-HP (CAS No. 1321-74-0) in F344/N Rats and B6C3F1 Mice (Inhalation Studies) draft. National Institute of Environmental Health Sciences Report TR-534.

O'Brien, K.A., Smith, L.L., Cohen, G.M. (1985). Differences in naphthalene-induced toxicity in the mouse and rat. *Chem. Biol. Interact.* 55, 109-122.

Phimister, A.J., Lee, M.G., Morin, D., Buckpitt, A.R. and Plopper, C.G. (2004). Glutathione depletion is a major determinant of inhaled naphthalene respiratory toxicity and naphthalene metabolism in mice. *Toxicol. Sci.* 82, 268-278.

Plopper, C.G., Hill, L.H., Mariassy, A.T. (1980a). Ultrastructure of the nonciliated bronchiolar epithelial (Clara) cell of mammalian lung. III. A study of man with comparison of 15 mammalian species. *Exp. Lung Res.* 1, 171-180.

Plopper, C.G., Mariassy, A.T., Hill, L.H. (1980b). Ultrastructure of the nonciliated bronchiolar epithelial (Clara) cell of mammalian lung: I. A comparison of rabbit, guinea pig, rat, hamster, and mouse. *Exp. Lung Res.* 1, 139-154.

Plopper, C.G., Suverkropp, C., Morin, D., Nishio, S., Buckpitt, A. (1992). Relationship of cytochrome P-450 activity to Clara cell cytotoxicity. I. Histopathologic comparison of the respiratory tract of mice, rats and hamsters after parenteral administration of naphthalene. *J. Pharmacol. Exp. Ther.* 261, 353-363.

Putman, D.L. (1987). Chromosome Aberrations in Chinese Hamster Ovary (CHO) Cells (Laboratory Study No. T4786.337012; EPA OTS Fiche No. 0522852). Microbiological Associates, Inc., Bethesda, MD.

Rhomberg, L. (2007). Hypothesis-Based Weight of Evidence and its Bearing on Uncertainty Analysis in Risk Assessment. 5th Meeting of the NAS Committee on Improving Risk Analysis

Approaches Used by the US EPA, 12 June 2007.

Rundell, J.O., Guntakatta, M., Matthews, E.J. (1983). Criterion development for the application of Balb/C-3T3 cells to routine testing for chemical carcinogenic potential, in *Short-Term Bioassays in the Analysis of Complex Environmental Mixtures III*. Environ. Sci. Res. 27, 309-324.

Saghir, S.A., Rick, D.L., Bartels, M.J., Bus, J.S. (2006). *In vitro* metabolism of ethylbenzene by rat, mouse and human liver and lung microsomes. *The Toxicologist*. 90, 141.

Saghir, S.A., Rick, D.L., McClymont, E.L., Zhang, F., Bus, J.S. (2007). Ethylbenzene: *in vitro* metabolism in rat, mouse, and human liver and lung microsomes. Phase II study. The Dow Chemical Company, Midland, Michigan. February 20, 2007.

Sarangapani, R., Teeguarden, J.G., Cruzan, G., Clewell, H.J., Andersen, M.E. (2002). Physiologically based pharmacokinetic modeling of styrene and styrene oxide respiratory-tract dosimetry in rodents and humans. *Inhal Toxicol*. 14, 789-834.

Sasaki, Y.F., Izumiyama, F., Nishidate, E., Matsusaka, N., Tsuda, S. (1997). Detection of rodent liver carcinogen genotoxicity by the alkaline single-cell gel electrophoresis (Comet) assay in multiple mouse organs (liver, lung, spleen, kidney, and bone marrow). *Mutat. Res.* 391, 201-214.

SEER. (2006). Cancer Stat Fact Sheets for Liver and Lung Cancer. Surveillance Epidemiology and End Results: <http://seer.cancer.gov/>

Seidel, S.D., Schisler, M.R., and Kleinert, K.M. (2006). Evaluation of Ethylbenzene in the Mouse Lymphoma (L5178YTK+/-) Forward Mutation Assay. Toxicology & Environmental Research and Consulting, The Dow Chemical Company, Study ID: 051157.

Simmon, V.F., Kauhanen, K., and Tardiff, R.G. (1977). Mutagenic activity of chemicals identified in drinking water. *Dev. Toxicol. Environ. Sci.* 2, 249-258.

Stott, W.T., Johnson, K.A., Bahnemann, R., Day, S.J., McGuirk, R.L. (2003). Evaluation of potential modes of action of inhaled ethylbenzene in rats and mice. *Toxicol. Sci.* 71, 53-66.

Sumner, S.J. & Fennell, T.R. (1994). Review of the metabolic fate of styrene. *Crit. Rev. Toxicol.* 24 (S1), S11-33.

Teixeira, J.P., Gaspar, J., Silva, S., Torres, J., Silva, S.N., Azevedo, M.C., Neves, P., Laffon, B., Méndez, J., Gonçalves, C., Mayan, O., Farmer, P.B., Rueff, J. (2004). Occupational exposure to styrene: modulation of cytogenetic damage and levels of urinary metabolites of styrene by polymorphisms in genes *CYP2E1*, *EPHX1*, *GSTM1*, *GSTT1* and *GSTP1*. *Toxicology* 195, 231-242.

Tingle, M.D., Pirmohamed, M., Templeton, E. Wilson, A.S., Madden, S., Kitteringham, N.R., Park, B.K. (1993). An investigation of the formation of cytotoxic, genotoxic, protein-reactive and stable metabolites from naphthalene by human liver microsomes. *Biochem. Pharmacol.* 46,

1529-1538.

Turner, M., Mantick, N.A., Carlson, G.P. (2005). Comparison of the depletion of glutathione in mouse liver and lung following administration of styrene and its metabolites styrene oxide and 4-vinylphenol. *Toxicology* 206, 383–388.

U.S. EPA. Alpha2u-Globulin: Association with Chemically Induced Renal Toxicity and Neoplasia in the Male Rat. U.S. Environmental Protection Agency, Risk Assessment Forum, Washington, DC, EPA/625/3-91/019F (NTIS PB92143668), 1991.

U.S. EPA. (2005). Guidelines for carcinogen risk assessment. EPA/630/P-03/001B. March 2005. (Available at <http://cfpub.epa.gov/ncea/cfm/recordisplay.cfm?deid=116283>.)

Vassallo, J.D., Hicks, S.M., Born, S.L., Daston, G. P., (2004). Roles for epoxidation and detoxification of coumarin in determining species differences in Clara cell toxicity. *Toxicol. Sci.* 82, 26-33.

Vogie, K., Mantick, N., Carlson, G. (2004). Metabolism and toxicity of the styrene metabolite 4-vinylphenol in CYP2E1 knockout mice. *J Toxicol Environ Health A.* 67, 145-152.

Weed, D.L. (2005). Weight of Evidence: A Review of Concept and Methods. *Risk Analysis*, 25, 1545-1557.

West, J., Pakenham, G., Morin, D., Fleschner, C., Buckpitt, A. (2001). Inhaled naphthalene causes dose dependent Clara cell toxicity in mice but not in rats. *Toxicol. Appl. Pharmacol.* 173, 114-119.

Yang, L.L. (1987). CHO/HGPRT Mutation Assay on Cumene (Laboratory Study No. T4786.332010; EPA OTS Fiche No. 0522853). Microbiological Associates, Inc., Bethesda, MD.

Zeiger, E., Anderson, B., Haworth, S., Lawlor, T. and Mortelmans, K. (1992). Salmonella mutagenicity tests: V. Results from the testing of 311 chemicals. *Environ. Mol. Mutagen.* 19 Supp. 21, 2-141.

Legends to Figures:

Figure 1. Chemical structure of Chemicals Included in the Assessment of cyp2f2-Mediated Mouse Lung Tumors.

Figure 2. Postulated MOA for cyp2f2-Mediated Mouse Lung Tumors. The postulated MOA is illustrated using styrene. The major metabolic pathway in liver and lung via cyp2e1 metabolism to styrene-7,8-oxide, but lung cytotoxicity and tumors result from the production of different metabolites via cyp2f2 oxidation.

Table 1. Examples of Chemicals that Cause Mouse, but not Rat, Lung Tumors

Chemical	Exposure Route and Dose (Strain)	Lung Tumors in Male Mice	Lung Tumors in Female Mice
Coumarin	Oral: 0, 50, 100, 200 mg/k/day (B6C3F1)	14/50; 8/50; 14/50; 25/50	2/51; 5/49; 7/49; 27/51
Naphthalene	Inhalation: 0, 10, 30 ppm (B6C3F1)	7/70; 17/69; 31/135	5/69; 2/65; 28/135
Styrene (ethenylbenzene)	Oral: 0, 150, 300 mg/kg/day (B6C3F1) Inhalation: 0, 20, 40, 80, 160 ppm (CD-1)	0/20; 6/50; 9/50 17/50; 24/50; 36/50; 30/50; 36/50	0/20; 1/50; 3/50 6/50; 16/50; 17/50; 11/50; 27/50
Ethylbenzene	Inhalation: 0, 75, 225, 750 ppm (B6C3F1)	7/50; 10/50; 15/50; 19/50	4/50; 6/50; 5/50; 8/50
$\alpha$ -Methylstyrene (isopropenylbenzene)	Inhalation: 0, 100, 300, 600 ppm (B6C3F1)	13/50; 6/50; 9/50; 9/50	2/50; 7/50; 5/50; 6/50
Cumene (isopropylbenzene)	Inhalation: 0, 250, 500, 1000 ppm (B6C3F1)	19/50; 38/50; 42/50; 43/50	4/50; 31/50; 42/50; 46/50
Divinylbenzene	Inhalation: 0, 10,30, 100 ppm (B6C3F1)	16/50; 10/50; 8/50; 20/50	6/50; 12/50; 8/50; 13/50
Benzofuran	Oral\; 0, 30, 60 mg/kg/day (B6C3F1)	10/50; 9/40; 19/50	2/50; 9/50; 14/50

Table 2. Dose and Temporal Relationships of Key Events in Mice

Chemical	Metabolism by CYP2F2	Acute Cytotoxicity	Sustained Cytotoxicity	Hyperplasia	Tumors
Styrene	yes	40 ppm*	20 ppm	160 ppm 3 months to 20 ppm after 2 years	Only - male females
Ethylbenzene	yes	750 ppm	750 ppm	750 ppm	750 p
Naphthalene	yes	8 ppm	30 ppm	30 ppm	30 pp
Cumene	Not tested	Not tested	250 ppm males 125 ppm females	250 ppm males 125 ppm females	250 p 125 p
$\alpha$ -Methylstyrene	Not tested	Not tested	300 ppm females	300 ppm females only	100 p (not s
Divinylbenzene	Not tested	Not tested	10 ppm males and females	10 ppm males and females	10 or femal
Coumarin	yes	150 mg/kg by gavage	None reported	None reported	200 n males 275 n no inc
Benzofuran	Not tested	Not tested	120 mg/kg by gavage	120 mg/kg	120 n femal

\*lowest concentration tested



Table 3. Summary of *In Vitro* Genotoxicity Studies

Ames	Cumene	negative 2 assays	Simmon et al., 1977; Florin et al., 1980
	Divinylbenzene	negative 3 assays	NTP, 2007c
	$\alpha$ -Methylstyrene	negative 1 assay	NTP, 2007b
	Coumarin	negative 2 assays	Lake et al., 1999
	Ethylbenzene	negative 4 assays	Dean <i>et al.</i> , 1985; Florin <i>et al.</i> , 1980; Nestmann <i>et al.</i> , 1980; Zeiger <i>et al.</i> , 1992; Nestmann and Lee, 1983
	Benzofuran	negative 1 assay	NTP, 1989
	Naphthalene	negative 12 assays	See IARC, 2002
	Styrene	TA98 negative 13; TA100 positive 1, negative 13; TA1535 positive 4, negative 10; TA1537 negative 14; TA1538 negative 14	See IARC, 1994
Mouse lymphoma	Ethylbenzene	equivocal 2 assay; negative 1 assay	McGregor <i>et al.</i> , 1988; Wollny, 2000; Seidel <i>et al.</i> , 2006
	Benzofuran	positive 1 assay	NTP, 1989
CHO HPRT	Cumene	negative 2 assays	Yang, 1987; ; Gulf Life Sciences Center, 1985a
CHL, V79, hprt	Styrene	positive 1 assay negative 1 assay	IARC, 1994
UDS	Cumene	positive 1 assay; negative 1 assay	Curren, 1992; Gulf Oil, 1984b
Chromosomal aberrations	$\alpha$ -Methylstyrene	negative 1 assay	NTP, 2007b
	Coumarin	equivocal (positive only above 10 mM)	
	Ethylbenzene	negative 2 assay	Dean <i>et al.</i> , 1985; NTP, 1999
	Benzofuran	negative 1 assay	NTP, 1989
	Styrene	positive in 8 assays; negative in 1	See IARC, 1994
Micronucleus	Naphthalene	positive 1 assay	Sasaki et al., 1997
	Styrene	positive 2 assays	See IARC, 1994
Cell transformation	Cumene	negative 1 assay; positive 1 assay	Putnam, 1987); Gulf Oil, 1984a
	Naphthalene	negative 2 assays	Freeman et al., 1973; Rundell et al., 1983
Sister chromatid exchange	$\alpha$ -Methylstyrene	positive 1 assay	NTP, 2007b

	Benzofuran	positive 1 assay	NTP, 1989
	Naphthalene	positive 1 assay; negative 1 assay	Galloway et al., 1987; Tingle et al., 1993
	Styrene	positive 10 assays; negative 2 assays	See IARC, 1994; IARC, 2002

Table 4. Summary of *In Vivo* Genotoxicity Studies In Laboratory Animals

Micronucleus	Cumene	negative 2 assays, equivocal 1 assay	Gulf Life Sciences Center, 1985b; NTP, 2007a
	Divinylbenzene	negative 2 assays	NTP, 2007c
	$\alpha$ -Methylstyrene	negative 1 assay; equivocal 1 assay	NTP, 2007b
	Coumarin	negative 2 assays	Api, 2001; Edwards et al., 2000
	Ethylbenzene	negative 2 assays	NTP, 1999; Mohtashampur <i>et al.</i> , 1985
	Naphthalene	negative 1 assay	Harper et al., 1984
	Styrene	positive 2 assays; negative 5 assays	See IARC, 1994
Chromosomal aberrations	Styrene	positive 1 assay; negative 11 assays	See IARC, 1994; IARC, 2002
Sister chromatid exchange	Styrene	positive 6 assays; negative 1 assay	See IARC, 1994; IARC, 2002
UDS	Ethylbenzene	negative 1 assay	Clay, 2001

Table 5. Genotoxicity Studies in Reinforced Plastics Workers

Chromosomal aberrations	IARC	positive 8 studies; negative 12 studies	See IARC, 1994, 2002
	NTP draft	positive 17 studies; negative 13 studies	NTP, 2008
	disagreement	NTP – positive 4 studies; IARC listed as negative	
Micronucleus	IARC	positive 3 studies; negative 10 studies	See IARC, 1994; 2002
	Since IARC	positive 2 studies; negative 2 studies	Vodicka et al., 2004; Godderis et al., 2004; Teixeira et al., 2004; Migliore et al, 2006
	NTP draft	positive 7 studies; negative 10 studies; suggestive 2 studies	NTP, 2008

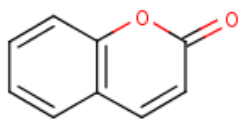
Sister chromatid exchange	IARC	positive 5 study; equivocal 2 studies; negative 10 studies	See IARC, 1994; 2002
	Since IARC	positive 3 studies	Laffon et al., 2002; Biro et al., 2002; Teixeira et al., 2004
	NTP Draft	positive 9 studies; negative 11 studies	NTP, 2008

Table 6. Mouse Lung Tumor MOA Weight of Evidence

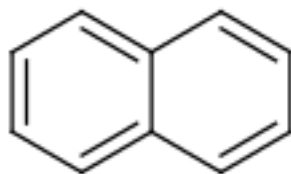
Event	Specificity	Biological plausibility	Qual. Human Relevance	Quant. Relev
<b>A. Toxicity results from metabolites generated in lung by CYP2F family</b>				
A.1. Location of cytotoxicity consistent with location of CYP2F	High	CYP2F2 found in Clara cells; cytotoxicity occurs in Clara cells	Limited CYP2F1 in human lung	Cytotoxicity not
A.2. Cytotoxicity is consistent across chemicals	High	Cytotoxicity from styrene, ethylbenzene, $\alpha$ -methylstyrene, cumene, divinylbenzene, naphthalene, coumarin, benzofuran	No human lung cytotoxicity reported	Cytotoxicity not
A.3. Metabolism is necessary for effect	High	Inhibition of CYP2F2 inhibits toxicity	Limited if any metabolism in human lung	Metabolism not
A.4. Species differences in toxicity are consistent with CYP2F. Reactive metabolites are not formed by other CYPs	High	Mice have more 2F2 in lung than rats (2F4); humans have little 2F1; No decrease in lung toxicity in CYP2E1 knockout mice. No effect on lung toxicity by inhibitors of other CYPs.	Low metabolism indicates low likelihood of tumors	Tumors unlikely
<b>B. Cytotoxicity leads to hyperplasia</b>				
B.1. Increased cell replication only in Clara cells	High	Cell death leads to regenerative hyperplasia; cytotoxicity and cell replication both in Clara cells; does not occur in rats.	Hyperplasia not reported in human	Hyperplasia not
B.2. Increased cell replication sustained	Medium	Demonstrated through 5 weeks by BrdU; followed by cellular crowding in terminal bronchioles, then hyperplasia; does not occur in rat lung.	Not found	Not likely
B.3 Cytotoxic events (GSH depletion,	Medium	GSH depletion demonstrated;	Not found in	Not likely

oxidative stress)		oxidative stress may be present.	human tissue	
<b>C. Sustained cell replication leads to lung tumors</b>				
C1. Late occurring tumors	Medium	Consistent with epigenetic events	Difficult to find among human lung cancer incidence	Not likely
C2. Progression	Medium	Cell replication, leading to hyperplasia	If hyperplasia, then could expect tumors	Not likely
C3. Genotoxic events in lungs	High	Lack of genotoxic responses supports epigenetic MOA	No evidence	Not likely

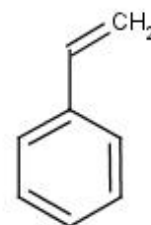
Figure 1. Formulas for Chemicals Included



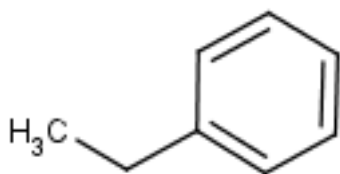
Coumarin



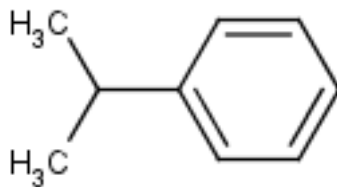
Naphthalene



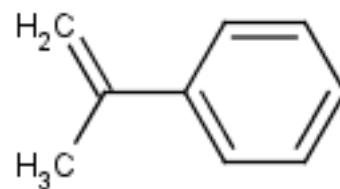
Styrene



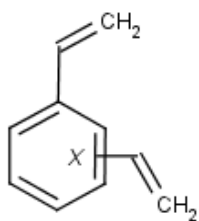
Ethylbenzene



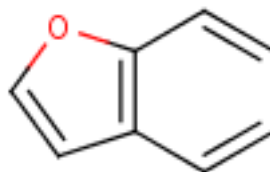
Cumene



alpha-Methylstyrene



Divinylbenzene



Benzofuran

Figure 2

