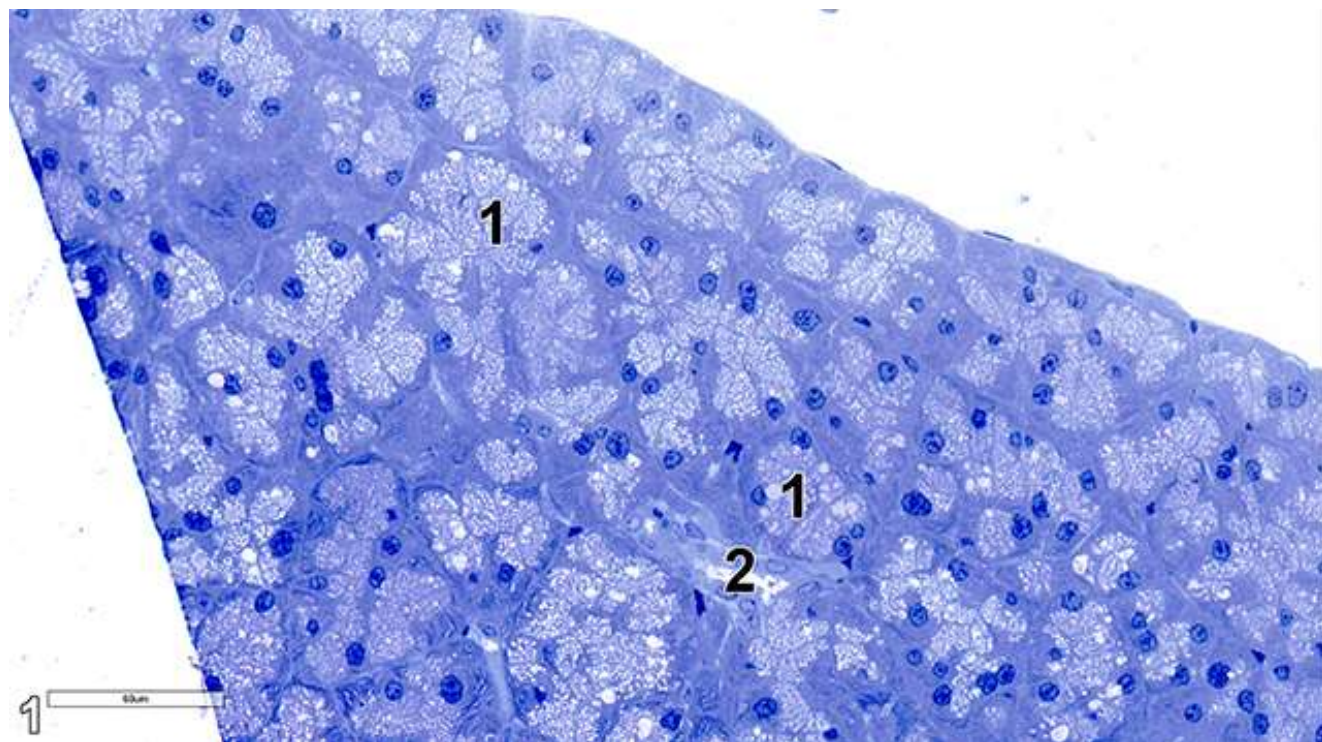




# NTP Rodent Ultrastructure Atlas

## *Lacrimal Gland*

Lacrimal glands are similar in structure to salivary glands and are composed of acini and ducts. The acinar cells contain serous glandular cells associated with basally located myoepithelial cells. The acinar cells contain mucous granules, abundant rough endoplasmic reticulum, and sparse lipid bodies.



*Figure 1. A semithin section (0.5 micrometer thick) of a toluidine blue O-stained portion of a lacrimal gland showing acini (1) and a single secretory duct (2). 38x.*



# NTP Rodent Ultrastructure Atlas

## *Lacrimal Gland*

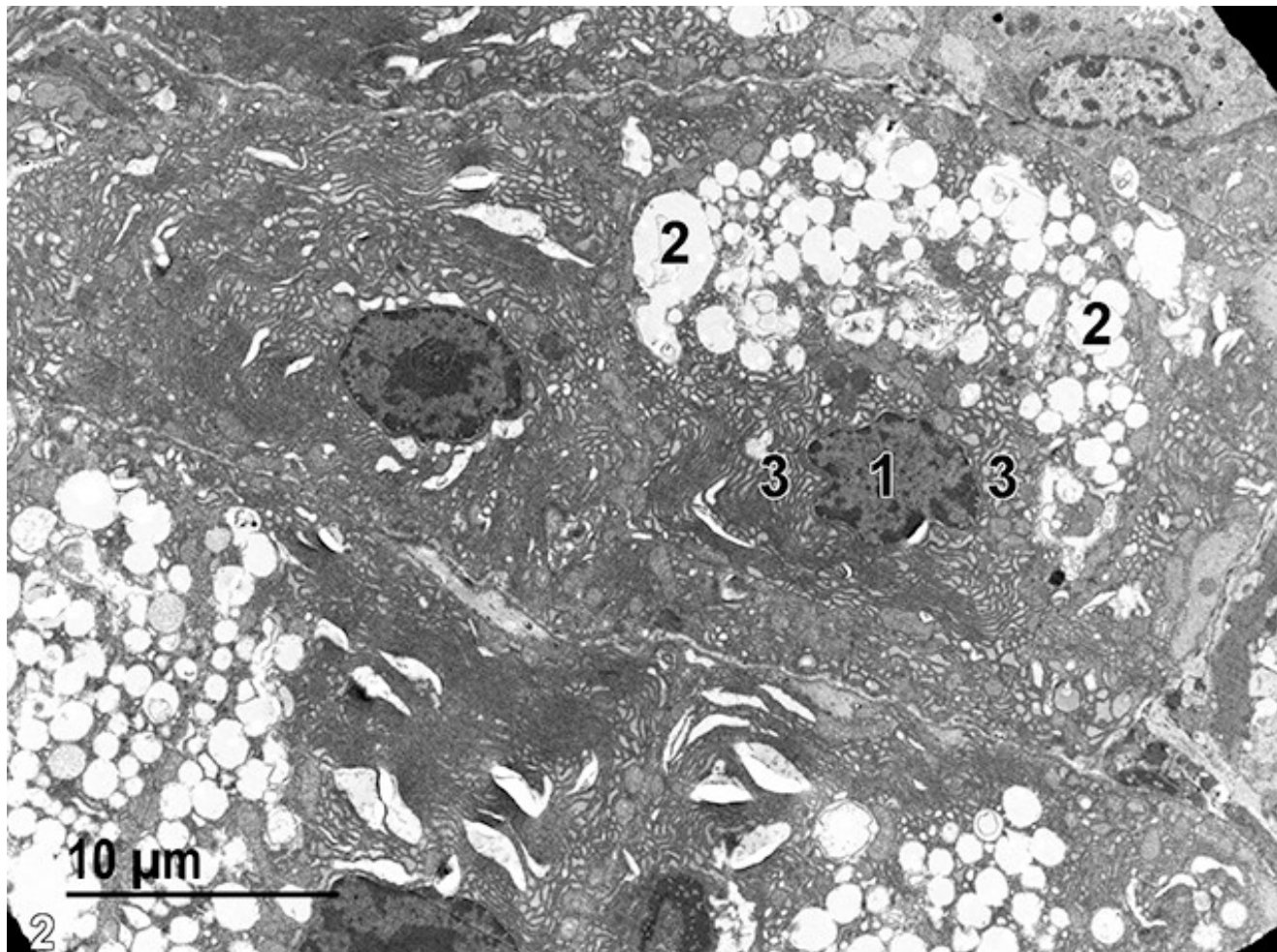
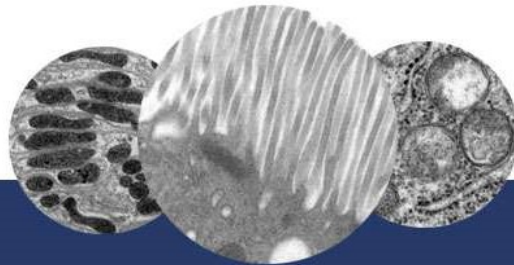


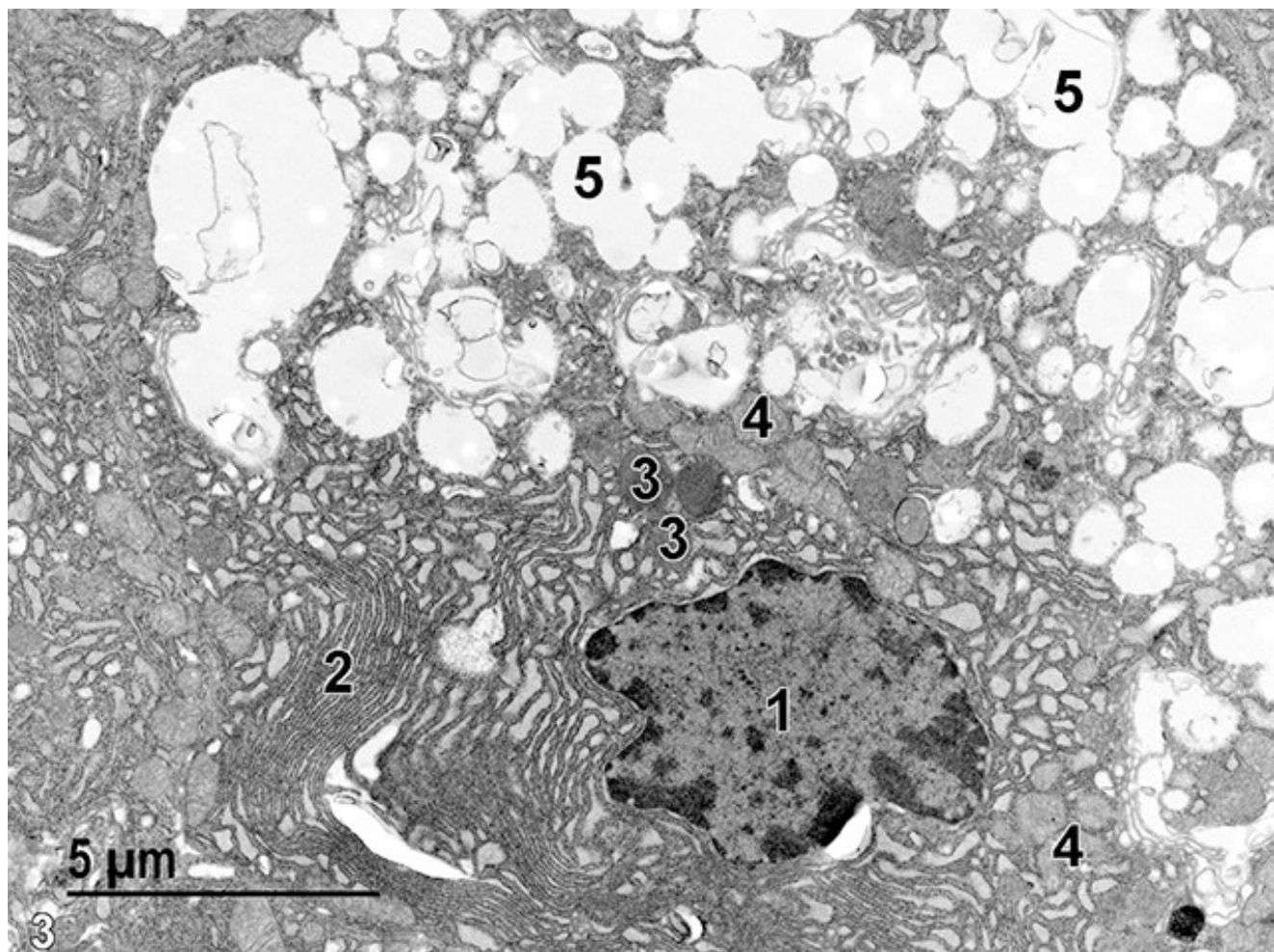
Figure 2. An electron micrograph of a lacrimal gland acinus. The nucleus of an acinar cell (1) is surrounded by stacks of rough endoplasmic reticulum (3). Numerous mucous granules (2) are present. 2900x.



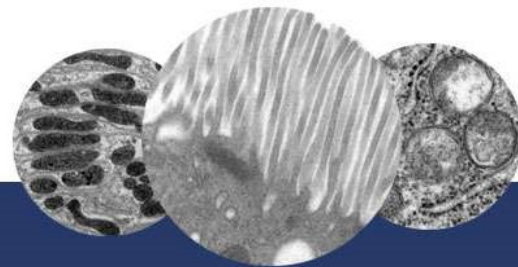


# NTP Rodent Ultrastructure Atlas

## *Lacrimal Gland*



*Figure 3. A higher magnification view of the contents of an acinar cell. The nucleus (1) has a large amount of perinuclear rough endoplasmic reticulum (2). Near the nucleus are several lipid droplets (3) and mitochondria (4). The rest of the cell is filled with mucous granules (5). 6800x.*



# NTP Rodent Ultrastructure Atlas

## *Lacrimal Gland*

### REFERENCES

Dellmann HD, Eurell J, eds. 1998. Textbook of Veterinary Histology. 5th ed. Philadelphia: Lippincott Williams & Wilkins.

Weiss L, ed. 1988. Cell and Tissue Biology: A Textbook of Histology. 6th ed. Baltimore: Urban and Schwarzenberg.

### AUTHOR:

Michael Dykstra, Ph.D.  
Electron Microscopy Consulting  
Beaufort, NC

### EDITOR:

Kathleen A. Szabo, DVM, MS  
Senior Veterinary Pathologist  
Charles River Laboratories, Inc.  
Frederick, MD