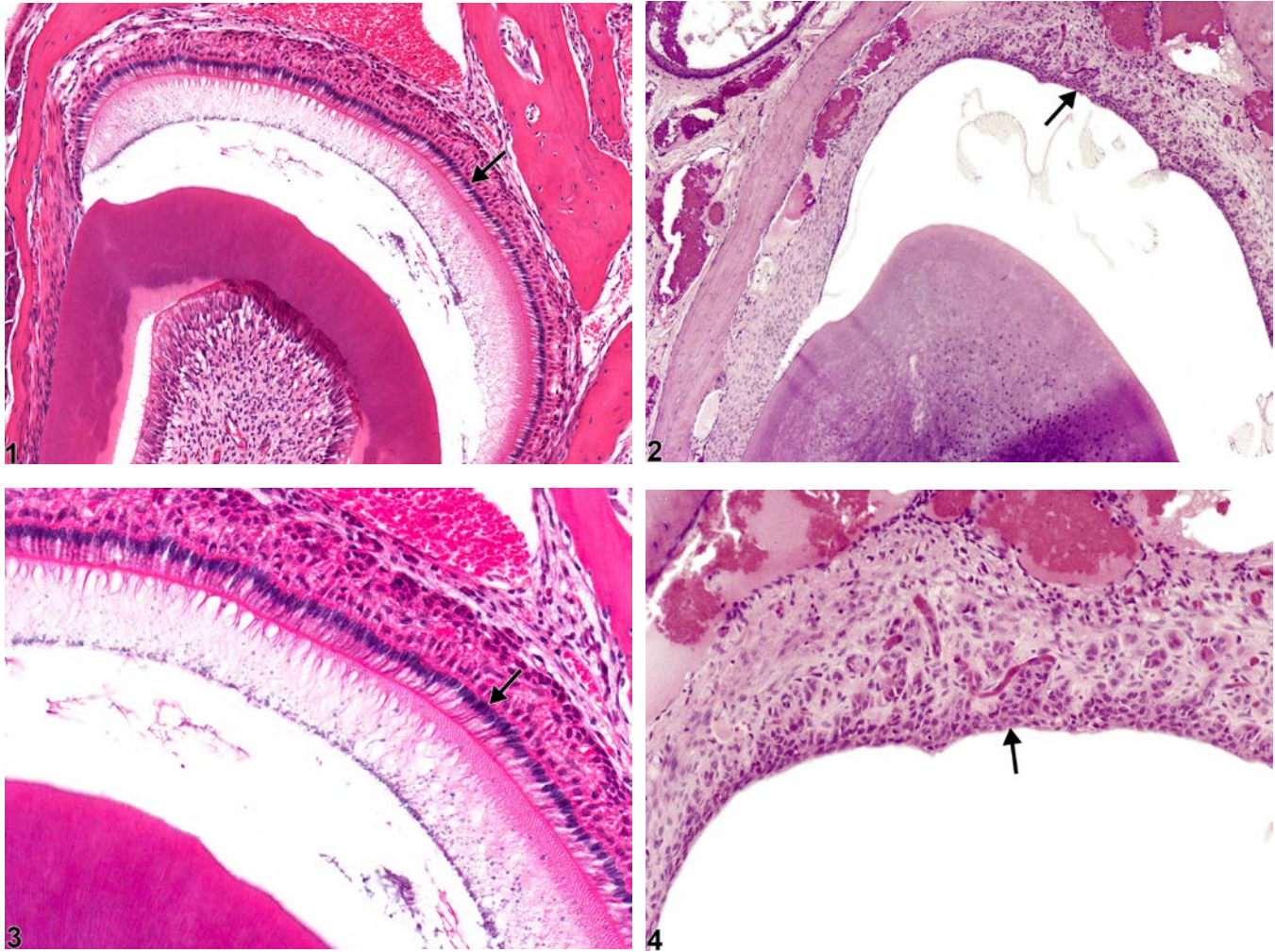




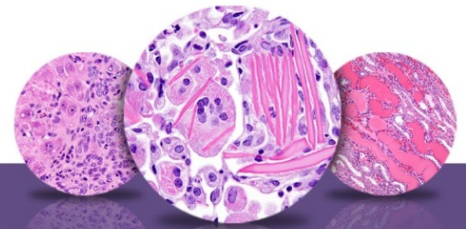
# NTP Nonneoplastic Lesion Atlas

## *Tooth, Ameloblast – Metaplasia, Squamous*



**Figure Legend:** **Figure 1** Normal ameloblasts (arrow) in a male B6C3F1 mouse from a chronic study. **Figure 2** Tooth, Ameloblast - Metaplasia, Squamous in a male F344/N rat from a chronic study. The ameloblasts (compare with Figure 1) have been replaced by squamous epithelium (arrow). **Figure 3** Normal ameloblasts (arrow) in a male B6C3F1 mouse from a chronic study (higher magnification of Figure 1). **Figure 4** Tooth, Ameloblast - Metaplasia, Squamous in a male F344/N rat from a chronic study (higher magnification of Figure 2). The ameloblasts (compare with Figure 3) have been replaced by squamous epithelium (arrow).

**Comment:** Squamous metaplasia can be seen following injury to the ameloblasts. While atrophy is characterized by decreased cytoplasm (shortening of individual ameloblasts), squamous metaplasia is



## NTP Nonneoplastic Lesion Atlas

### *Tooth, Ameloblast – Metaplasia, Squamous*

characterized by loss of the columnar layer of ameloblasts and replacement by squamous epithelium (Figure 2 and Figure 4, arrows).

**Recommendation:** Squamous metaplasia of the ameloblasts should be diagnosed and graded whenever present. Severity grading for squamous metaplasia is based on the extent of the lesion and the number of layers of squamous cells in the lesion.

#### **References:**

Brown HR, Hardisty JF. 1990. Oral cavity, esophagus and stomach. In: Pathology of the Fischer Rat (Boorman GA, Montgomery CA, MacKenzie WF, eds). Academic Press, San Diego, CA, 9-30.

Abstract: <http://www.ncbi.nlm.nih.gov/nlmcatalog/9002563>

Fletcher AM, Bregman CL, Woicke J, Salcedo TW, Zidell RH, Janke HE, Fang H, Janusz WJ, Schlze GE, Mense MG. 2010. Incisor degeneration in rats induced by vascular endothelial growth factor/fibroblast growth factor receptor tyrosine kinase inhibition. Toxicol Pathol 38:267-279.

Abstract: <http://www.ncbi.nlm.nih.gov/pubmed/20100840>

National Toxicology Program. 1996. NTP TR-393. Toxicology and Carcinogenesis Studies of Sodium Fluoride (CAS No. 7681-49-4) in F344/N Rats and B6C3F1 Mice (Drinking Water Studies). NTP, Research Triangle Park, NC.

Abstract: <http://ntp.niehs.nih.gov/go/12237>

#### **Authors:**

Linda H. Kooistra, DVM, PhD, DACVP  
Pathologist

Charles River Laboratories, Inc.  
Research Triangle Park, NC

Abraham Nyska, DVM, Diplomate ECVP, Fellow IATP  
Expert in Toxicologic Pathology  
Visiting Full Professor of Pathology  
Sackler School of Medicine, Tel Aviv University  
Timrat Israel