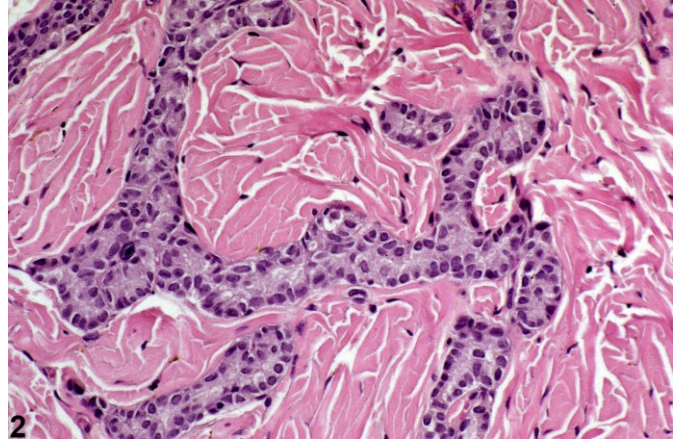
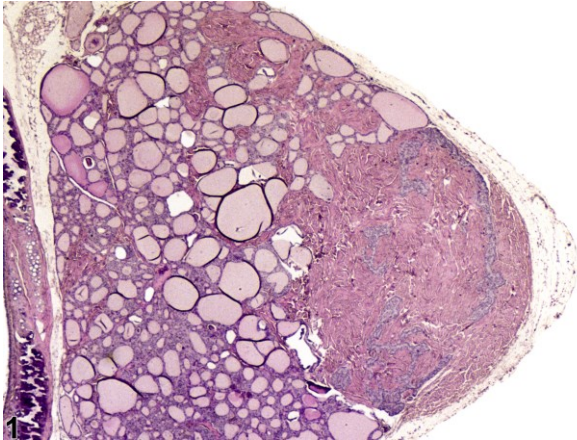


# NTP Nonneoplastic Lesion Atlas

## *Parathyroid Gland – Fibrosis*



**Figure Legend:** **Figure 1** Parathyroid Gland - Fibrosis in a female F344/N rat from a chronic study. Extensive fibrosis has replaced the parathyroid parenchyma and extended into the thyroid. **Figure 2** Parathyroid Gland - Fibrosis in a female F344/N rat from a chronic study. Higher magnification of Figure 1 showing mature collagen surrounding remaining compressed chords of parathyroid parenchymal cells.

**Comment:** Parathyroid fibrosis is characterized by fibrillar, eosinophilic material that expands the interstitium of the parathyroid gland and, when severe, replaces the parenchyma. It is a rarely seen change. There may be extension into the adjacent thyroid parenchyma. The significance of this lesion is uncertain.

**Recommendation:** Rare lesions such as this should be diagnosed and given a severity grade.

### **Authors:**

Robert R. Maronpot, DVM, MS, MPH, DACVP, DABT, FIATP  
Senior Pathologist  
Experimental Pathology Laboratories, Inc.  
Research Triangle Park, NC

Georgette D. Hill, DVM, PhD  
Toxicologic Pathologist/Assistant Pathology Program Manager  
Integrated Laboratory Systems, Inc.  
Research Triangle Park, NC