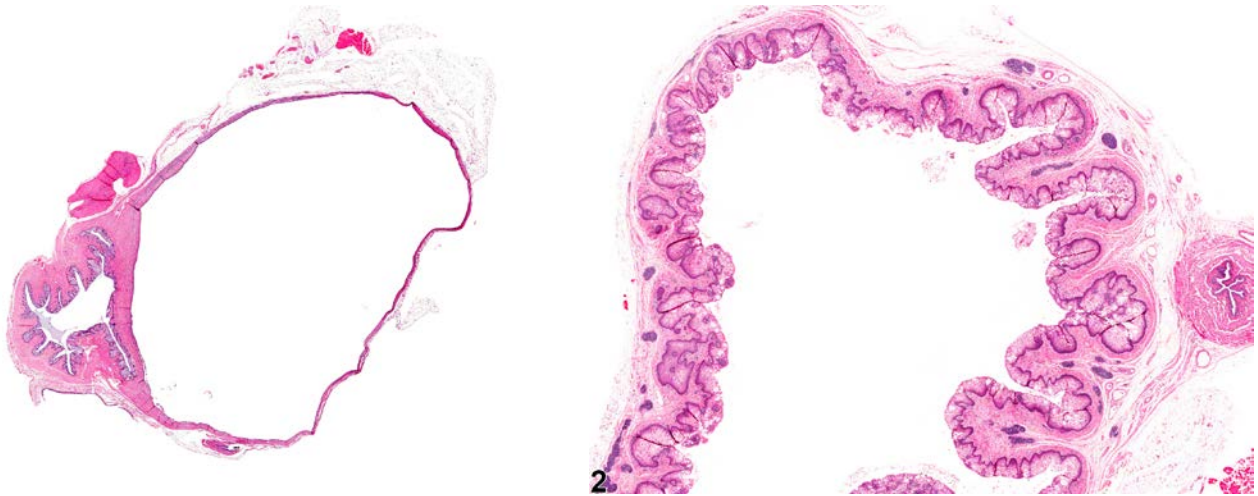


NTP Nonneoplastic Lesion Atlas

Vagina – Dilation



1

2

Figure Legend: **Figure 1** Vagina - Dilation in a female F344/N rat from a chronic study. There is dilation of the vagina. **Figure 2** Vagina - Dilation, Marked, in a female F344/N rat from a chronic study. There is marked dilation of the vagina.

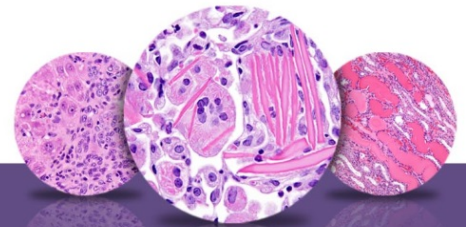
Comment: Dilation of the vagina (Figure 1 and Figure 2) usually occurs secondary to an imperforate vagina. An endodermal membrane normally occludes the vagina in the pup, and this typically disappears at puberty and the vagina becomes patent. When this does not happen, the consequence is cystic dilation of the vagina. This dilation may also be associated with mucometra, inflammation, and hyperplasia of the epithelium.

Recommendation: Vagina - Dilatation should be diagnosed and graded when the cause of the dilation is not apparent on the slide. However, if the vagina is imperforate, and this is apparent on the slide, then the diagnosis of imperforate vagina should be made. Secondary lesions, such as inflammation, should not be diagnosed separately unless warranted by severity.

References:

Ginty I, Hoogstraten-Miller S. 2008. Perineal swelling in a mouse. *Lab Anim (NY)* 37:196-199.
Full Text: <http://www.ncbi.nlm.nih.gov/pmc/articles/PMC2597298/>

Greaves P. 2012. Female genital tract. In: *Histopathology of Preclinical Toxicity Studies: Interpretation and Relevance in Drug Safety Evaluations*, 4th ed. Elsevier, Amsterdam, 667-724.



NTP Nonneoplastic Lesion Atlas

Vagina – Dilation

References:

National Toxicology Program. 1992. NTP TR-388. Toxicology and Carcinogenesis Studies of Ethylene Thiourea (CAS: 96-45-7) in F344 Rats and B6C3F₁ Mice (Feed Studies). NTP, Research Triangle Park, NC.

Abstract: <http://ntp.niehs.nih.gov/go/12227>

National Toxicology Program. 2003. NTP TR-505. Toxicology and Carcinogenesis Studies of Citral (Microencapsulated) (CAS No. 5392-40-5) in F344/N Rats and B6C3F₁ Mice (Feed Studies). NTP, Research Triangle Park, NC.

Abstract: <http://ntp.niehs.nih.gov/go/14888>

Authors:

Gabrielle Willson, BVMS, DipRCPATH, FRCPath, MRCVS
Senior Pathologist
Experimental Pathology Laboratories, Inc.
Research Triangle Park, NC

Karen Y. Cimon, DVM, MS
Senior Pathologist
Experimental Pathology Laboratories, Inc.
Research Triangle Park, NC