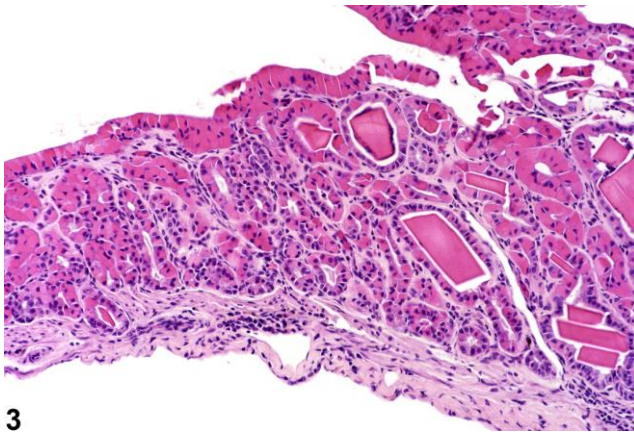
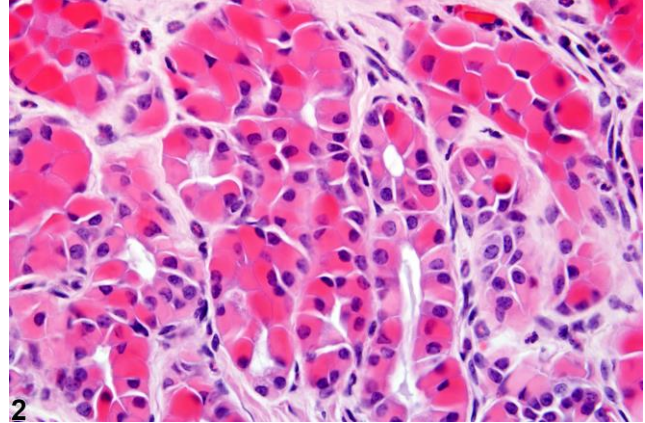
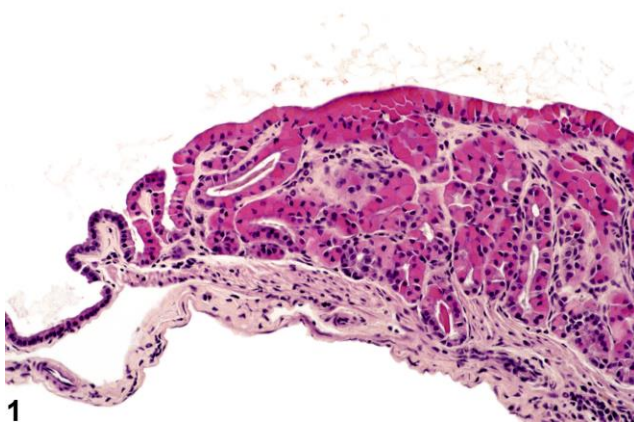


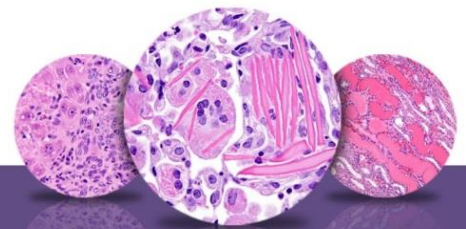
# NTP Nonneoplastic Lesion Atlas

## Gallbladder – Hyaline droplet accumulation



**Figure Legend:** **Figure 1** Hyaline droplet accumulation in the gallbladder in a male B6C3F1 mouse from a chronic study. **Figure 2** Hyaline droplet accumulation in the gallbladder in a male B6C3F1 mouse from a chronic study (higher magnification of Figure 1). **Figure 3** Hyaline droplet accumulation with extracellular crystalline material in the gallbladder in a male B6C3F1 mouse from a chronic study.

**Comment:** Cytoplasmic inclusions of homogeneous eosinophilic hyaline-like material may be seen in older mice in intrahepatic biliary epithelial cells, as well as epithelial cells in the gallbladder (Figure 1, Figure 2, and Figure 3). In marked cases, there is hyperplasia of the glandular epithelium, and crystalline forms of the eosinophilic inclusion material may be present both intracellularly and extracellularly. The hyaline material has been identified as a chitinase-like protein of unknown function.



# NTP Nonneoplastic Lesion Atlas

## *Gallbladder – Hyaline droplet accumulation*

**Recommendation:** Hyaline droplet accumulation should be diagnosed and given a severity grade, and salient features should be described in the pathology narrative. Associated lesions, such as inflammation or epithelial cell degeneration, necrosis, or hyperplasia, should be diagnosed separately if sufficiently prominent.

### References:

Harada T, Enomoto A, Boorman GA, Maronpot RR. 1999. Liver and gallbladder. In: Pathology of the Mouse: Reference and Atlas (Maronpot RR, Boorman GA, Gaul BW, eds). Cache River Press, Vienna, IL, 119–183.

Abstract: <http://www.cacheriverpress.com/books/pathmouse.htm>

Hsu L, Diwan B, Ward JM, Noguchi CT. 2006. Pathology of “Berkeley” sickle-cell mice includes gallstones, priapism. *Blood* 107:3414–3415.

Abstract: <http://www.ncbi.nlm.nih.gov/pubmed/16597602>

Thoolen B, Maronpot RR, Harada T, Nyska A, Rousseaux C, Nolte T, Malarkey D, Kaufmann W, Kutter K, Deschl U, Nakae D, Gregson R, Winlove M, Brix A, Singl B, Belpoggi F, Ward JM. 2010. Hepatobiliary lesion nomenclature and diagnostic criteria for lesions in rats and mice (INHAND). *Toxicol Pathol* 38:5S–81S.

Full-Text: [http://tpx.sagepub.com/content/38/7\\_suppl/5S.full](http://tpx.sagepub.com/content/38/7_suppl/5S.full)

Ward JM, Yoon M, Anver MR, Haines DC, Kudo G, Gonzalez FJ, Kimura S. 2001. Hyalinosis and Ym1/Ym2 gene expression in the stomach and respiratory tract of 129S4/SvJae and wild-type and CYP1A2-null B6, 129 mice. *Am J Pathol* 158:323–332.

Abstract: <http://www.ncbi.nlm.nih.gov/pubmed/11141507>

Yang YH, Campbell JS. 1964. Crystalline excrements in bronchitis and cholecystitis of mice. *Am J Pathol* 45:337–345.

Abstract: <http://www.ncbi.nlm.nih.gov/pmc/articles/PMC1907179/>

### Author:

Robert R. Maronpot, DVM, MS, MPH, DACVP, DABT, FIATP  
Senior Pathologist  
Experimental Pathology Laboratories, Inc.  
Research Triangle Park, NC