

NTP Nonneoplastic Lesion Atlas

Liver – Hepatodiaphragmatic nodule

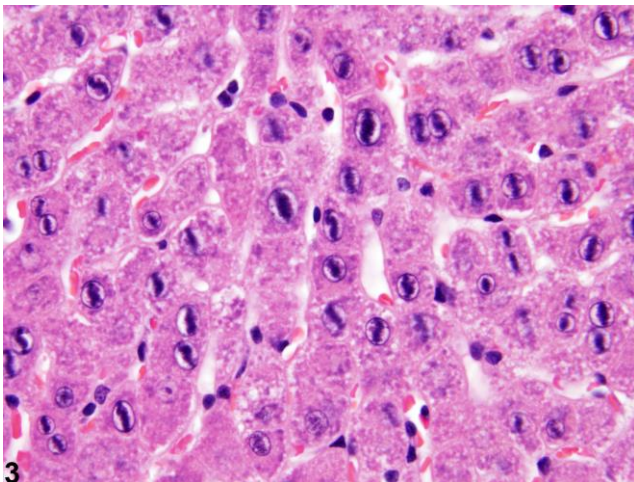
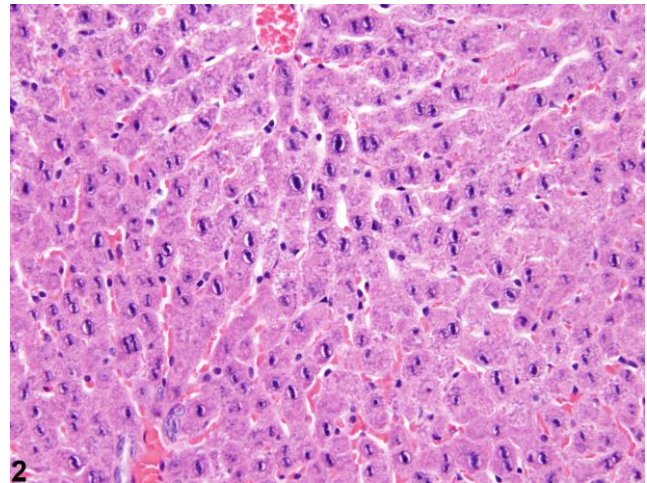
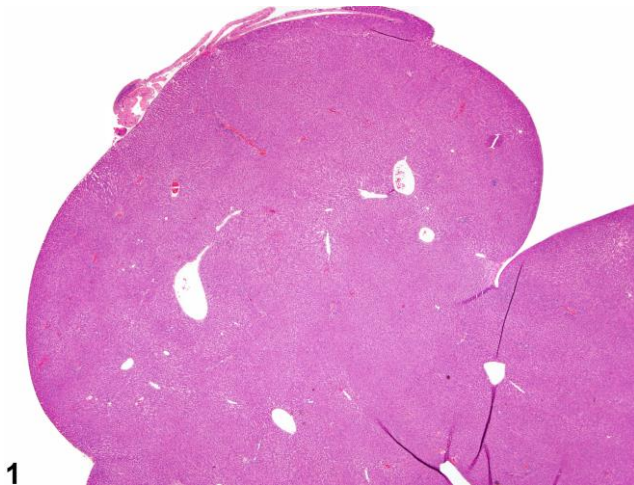
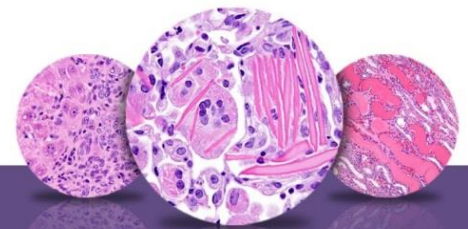


Figure Legend: **Figure 1** Hepatodiaphragmatic nodule in a female F344/N rat from a subchronic study. **Figure 2** Hepatodiaphragmatic nodule in a female F344/N rat from a subchronic study. Note the linear chromatin arrangement in the nuclei. **Figure 3** Hepatodiaphragmatic nodule in a female F344/N rat from a subchronic study. Note the linear chromatin arrangement in the nuclei (higher magnification of Figure 2).

Comment: Protrusion of a portion of the median lobe into the diaphragm represents a congenital lesion in rats of any age and is occasionally seen in mice. This anomaly involves



NTP Nonneoplastic Lesion Atlas

Liver – Hepatodiaphragmatic nodule

both the liver and the diaphragm. The protrusion of the liver does not penetrate the diaphragm but is covered by the thin fibrous tendon of the diaphragm. These nodules typically are not well demarcated and have normal hepatic architecture (Figure 1). Hepatocyte nuclei within the nodule may contain linear chromatin arrangements resembling nuclear profiles seen in Anitschkow myocytes (Figure 2 and Figure 3).

Recommendation: Although this is a background lesion that occurs sporadically and is not affected by treatment, it is a congenital lesion and should be diagnosed whenever present. These lesions should not be graded.

References:

Eustis SL, Boorman GA, Harada T, Popp JA. 1990. Liver. In: Pathology of the Fischer Rat (Boorman GA, Eustis SL, Elwell MR, Montgomery CA, MacKenzie WF, eds). Academic Press, San Diego, 71–94.

Abstract: <http://www.ncbi.nlm.nih.gov/nlmcatalog/9002563>

National Toxicology Program. 1982. NTP TR-228. Carcinogenesis Bioassay of Vinylidene Chloride (CAS No. 75-35-4) in F344/N Rats and B6C3F₁/N Mice (Gavage Study). NTP, Research Triangle Park, NC.

Full-Text: http://ntp.niehs.nih.gov/ntp/htdocs/LT_rpts/tr228.pdf

Thoolen B, Maronpot RR, Harada T, Nyska A, Rousseaux C, Nolte T, Malarkey D, Kaufmann W, Kutter K, Deschl U, Nakae D, Gregson R, Winlove M, Brix A, Singl B, Belpoggi F, Ward JM. 2010. Hepatobiliary lesion nomenclature and diagnostic criteria for lesions in rats and mice (INHAND). *Toxicol Pathol* 38:5S–81S.

Full-Text: http://tpx.sagepub.com/content/38/7_suppl/5S.full

Author:

Robert R. Maronpot, DVM, MS, MPH, DACVP, DABT, FIATP
Senior Pathologist
Experimental Pathology Laboratories, Inc.
Research Triangle Park, NC