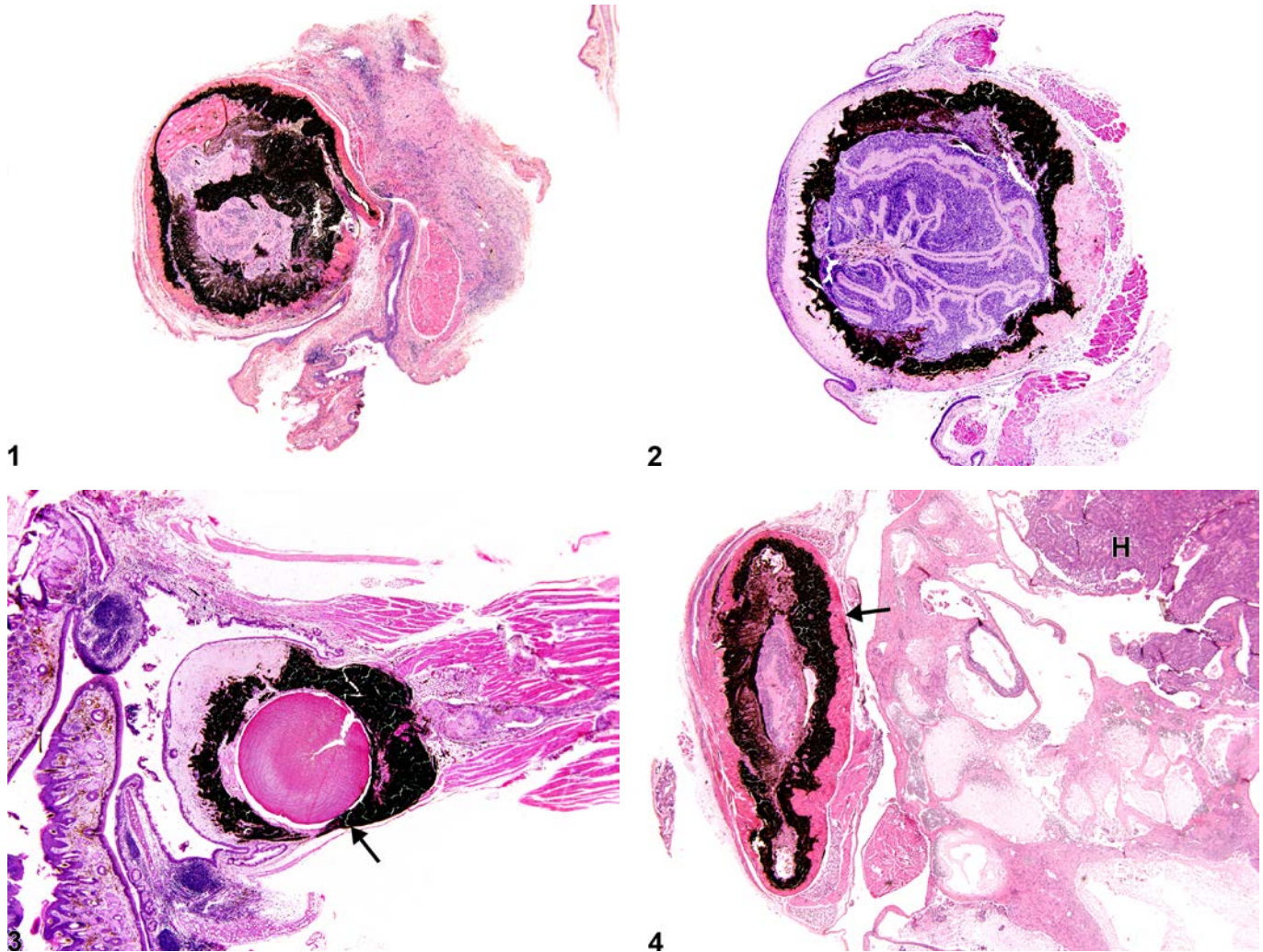


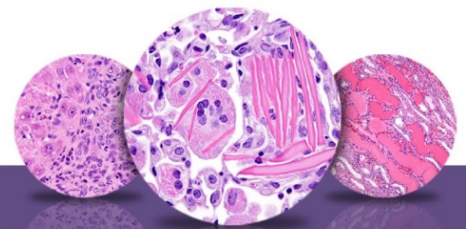


# NTP Nonneoplastic Lesion Atlas

## Eye – Phthisis Bulbi



**Figure Legend:** **Figure 1** Eye - Phthisis bulbi in a female B6C3F1 mouse from a chronic study. Phthisis bulbi (“end-stage” eye) is characterized by prominent shrinkage of the globe with marked structural displacement and disorganization. **Figure 2** Eye - Phthisis bulbi in a female B6C3F1 mouse from a chronic study. The globe is shrunken with marked structural displacement and disorganization. **Figure 3** Eye - Phthisis bulbi in a female B6C3F1 mouse from a chronic study. There is marked shrinkage of the globe (arrow) with marked structural displacement and disorganization. **Figure 4** Eye - Phthisis bulbi in a female B6C3F1 mouse from a lifetime study. The globe is shrunken (arrow) with marked structural displacement and disorganization and compressed by a large Harderian gland carcinoma (H).



# NTP Nonneoplastic Lesion Atlas

## Eye – Phthisis Bulbi

**Comment:** Phthisis bulbi (Figure 1, Figure 2, Figure 3, and Figure 4) is the diagnostic term used for the “end-stage” eye morphology resulting from severe injury from various causes, such as trauma, inflammation, excess exposure to ionizing radiation or ambient light, or physical compression by space-occupying orbital masses, such as neoplasms of the Harderian gland (Figure 4). Phthisis bulbi is characterized by prominent shrinkage of the globe with marked displacement and disorganization of ocular structures.

**Recommendation:** Phthisis bulbi should be diagnosed as present without assignment of a severity grade. Changes in the various ocular subtopographies should not be diagnosed separately as they are included in the collective diagnostic term “phthisis bulbi.” If an inciting cause (e.g., a foreign body) is present, it should be diagnosed separately, and the association between the two lesions should be described in the narrative.

### References:

Frame SR, Slone TW. 1966. Nonneoplastic and neoplastic changes in the eye. In: Pathobiology of the Aging Mouse, Vol 2 (Mohr U, Dungworth DL, Capen CC, Carlton WW, Sundberg JP, Ward JM, eds). ILSI Press, Washington, DC, 97-103.

Geiss V, Yoshitomi K. 1991. Eyes. In: Pathology of the Mouse: Reference and Atlas (Maronpot RR, Boorman GA, Gaul BW, eds). Cache River Press, Vienna, IL, 471-489.

Abstract: <http://www.cacheriverpress.com/books/pathmouse.htm>

Hazlett LD, Rosen DD, Berk RS. 1978. Age-related susceptibility to *Pseudomonas aeruginosa* ocular infections in mice. *Infect Immun* 20:25-29.

Full-text: <http://iai.asm.org/content/20/1/25.full.pdf>

Newkirk KM, Chandler HL, Parent AE, Young DC, Colitz CMH, Wilkie DA, Kusewitt DF. 2007. Ultraviolet radiation-induced corneal degeneration in 129 mice. *Toxicol Pathol* 35:817-824.

Full-text: <http://tpx.sagepub.com/content/35/6/817.full>

National Toxicology Program. 1979. NTP TR-189. Bioassay of *p*-Chloroaniline for Possible Carcinogenicity (CAS No. 106-47-8). National Cancer Institute, Bethesda, MD.

Abstract: <http://ntp.niehs.nih.gov/go/10109>

National Toxicology Program. 1989. NTP TR-351. Toxicology and Carcinogenesis Studies of *para*-Chloroaniline Hydrochloride (CAS No. 20265-96-7) in F344/N Rats and B6C3F<sub>1</sub> Mice (Gavage Studies). NTP, Research Triangle Park, NC.

Abstract: <http://ntp.niehs.nih.gov/go/6963>



# NTP Nonneoplastic Lesion Atlas

## Eye – Phthisis Bulbi

### References:

National Toxicology Program. 1992. NTP TR-410. Toxicology and Carcinogenesis Studies of Naphthalene (CAS No. 91-20-3) in B6C3F<sub>1</sub> Mice (Inhalation Studies). NTP, Research Triangle Park, NC.

Abstract: <http://ntp.niehs.nih.gov/go/7700>

National Toxicology Program. 1992. NTP TR-411. Toxicology and Carcinogenesis Studies of C.I. Pigment Red 23 (CAS No. 6471-49-4) in F344 Rats and B6C3F<sub>1</sub> Mice (Feed Studies). NTP, Research Triangle Park, NC.

Abstract: <http://ntp.niehs.nih.gov/go/7702>

Rao GN. 1991. Light intensity-associated eye lesions of Fischer 344 rats in long-term studies. *Toxicol Pathol* 19:148-155.

Abstract: <http://tpx.sagepub.com/content/19/2/148.short>

Takase H, Yu C-R, Ham D-I, Chan C-C, Chen J, Vistica BP, Warousek EF, Durum SK, Egwuagu CE, Gery I. 2006. Inflammatory processes triggered by TCR engagement or by local cytokine expression: Differences in profiles of gene expression and infiltrating cell populations. *J Leukocyte Biol* 80:538-545.

Abstract: <http://www.ncbi.nlm.nih.gov/pubmed/16793919>

Whittum JA, McCulley JP, Niederkorn JY, Streilein JW. 1984. Ocular disease induced in mice by anterior chamber inoculation of herpes simplex virus. *Invest Ophthalmol Vis Sci* 25:1065-1073.

Abstract: <http://www.iovs.org/content/25/9/1065.short>

Yoshitomi K, Boorman GA. 1990. Eye and associated glands. In: *Pathology of the Fischer Rat: Reference and Atlas* (Boorman GA, Eustis SL, Elwell MR, Montgomery CA, MacKenzie WF, eds). Academic Press, San Diego, CA, 239-260.

Abstract: <http://www.cacheriverpress.com/books/pathmouse.htm>

### Author:

Margarita M. Gruebbel, DVM, PhD, DACVP  
Senior Pathologist  
Experimental Pathology Laboratories, Inc.  
Research Triangle Park, NC