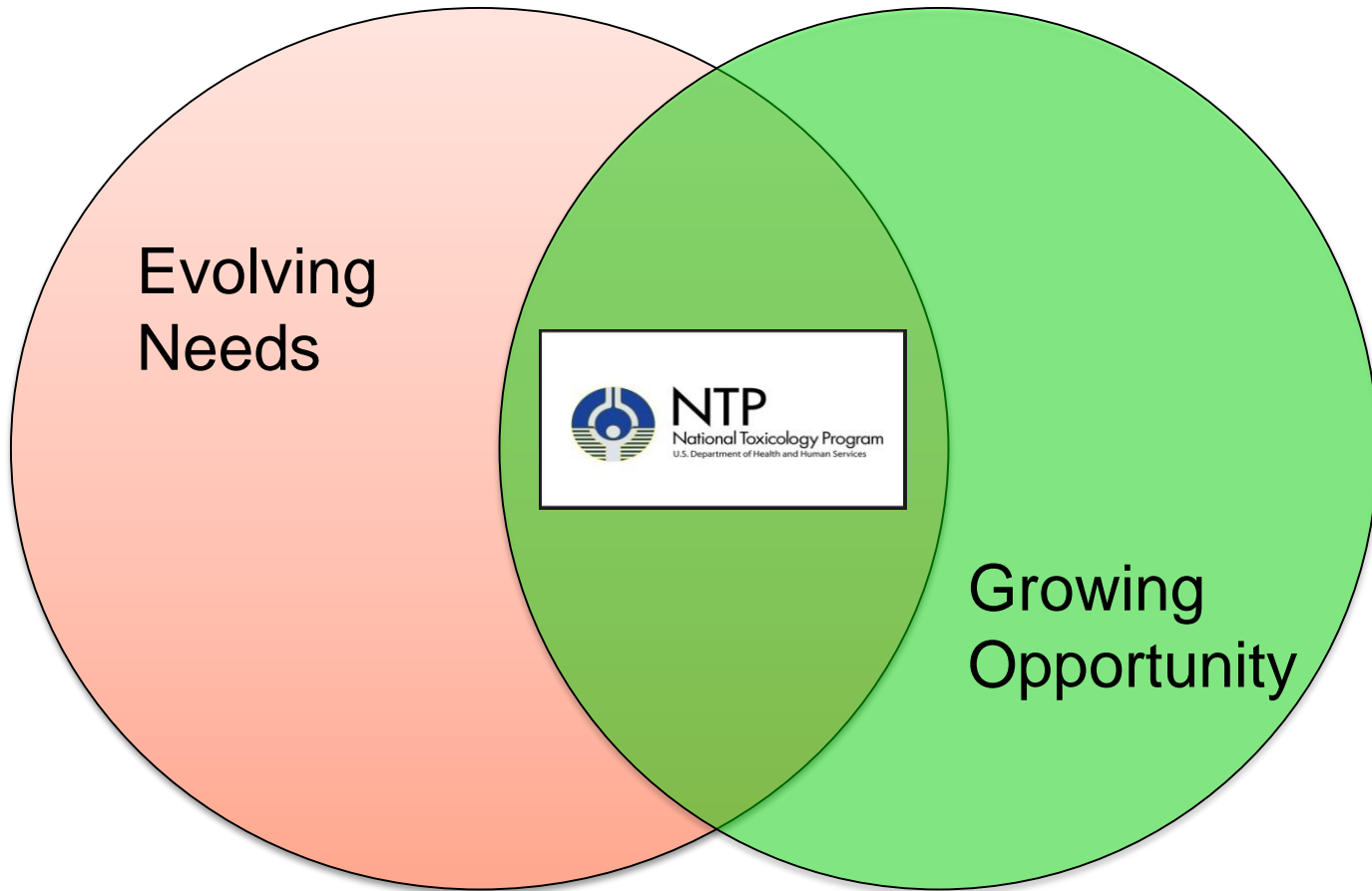
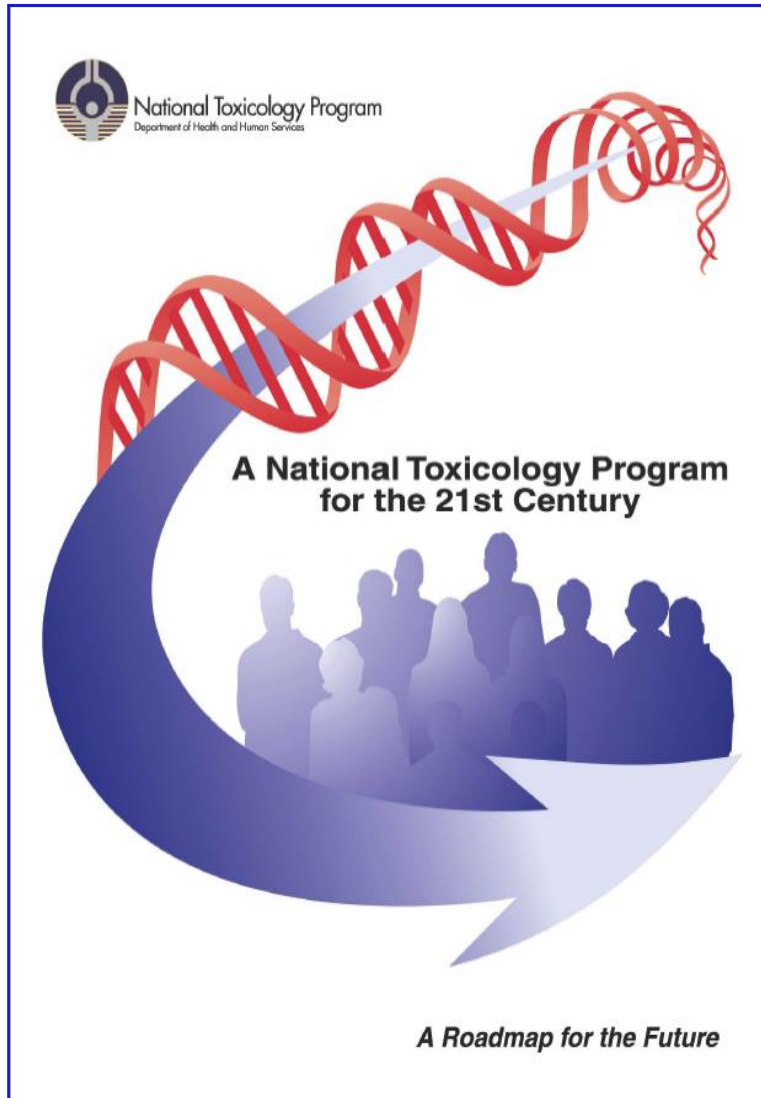


The Changing Toxicology Landscape: Challenges and the Future of Risk Assessment

Brian R. Berridge, DVM, PhD, DACVP
Associate Director, NTP
Scientific Director, DNTP
National Institute of Environmental Health Sciences

NTP Board of Scientific Counselors Meeting
February 15, 2019





21st Century Vision

To support the **evolution of toxicology from a predominately observational science** at the level of disease-specific models **to a predominately predictive science** focused upon a broad inclusion of target-specific, mechanism-based, biological observations.



- We have a need to address a rapidly increasing list of concerns.
- We have a need to respond to a broad stakeholder group with changing expectations.
- We have a need to bring more human relevance and individual precision to our hazard characterizations.
- We have a need to build confidence in a different approach to assessing hazards.
- We have a need to decrease our dependence on animals as a primary modeling platform.



- Aspiration
- Advances in technology
 - Machine learning/Artificial intelligence
 - iPSC
 - Complex in vitro microphysiological systems
 - Computer vision and holistic physiologic monitoring in animal studies
 - Biomonitoring patients/people
- Willingness to innovate
- An ability to leverage our experiences
 - NTP
 - Tox21



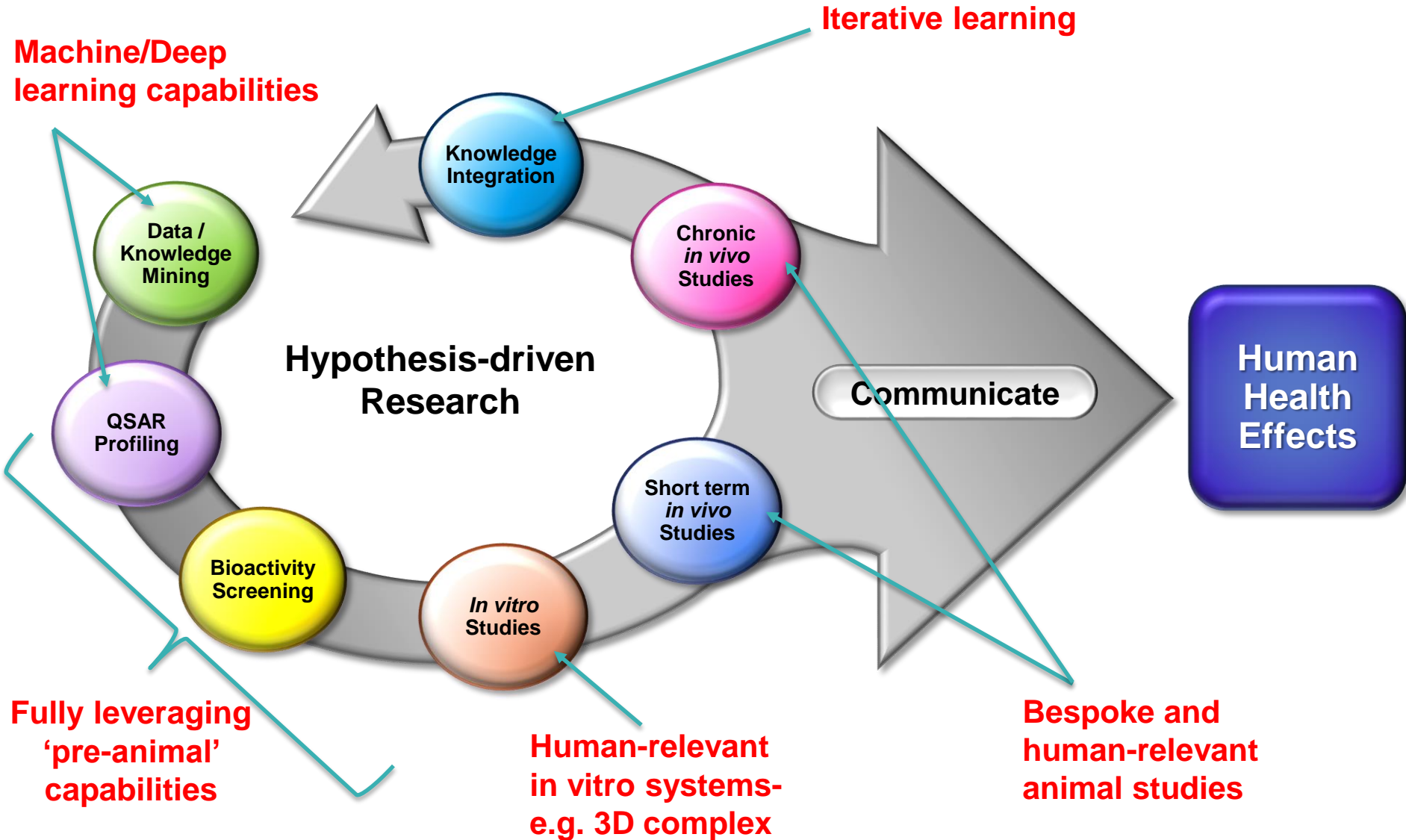
- What is NTP's unique value?
 - Ability to focus on complex challenges for prolonged periods of time
 - Impactful science supporting policy and regulation
 - Opportunity to address chronic health effects
 - Build predictive capabilities
- What does it mean to be human-relevant?
 - Studying things of contemporary human concern/importance
 - Studying things in a relevant human context
 - Modeling human exposure context- quantity, route
 - Demonstrating exposure/outcomes relationships
 - Addressing public confusion



- How do we build confidence in non-traditional evidence?
 - Demonstrating human relevance
 - Understanding mechanisms
 - Toxicologists and pathologists working together



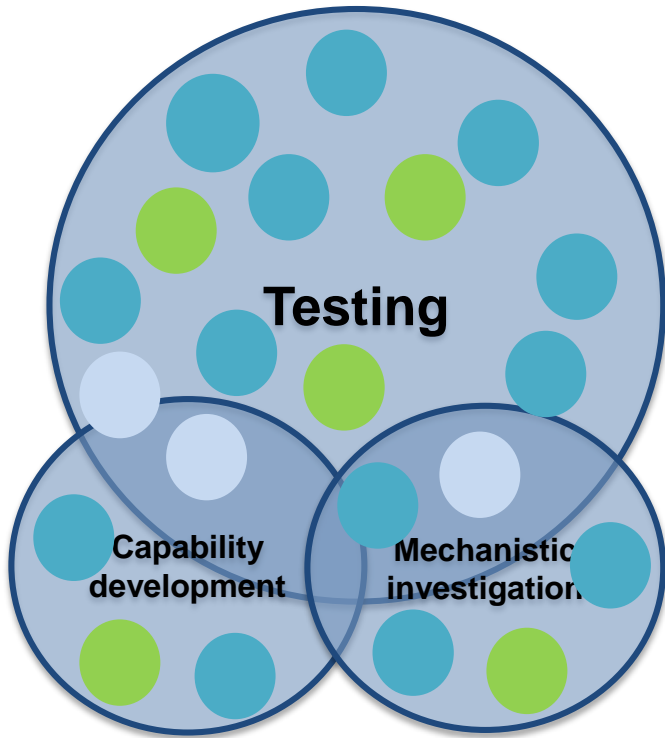
Innovating the Paradigm






Evolving Our Portfolio

Agents/Projects



Programs



-  Studies
-  Projects
-  Programs

Goals

- Increase impact
- Improve sustainability
- Increase visibility
- Improve complementarity



- Carcinogenicity Testing for the 21st Century
- Developmental Neurotoxicity Modeling
- Cardiovascular Hazard Assessment in Environmental Toxicology

Aims

- Fill a gap in current capabilities
- Build on existing effort
- Align to NIH model
- Leverage our key strengths and value

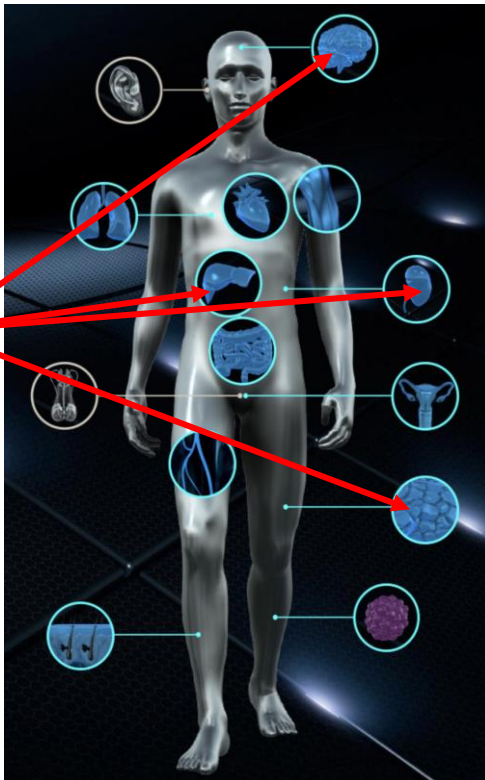


Fundamental Shift

X lbs./yr. commercial production



Agent Y



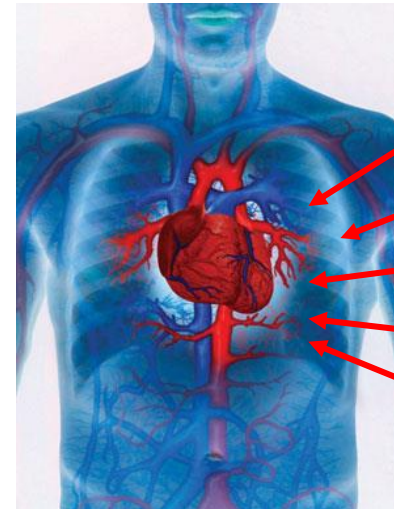
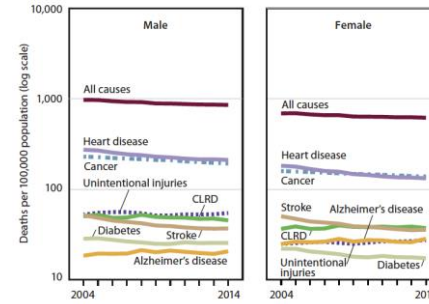
<https://ncats.nih.gov/tissuechip/chip>



Mortality

Selected Causes of Death

Figure 2. Age-adjusted death rates for selected causes of death for all ages, by sex: United States, 2004–2014



Agent A

Agent B

Agent C

Agent Y

Agent Z



Human Value for Cancer Testing

- In 2018, an estimated 1,735,350 new cases of cancer will be diagnosed in the United States and 609,640 people will die from the disease.
- Approximately 38.4% of men and women will be diagnosed with cancer at some point during their lifetimes (based on 2013–2015 data).
- In 2017, an estimated 15,270 children and adolescents ages 0 to 19 were diagnosed with cancer and 1,790 died of the disease.
- The number of cancer deaths (cancer mortality) is 163.5 per 100,000 men and women per year (based on 2011–2015 deaths).



Autism Spectrum Disorder

Estimated Autism Prevalence 2018



* Centers for Disease Control and Prevention (CDC) prevalence estimates are for 4 years prior to the report date (e.g. 2018 figures are from 2014)



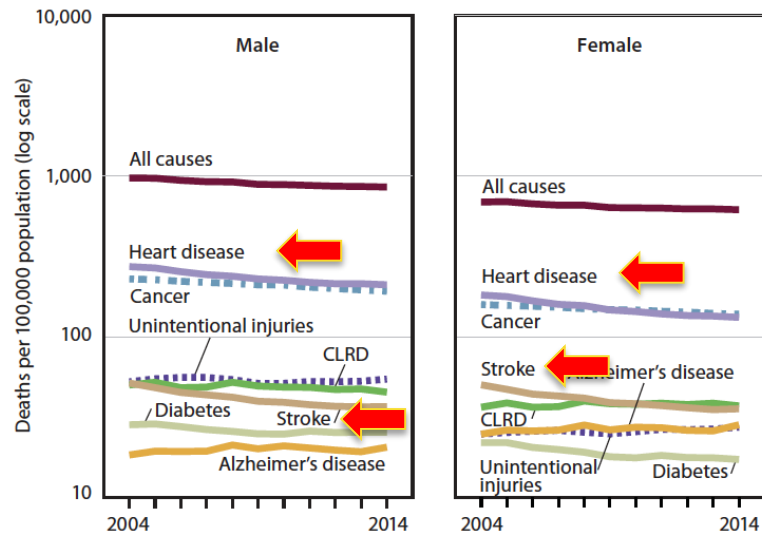


CV Morbidity and Mortality

Mortality

Selected Causes of Death

Figure 2. Age-adjusted death rates for selected causes of death for all ages, by sex: United States, 2004–2014



National Center for Health Statistics. Health, United States, 2015: With Special Feature on Racial and Ethnic Health Disparities. Hyattsville, MD. 2016.

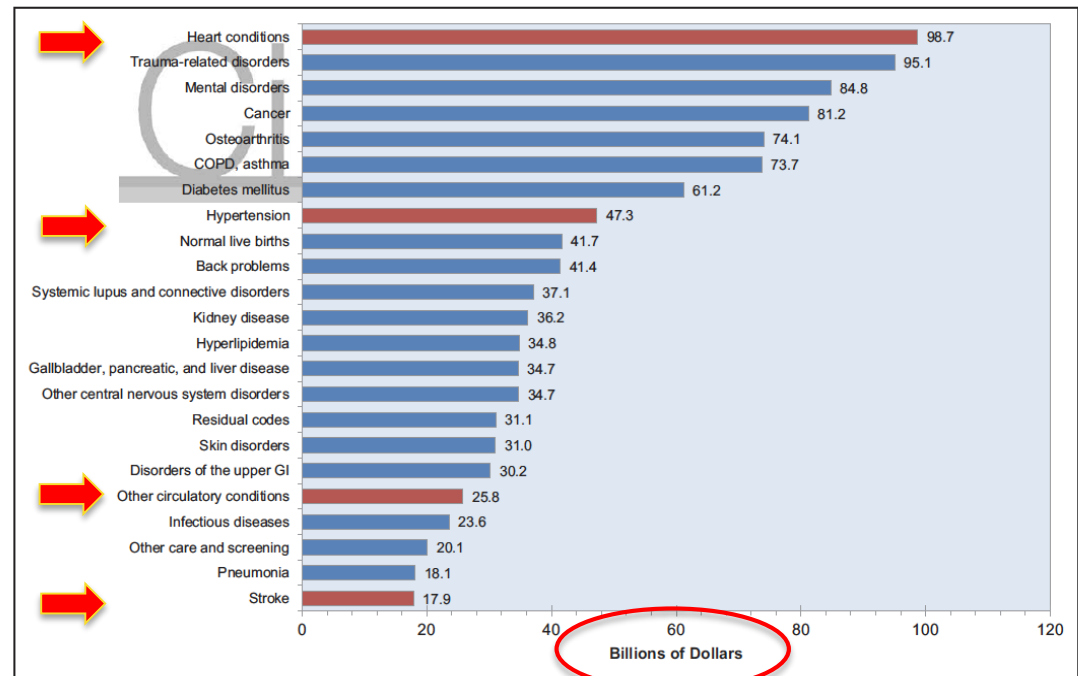


Chart 27-2. The 23 leading diagnoses for direct health expenditures, United States, average annual 2012 to 2013 (in billions of dollars).

COPD indicates chronic obstructive pulmonary disease; and GI, gastrointestinal (tract). Source: National Heart, Lung, and Blood Institute; estimates are from the Medical Expenditure Panel Survey, Agency for Health-care Research and Quality, and exclude nursing home costs.



- Contextualizing hazard
 - How do you make hazards relevant?
 - Where/when does hazard characterization become risk assessment?
- Enabling stakeholders
 - Which stakeholders?
 - Regulatory/Policy
 - Scientific
 - * • Public
 - Industry



The Changing Toxicology Landscape

- How might potential challenges of the future affect the NTP mission?
- How should the NTP position itself to be impactful in the toxicology and risk assessment communities?

Thank You!

