



Agenda

Thursday, August 24

Time	Presentation
8:30 AM	Welcome and Opening Remarks John Bucher <i>NIEHS, NTP</i>
8:40 AM	Uptake of Systematic Review and Meta-Analysis in Toxicology and Public Health Andrew Rooney <i>NIEHS, NTP</i>
Session 1: Systematic Reviews or Meta-Analyses in Toxicology and Public Health Chair: Juleen Lam	
9:00 AM Keynote	Navigating the Science – Opportunities to Improve Health Through Advances in Systematic Reviews Tracey Woodruff <i>University of California, San Francisco</i>
9:45	Implementing the Systematic Review Approach in Non-Clinical Fields: The Importance of Education Rob De Vries <i>SYRCLE</i>
10:00	Systematic Evidence Map of Transgenerational Inheritance of Health Effects Vickie Walker <i>NIEHS, NTP</i>
10:15	Aerobic but Not Resistance Exercise Can Induce Inflammatory Pathways via Toll-like 2 and 4: A Systematic Review Paula Andréa Malveira Cavalcante <i>Federal University of São Paulo (UNIFESP), Brazil</i>
10:30 – 10:45 AM	Break
10:45	Systematic Reviews and Meta-Analysis for Environmental Health: Proof-of-Concept Case Study Examples Juleen Lam <i>University of California, San Francisco</i>
11:00	Ensuring Only High-quality Systematic Reviews Get Published: New Obligations and Strategies for Environmental Health Journals Paul Whaley <i>Lancaster University</i>
11:15	Association Between Exposure to p,p'-DDT and its Metabolite p,p'-DDE With Obesity: Integrated Systematic Review and Meta-Analysis Michele La Merrill <i>University of California, Davis</i>
11:30	Office of the Report on Carcinogens Systematic Review of Cancer Studies in Experimental Animals Gloria Jahnke <i>NIEHS, NTP</i>
11:45	Performing Scoping Studies With SWIFT-Review and SWIFT-Active Screener Brian Howard <i>Sciome</i>
12:00 – 1:15 PM	Lunch



Session 2: Automation of Systematic Reviews

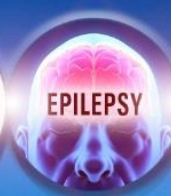
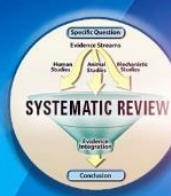
Chair: Andrew Rooney

Time	Presentation
1:15 PM Keynote	Semi-Automating Evidence Synthesis via Machine Learning and Natural Language Processing Byron Wallace <i>Northeastern University</i>
2:00	Systematic Review Facility (SyRF) – A Toolbox for Systematic Review and Meta-Analysis Gillian Currie <i>CAMARADES</i>
2:15	Machine Learning Approaches to Assist the Screening Stage of Pre-Clinical Systematic Reviews Alexandra Bannach-Brown <i>University of Edinburgh, Aarhus University</i>
2:30	SWIFT-Active Screener: Reducing Literature Screening Effort Through Machine Learning for Systematic Reviews Ruchir Shah <i>Sciome</i>
2:45	The Vision of SLIM – A Systematic Living Information Machine Jing Liao <i>University of Edinburgh</i>
3:00 – 3:15 PM	Break
3:15	Text Mining as a Tool to Aid the Assessment of Reporting of Risk of Bias and Other Methodological Quality Criteria Zsanett Bahor <i>University of Edinburgh</i>
3:30	Applying the Key Characteristics Paradigm in Cancer Hazard Identification Kate Guyton <i>IARC Monographs</i>
3:45	Lessons From the Conduct of Two Systematic Reviews in Risk Assessment: Focus on Collaborative Software Tools Katya Tsaoiun <i>Evidence-based Toxicology Collaboration, Johns Hopkins Bloomberg School of Public Health</i>
4:00	Evaluation of Mechanistic Data Based on Key Characteristics of Carcinogens: Application of a Text Mining Tool and a Quantitative Evaluation Framework Daniele Wikoff <i>ToxStrategies</i>
4:15 PM	General Discussion
4:45 PM	Poster Session/Social
5:45 PM	Adjourn
7:00 PM	Dinner



Friday, August 25

Time	Presentation
8:30 AM	Welcome Back and Opening Remarks Andrew Rooney <i>NIEHS, NTP</i>
Session 3: Systematic Review/Meta-Analysis Methods Development Chair: David Howells	
8:35 AM Keynote	Do's and Don'ts in Meta-Analysis of Animal Study Data Kim Wever <i>SYRCLE</i>
9:20	Impact of Choice of Effect Size and Meta-Analysis Method on Identifying Differences Between Groups of Animal Studies Malcolm Macleod <i>University of Edinburgh</i>
9:35	Lessons Learned From a Systematic Review of Prenatal Exposure to Bisphenol A and Hyperactivity Carol Kwiatkowski <i>The Endocrine Disruption Exchange (TEDX)</i>
9:50	Preferred Reporting Items in Systematic Reviews and Meta-Analysis – In Vivo Animal Research Extension (PRISMA-IVA) Marc Avey <i>ICF</i>
10:05	An Application of the Aggregate Exposure Pathway (AEP) and Adverse Outcome Pathway (AOP) Frameworks to Mechanistically Integrate Data Sources Across Multiple Species Into Cumulative Risk Assessment (CRA) David Hines <i>U.S. Environmental Protection Agency</i>
10:20 – 10:35 AM	Break
10:35	Network Meta-Analysis for Preclinical Studies Emily Sena <i>University of Edinburgh</i>
10:50	Application of SR to Fit-For-Purpose Evaluation of Tox21 Assays Robert Wright <i>Johns Hopkins University</i>
11:05	Protocol Registration for Systematic Reviews of Animal Studies Relevant for Human Health in PROSPERO Marc Avey <i>ICF</i>
11:20	Identification of Key Characteristics of Male Reproductive Toxicants as an Approach for Screening and Sorting Mechanistic Evidence Xabier Arzuaga <i>U.S. Environmental Protection Agency</i>
11:35	Meta-Analysis of Animal Studies in Environmental Health: Challenges, Opportunities, and Lessons Learned From Evaluating Evidence From Endocrine Active Chemicals Weihsueh Chiu <i>Texas A&M University</i>



Session 4: New/Late Breaking Systematic Reviews or Meta-Analyses

Chair: Rob De Vries

Time

Presentation

- | | |
|-------|--|
| 11:50 | MVA85A TB Vaccine: Synthesis of Animal Studies Raised Fundamental Questions
Paul Garner <i>Centre for Evidence Synthesis in Global Health, Liverpool School of Tropical Medicine</i> |
| 12:05 | A Perfect Storm of Bias – The Use and Misuse of Observational Scoring in Animal Studies Exemplified by the Rat Grimace Scale
Otto Kalliokoski <i>University of Copenhagen</i> |
| 12:20 | How Authors of Biomedical Research Describe the Design Aspects of the Study and Implications for Variance Estimation and Automation of Reviews
Annette O'Connor <i>Iowa State University</i> |

12:35 – 1:45 PM

Lunch

Session 5: Systematic Reviews or Meta-Analyses in Epilepsy and Other Human Diseases

Chair: Emily Sena

- | | |
|-----------------|--|
| 1:45 PM Keynote | Identification and Characterization of Outcome Measures Reported in Animal Models of Chronic Epilepsy
Michele Simonato <i>University of Ferrara</i> |
| 2:30 | Why Be Systematic – Preclinical Stroke as an Exemplar
David Howells <i>University of Tasmania, Australia</i> |
| 2:45 | Systematic Evidence Mapping of Chemical Exposures and Parkinson's Disease to Support Future Research
Ana Antonic <i>University of Melbourne, Melbourne School of Engineering</i> |
| 3:00 | Language Inclusion and Search Approaches in “Systematic” Reviews of Animal Toxicity and Communicable Disease Studies
Kristine Alpi <i>North Carolina State University</i> |
| 3:15 PM | General Discussion |
| 3:45 PM | Closing Remarks |
| 4:00 PM | Adjourn |